

## Dynein LC 2 Polyclonal Antibody

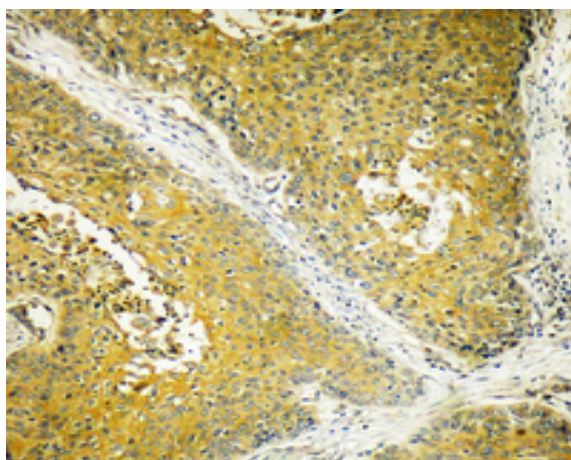
<b>Catalog No :</b>	YT1432
<b>Reactivity :</b>	Human;Mouse;Rat
<b>Applications :</b>	IHC;IF;ELISA
<b>Target :</b>	Dynein LC 2
<b>Fields :</b>	>>Vasopressin-regulated water reabsorption;>>Salmonella infection
<b>Gene Name :</b>	DYNLL2
<b>Protein Name :</b>	Dynein light chain 2 cytoplasmic
<b>Human Gene Id :</b>	140735
<b>Human Swiss Prot No :</b>	Q96FJ2
<b>Mouse Gene Id :</b>	68097
<b>Mouse Swiss Prot No :</b>	Q9D0M5
<b>Rat Gene Id :</b>	140734
<b>Rat Swiss Prot No :</b>	Q78P75
<b>Immunogen :</b>	The antiserum was produced against synthesized peptide derived from human DYNLL2. AA range:1-50
<b>Specificity :</b>	Dynein LC 2 Polyclonal Antibody detects endogenous levels of Dynein LC 2 protein.
<b>Formulation :</b>	Liquid in PBS containing 50% glycerol, 0.5% BSA and 0.02% sodium azide.
<b>Source :</b>	Polyclonal, Rabbit,IgG
<b>Dilution :</b>	IHC 1:100 - 1:300. ELISA: 1:40000.. IF 1:50-200

---

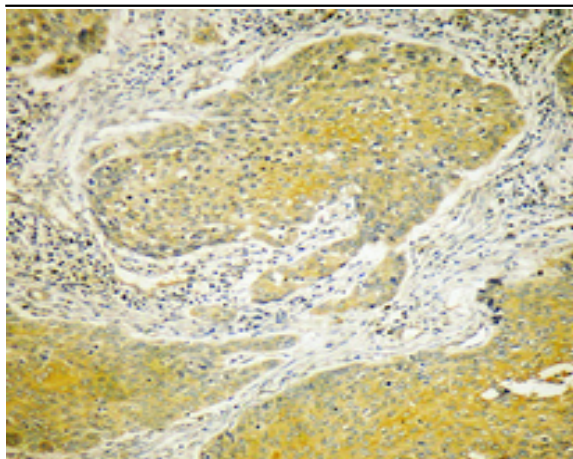
<b>Purification :</b>	The antibody was affinity-purified from rabbit antiserum by affinity-chromatography using epitope-specific immunogen.
<b>Concentration :</b>	1 mg/ml
<b>Storage Stability :</b>	-15°C to -25°C/1 year(Do not lower than -25°C)
<b>Molecularweight :</b>	10kD
<b>Background :</b>	function:May be involved in some aspects of dynein-related intracellular transport and motility. May play a role in changing or maintaining the spatial distribution of cytoskeletal structures.,similarity:Belongs to the dynein light chain family.,subunit:Homodimer. Interacts with BMF. Component of the myosin V motor complex as well as the microtubular dynein motor complex. Interacts with rabies virus phosphoprotein.,
<b>Function :</b>	function:May be involved in some aspects of dynein-related intracellular transport and motility. May play a role in changing or maintaining the spatial distribution of cytoskeletal structures.,similarity:Belongs to the dynein light chain family.,subunit:Homodimer. Interacts with BMF. Component of the myosin V motor complex as well as the microtubular dynein motor complex. Interacts with rabies virus phosphoprotein.,
<b>Subcellular Location :</b>	Cytoplasm, cytoskeleton .
<b>Expression :</b>	Lung,

---

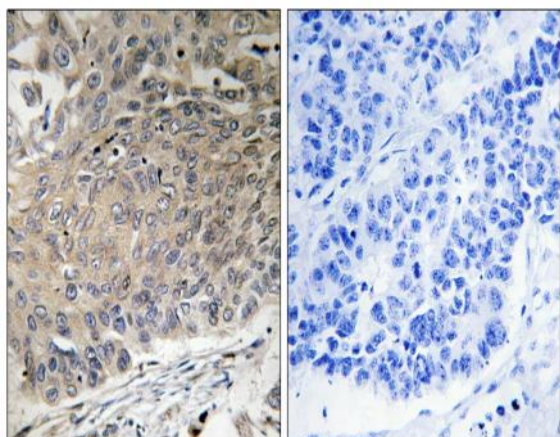
## Products Images



Immunohistochemical analysis of paraffin-embedded Human breast cancer. Antibody was diluted at 1:100(4° overnight). High-pressure and temperature Tris-EDTA,pH8.0 was used for antigen retrieval.



Immunohistochemical analysis of paraffin-embedded Human breast cancer. Antibody was diluted at 1:100(4° overnight). High-pressure and temperature Tris-EDTA,pH8.0 was used for antigen retrieval.



Immunohistochemistry analysis of paraffin-embedded human lung carcinoma tissue, using DYNLL2 Antibody. The picture on the right is blocked with the synthesized peptide.