

## Dynein LC 1 Polyclonal Antibody

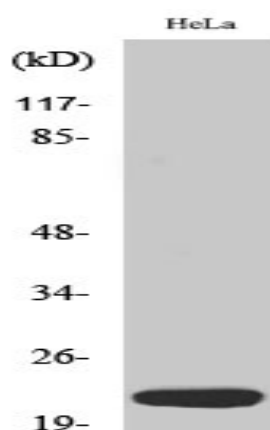
<b>Catalog No :</b>	YT1431
<b>Reactivity :</b>	Human;Mouse
<b>Applications :</b>	WB;IHC;IF;ELISA
<b>Target :</b>	Dynein LC 1
<b>Fields :</b>	>>Amyotrophic lateral sclerosis;>>Huntington disease;>>Pathways of neurodegeneration - multiple diseases
<b>Gene Name :</b>	DNAL1
<b>Protein Name :</b>	Dynein light chain 1 axonemal
<b>Human Gene Id :</b>	83544
<b>Human Swiss Prot No :</b>	Q4LDG9
<b>Mouse Gene Id :</b>	105000
<b>Mouse Swiss Prot No :</b>	Q05A62
<b>Immunogen :</b>	The antiserum was produced against synthesized peptide derived from human DNAL1. AA range:121-170
<b>Specificity :</b>	Dynein LC 1 Polyclonal Antibody detects endogenous levels of Dynein LC 1 protein.
<b>Formulation :</b>	Liquid in PBS containing 50% glycerol, 0.5% BSA and 0.02% sodium azide.
<b>Source :</b>	Polyclonal, Rabbit,IgG
<b>Dilution :</b>	WB 1:500 - 1:2000. IHC 1:100 - 1:300. ELISA: 1:40000.. IF 1:50-200
<b>Purification :</b>	The antibody was affinity-purified from rabbit antiserum by affinity-chromatography using epitope-specific immunogen.

---

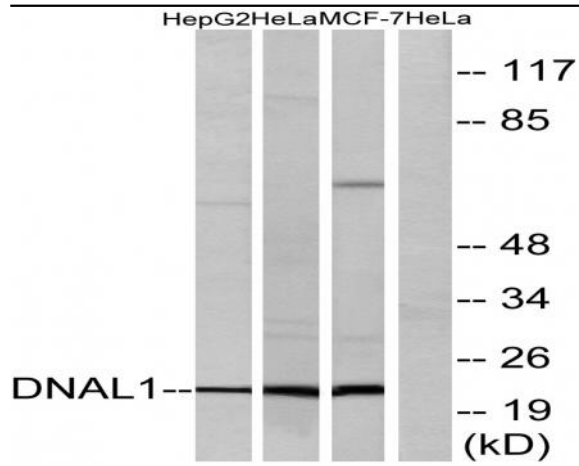
<b>Concentration :</b>	1 mg/ml
<b>Storage Stability :</b>	-15°C to -25°C/1 year(Do not lower than -25°C)
<b>Observed Band :</b>	22kD
<b>Cell Pathway :</b>	Huntington's disease;
<b>Background :</b>	This gene encodes an axonemal dynein light chain which functions as a component of the outer dynein arms complex. This complex acts as the molecular motor that provides the force to move cilia in an ATP-dependent manner. The encoded protein is expressed in tissues with motile cilia or flagella and may be involved in the movement of sperm flagella. Alternate splicing results in multiple transcript variants.[provided by RefSeq, Jan 2011],
<b>Function :</b>	similarity:Belongs to the dynein light chain LC1-type family.,similarity:Contains 4 LRR (leucine-rich) repeats.,subunit:Interacts with DNAH5.,tissue specificity:Expressed in tissues carrying motile cilia such as testis.,
<b>Subcellular Location :</b>	Cytoplasm, cytoskeleton, cilium axoneme .
<b>Expression :</b>	Expressed in tissues carrying motile cilia such as respiratory epithelia, ependyma and testis.

---

## Products Images



Western Blot analysis of various cells using Dynein LC 1 Polyclonal Antibody diluted at 1:500



Western blot analysis of lysates from HeLa, HepG2, and MCF-7 cells, using DNAL1 Antibody. The lane on the right is blocked with the synthesized peptide.