

FKBPL Polyclonal Antibody

| | |
|------------------------------|---|
| Catalog No : | YT1714 |
| Reactivity : | Human;Mouse;Rat |
| Applications : | WB;IHC;IF;ELISA |
| Target : | FKBPL |
| Gene Name : | FKBPL |
| Protein Name : | FK506-binding protein-like |
| Human Gene Id : | 63943 |
| Human Swiss Prot No : | Q9UIM3 |
| Mouse Gene Id : | 56299 |
| Mouse Swiss Prot No : | O35450 |
| Rat Gene Id : | 406168 |
| Rat Swiss Prot No : | Q6MG81 |
| Immunogen : | The antiserum was produced against synthesized peptide derived from human FKBPL. AA range:251-300 |
| Specificity : | FKBPL Polyclonal Antibody detects endogenous levels of FKBPL protein. |
| Formulation : | Liquid in PBS containing 50% glycerol, 0.5% BSA and 0.02% sodium azide. |
| Source : | Polyclonal, Rabbit,IgG |
| Dilution : | WB 1:500 - 1:2000. IHC 1:100 - 1:300. ELISA: 1:20000.. IF 1:50-200 |
| Purification : | The antibody was affinity-purified from rabbit antiserum by affinity-chromatography using epitope-specific immunogen. |

Concentration : 1 mg/ml

Storage Stability : -15°C to -25°C/1 year(Do not lower than -25°C)

Observed Band : 38kD

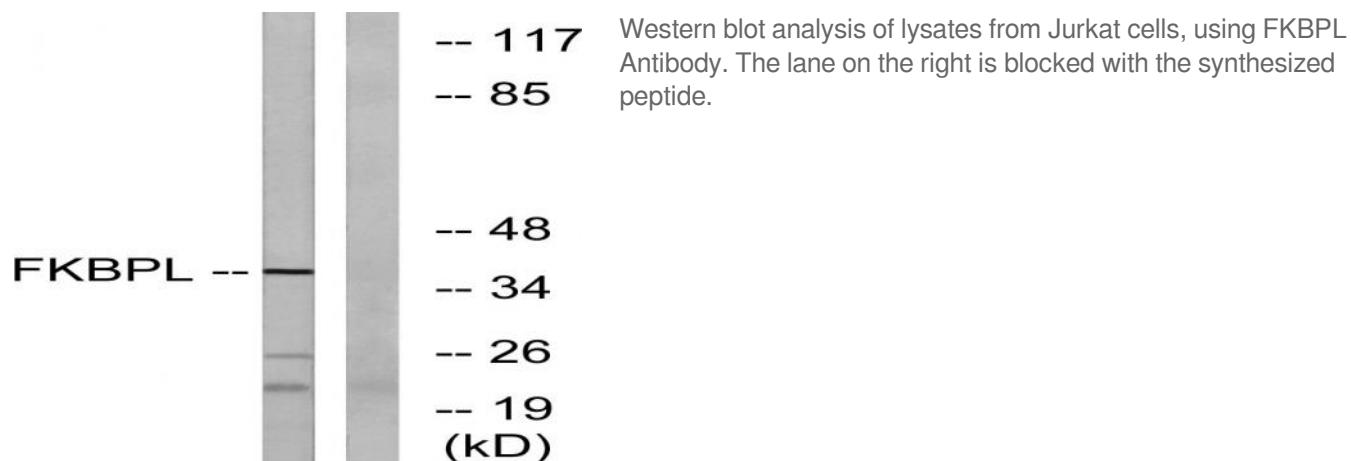
Background : The protein encoded by this gene has similarity to the immunophilin protein family, which play a role in immunoregulation and basic cellular processes involving protein folding and trafficking. The encoded protein is thought to have a potential role in the induced radioresistance. Also it appears to have some involvement in the control of the cell cycle. [provided by RefSeq, Jul 2008],

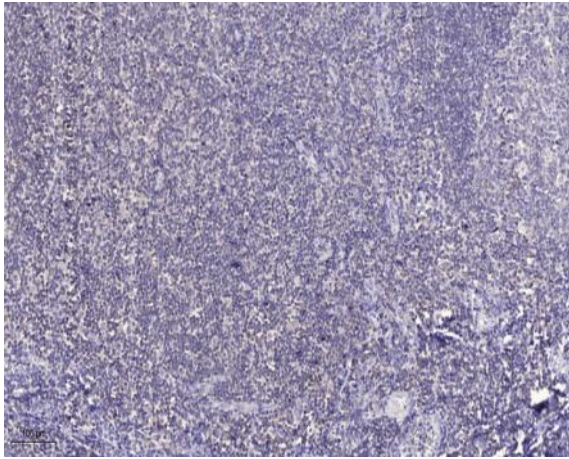
Function : function:May be involved in response to X-ray. Regulates p21 protein stability by binding to Hsp90 and p21.,PTM:Phosphorylated upon DNA damage, probably by ATM or ATR.,similarity:Contains 3 TPR repeats.,subunit:Forms a ternary complex with CDKN1A/p21 and HSP90AB1/Hsp90.,tissue specificity:Ubiquitously expressed with higher levels in testis.,

Subcellular Location : endoplasmic reticulum membrane,cytosol,

Expression : Ubiquitously expressed with higher levels in testis.

Products Images





Immunohistochemical analysis of paraffin-embedded human tonsil. 1, Antibody was diluted at 1:200(4° overnight). 2, Tris-EDTA,pH9.0 was used for antigen retrieval. 3,Secondary antibody was diluted at 1:200(room temperature, 30min).