

FGFR-5 Polyclonal Antibody

Catalog No :	YT1702
Reactivity :	Human;Mouse
Applications :	WB;ELISA
Target :	FGFR-5
Gene Name :	FGFRL1
Protein Name :	Fibroblast growth factor receptor-like 1
Human Gene Id :	53834
Human Swiss Prot No :	Q8N441
Mouse Gene Id :	116701
Mouse Swiss Prot No :	Q91V87
Immunogen :	Synthesized peptide derived from FGFR-5 . at AA range: 130-210
Specificity :	FGFR-5 Polyclonal Antibody detects endogenous levels of FGFR-5 protein.
Formulation :	Liquid in PBS containing 50% glycerol, 0.5% BSA and 0.02% sodium azide.
Source :	Polyclonal, Rabbit,IgG
Dilution :	WB 1:500 - 1:2000. ELISA: 1:40000. Not yet tested in other applications.
Purification :	The antibody was affinity-purified from rabbit antiserum by affinity-chromatography using epitope-specific immunogen.
Concentration :	1 mg/ml
Storage Stability :	-15°C to -25°C/1 year(Do not lower than -25°C)

Observed Band : 54kD

Background :

The protein encoded by this gene is a member of the fibroblast growth factor receptor (FGFR) family, where amino acid sequence is highly conserved between members and throughout evolution. FGFR family members differ from one another in their ligand affinities and tissue distribution. A full-length representative protein would consist of an extracellular region, composed of three immunoglobulin-like domains, a single hydrophobic membrane-spanning segment and a cytoplasmic tyrosine kinase domain. The extracellular portion of the protein interacts with fibroblast growth factors, setting in motion a cascade of downstream signals, ultimately influencing mitogenesis and differentiation. A marked difference between this gene product and the other family members is its lack of a cytoplasmic tyrosine kinase domain. The result is a transmembrane receptor that could interact with other

Function :

function:Has a negative effect on cell proliferation.,similarity:Contains 3 Ig-like C2-type (immunoglobulin-like) domains.,subcellular location:Predominantly localized in the plasma membrane but also detected in the Golgi and in secretory vesicles.,subunit:Interacts with FGF2 with a low affinity.,tissue specificity:Expressed preferentially in cartilaginous tissues and pancreas. Highly expressed in the liver, kidney, heart, brain and skeletal muscle. Weakly expressed in the lung, small intestine and spleen.,

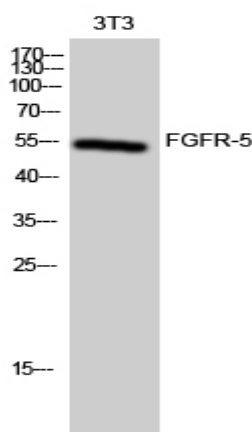
Subcellular Location :

Membrane ; Single-pass type I membrane protein . Predominantly localized in the plasma membrane but also detected in the Golgi and in secretory vesicles.

Expression :

Expressed preferentially in cartilaginous tissues and pancreas. Highly expressed in the liver, kidney, heart, brain and skeletal muscle. Weakly expressed in the lung, small intestine and spleen.

Products Images



Western Blot analysis of 3T3 cells using FGFR-5 Polyclonal Antibody