

FAST-1/2 Polyclonal Antibody

| | |
|------------------------------|---|
| Catalog No : | YT1679 |
| Reactivity : | Human;Mouse |
| Applications : | WB;IF;ELISA |
| Target : | FAST-1/2 |
| Gene Name : | FOXH1 |
| Protein Name : | Forkhead box protein H1 |
| Human Gene Id : | 8928 |
| Human Swiss Prot No : | O75593 |
| Mouse Gene Id : | 14106 |
| Mouse Swiss Prot No : | O88621 |
| Immunogen : | The antiserum was produced against synthesized peptide derived from human FOXH1. AA range:10-59 |
| Specificity : | FAST-1/2 Polyclonal Antibody detects endogenous levels of FAST-1/2 protein. |
| Formulation : | Liquid in PBS containing 50% glycerol, 0.5% BSA and 0.02% sodium azide. |
| Source : | Polyclonal, Rabbit,IgG |
| Dilution : | WB 1:500 - 1:2000. IF 1:200 - 1:1000. ELISA: 1:10000. Not yet tested in other applications. |
| Purification : | The antibody was affinity-purified from rabbit antiserum by affinity-chromatography using epitope-specific immunogen. |
| Concentration : | 1 mg/ml |
| Storage Stability : | -15°C to -25°C/1 year(Do not lower than -25°C) |

Observed Band : 40kD

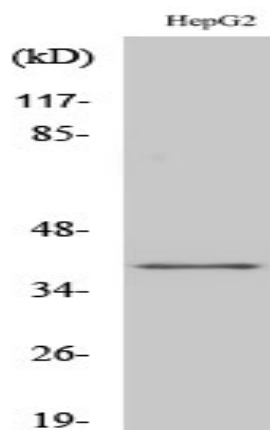
Background : FOXH1 encodes a human homolog of Xenopus forkhead activin signal transducer-1. FOXH1 protein binds SMAD2 and activates an activin response element via binding the DNA motif TGT(G/T)(T/G)ATT. [provided by RefSeq, Jul 2008],

Function : domain:The FM region is required for binding smad2/smad4 complexes. FM2 is more effective than FM1 and only interacts with phosphorylated smad2 that is in an activated smad complex.,function:Transcriptional activator. Recognizes and binds to the DNA sequence 5'-TGT[GT][GT]ATT-3'. Required for induction of the gooseoid (GSC) promoter by TGF-beta or activin signaling. Forms a transcriptionally active complex containing FOXH1/SMAD2/SMAD4 on a site on the GSC promoter called TARE (TGF-beta/activin response element).,similarity:Contains 1 fork-head DNA-binding domain.,subunit:Interacts with the MH2 domains of SMAD2 and SMAD3.,tissue specificity:Ubiquitous.,

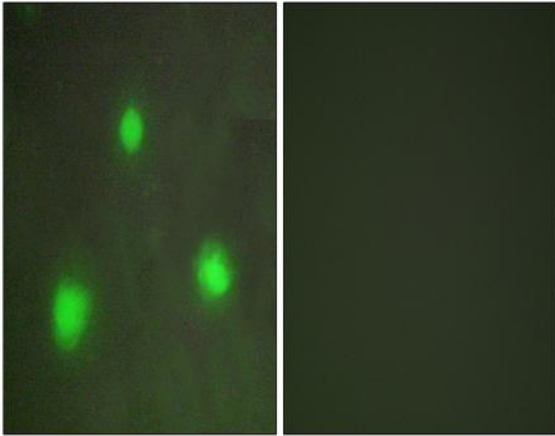
Subcellular Location : Nucleus.

Expression : Ubiquitous.

Products Images



Western Blot analysis of various cells using FAST-1/2 Polyclonal Antibody cells nucleus extracted by Minute TM Cytoplasmic and Nuclear Fractionation kit (SC-003, Inventbiotech, MN, USA).



Immunofluorescence analysis of A549 cells, using FOXH1 Antibody. The picture on the right is blocked with the synthesized peptide.