

**FAM80B Polyclonal Antibody**

<b>Catalog No :</b>	YT1673
<b>Reactivity :</b>	Human;Mouse;Rat;Monkey
<b>Applications :</b>	WB;ELISA
<b>Target :</b>	FAM80B
<b>Fields :</b>	>>Alanine, aspartate and glutamate metabolism;>>Metabolic pathways
<b>Gene Name :</b>	RIMKLB
<b>Protein Name :</b>	Beta-citryl-glutamate synthase B
<b>Human Gene Id :</b>	57494
<b>Human Swiss Prot No :</b>	Q9ULI2
<b>Mouse Gene Id :</b>	108653
<b>Mouse Swiss Prot No :</b>	Q80WS1
<b>Immunogen :</b>	The antiserum was produced against synthesized peptide derived from human RIMKB. AA range:177-226
<b>Specificity :</b>	FAM80B Polyclonal Antibody detects endogenous levels of FAM80B protein.
<b>Formulation :</b>	Liquid in PBS containing 50% glycerol, 0.5% BSA and 0.02% sodium azide.
<b>Source :</b>	Polyclonal, Rabbit,IgG
<b>Dilution :</b>	WB 1:500 - 1:2000. ELISA: 1:5000. Not yet tested in other applications.
<b>Purification :</b>	The antibody was affinity-purified from rabbit antiserum by affinity-chromatography using epitope-specific immunogen.
<b>Concentration :</b>	1 mg/ml

**Storage Stability :** -15°C to -25°C/1 year(Do not lower than -25°C)

**Observed Band :** 42kD

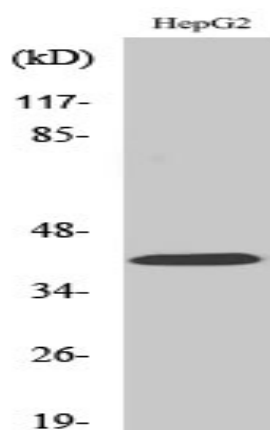
**Background :** cofactor: Binds 2 manganese ions per subunit., similarity: Belongs to the rimK family., similarity: Contains 1 ATP-grasp domain.,

**Function :** cofactor: Binds 2 manganese ions per subunit., similarity: Belongs to the rimK family., similarity: Contains 1 ATP-grasp domain.,

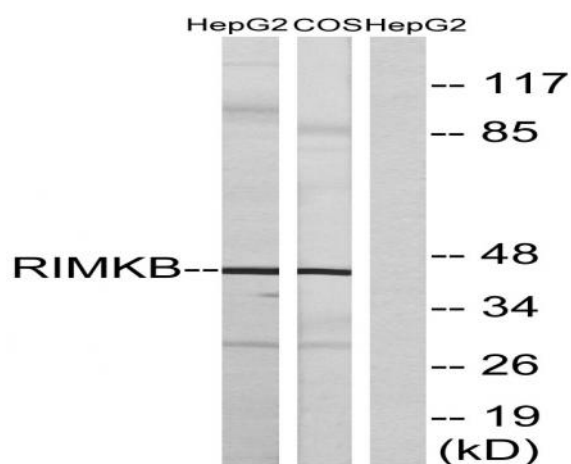
**Subcellular Location :** Cytoplasm .

**Expression :** Brain, Cervix, Ovary,

## Products Images



Western Blot analysis of various cells using FAM80B Polyclonal Antibody diluted at 1:500



Western blot analysis of lysates from HepG2 and COS cells, using RIMKB Antibody. The lane on the right is blocked with the synthesized peptide.