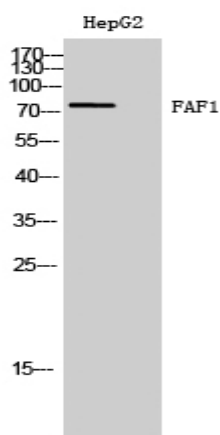


FAF1 Polyclonal Antibody

Catalog No :	YT1658
Reactivity :	Human;Mouse;Rat
Applications :	WB;ELISA
Target :	FAF1
Fields :	>>Necroptosis
Gene Name :	FAF1
Protein Name :	FAS-associated factor 1
Human Gene Id :	11124
Human Swiss Prot No :	Q9UNN5
Mouse Gene Id :	14084
Mouse Swiss Prot No :	P54731
Rat Gene Id :	140657
Rat Swiss Prot No :	Q924K2
Immunogen :	The antiserum was produced against synthesized peptide derived from human FAF1. AA range:531-580
Specificity :	FAF1 Polyclonal Antibody detects endogenous levels of FAF1 protein.
Formulation :	Liquid in PBS containing 50% glycerol, 0.5% BSA and 0.02% sodium azide.
Source :	Polyclonal, Rabbit,IgG
Dilution :	WB 1:500 - 1:2000. ELISA: 1:5000. Not yet tested in other applications.

Purification :	The antibody was affinity-purified from rabbit antiserum by affinity-chromatography using epitope-specific immunogen.
Concentration :	1 mg/ml
Storage Stability :	-15°C to -25°C/1 year(Do not lower than -25°C)
Observed Band :	75kD
Background :	Interaction of Fas ligand (TNFSF6) with the FAS antigen (TNFRSF6) mediates programmed cell death, also called apoptosis, in a number of organ systems. The protein encoded by this gene binds to FAS antigen and can initiate apoptosis or enhance apoptosis initiated through FAS antigen. Initiation of apoptosis by the protein encoded by this gene requires a ubiquitin-like domain but not the FAS-binding domain. [provided by RefSeq, Jul 2008],
Function :	function:Potentiates but cannot initiate FAS-induced apoptosis.,similarity:Contains 1 UBX domain.,subunit:Specifically interacts with the cytoplasmic domain of FAS.,tissue specificity:Most abundant in testis, slightly less abundant in skeletal muscle and heart, followed by prostate, thymus, ovary, small intestine, and colon. Not detected in the peripheral blood leukocytes.,
Subcellular Location :	Nucleus .
Expression :	Most abundant in testis, slightly less abundant in skeletal muscle and heart, followed by prostate, thymus, ovary, small intestine, and colon. Not detected in the peripheral blood leukocytes.

Products Images



Western Blot analysis of HepG2 cells using FAF1 Polyclonal Antibody