

DNA pol α Polyclonal Antibody

Catalog No :	YT1368
Reactivity :	Human;Rat;Mouse;
Applications :	WB;ELISA
Target :	DNA pol α
Fields :	>>DNA replication
Gene Name :	POLA1
Protein Name :	DNA polymerase alpha catalytic subunit
Human Gene Id :	5422
Human Swiss Prot No :	P09884
Mouse Swiss Prot No :	P33609
Immunogen :	The antiserum was produced against synthesized peptide derived from human DNA Polymerase alpha. AA range:81-130
Specificity :	DNA pol α Polyclonal Antibody detects endogenous levels of DNA pol α protein.
Formulation :	Liquid in PBS containing 50% glycerol, 0.5% BSA and 0.02% sodium azide.
Source :	Polyclonal, Rabbit,IgG
Dilution :	WB 1:500 - 1:2000. ELISA: 1:20000. Not yet tested in other applications.
Purification :	The antibody was affinity-purified from rabbit antiserum by affinity-chromatography using epitope-specific immunogen.
Concentration :	1 mg/ml
Storage Stability :	-15°C to -25°C/1 year(Do not lower than -25°C)

Observed Band : 165kD

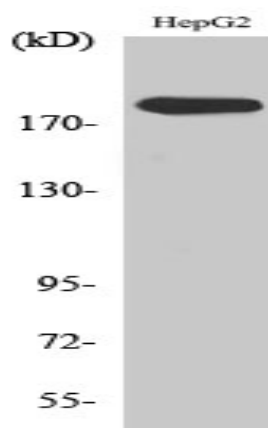
Cell Pathway : Purine metabolism;Pyrimidine metabolism;DNA replication;

Background : This gene encodes the catalytic subunit of DNA polymerase, which together with a regulatory and two primase subunits, forms the DNA polymerase alpha complex. The catalytic subunit plays an essential role in the initiation of DNA replication. [provided by RefSeq, Mar 2010],

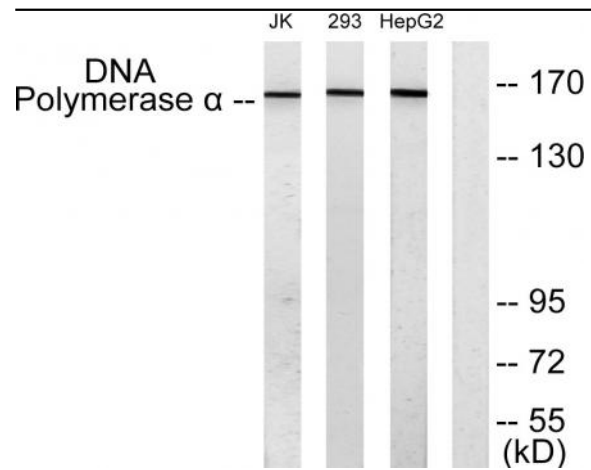
Function : catalytic activity:Deoxynucleoside triphosphate + DNA(n) = diphosphate + DNA(n+1).,function:Polymerase alpha in a complex with DNA primase is a replicative polymerase.,miscellaneous:In eukaryotes there are five DNA polymerases: alpha, beta, gamma, delta, and epsilon which are responsible for different reactions of DNA synthesis.,PTM:A 165 kDa form is probably produced by proteolytic cleavage at Lys-124.,similarity:Belongs to the DNA polymerase type-B family.,subunit:Interacts with SV40 Large T antigen; this interaction allows viral DNA replication.,

Subcellular Location : Nucleus . Cytoplasm, cytosol . In the cytosol, colocalizes with RNA:DNA hybrids with a speckled pattern. .

Products Images



Western Blot analysis of various cells using DNA pol α Polyclonal Antibody diluted at 1:1000



Western blot analysis of lysates from HepG2, 293, and Jurkat cells, using DNA Polymerase alpha Antibody. The lane on the right is blocked with the synthesized peptide.