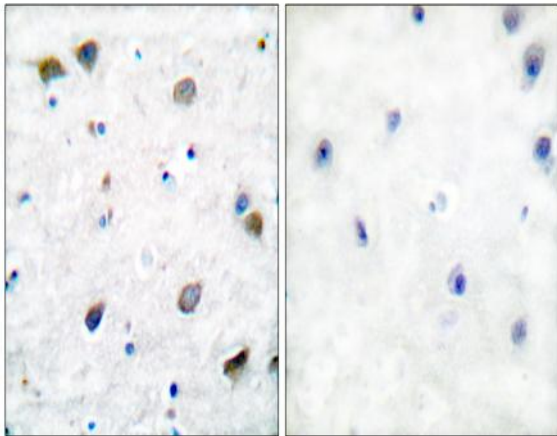


GABAA Rβ1 Polyclonal Antibody

Catalog No :	YT1824
Reactivity :	Human;Mouse;Rat
Applications :	IHC;IF;WB;ELISA
Target :	GABAA Rβ1
Fields :	>>Neuroactive ligand-receptor interaction;>>Retrograde endocannabinoid signaling;>>Serotonergic synapse;>>GABAergic synapse;>>Morphine addiction;>>Nicotine addiction
Gene Name :	GABRB1
Protein Name :	Gamma-aminobutyric acid receptor subunit beta-1
Human Gene Id :	2560
Human Swiss Prot No :	P18505
Mouse Gene Id :	14400
Mouse Swiss Prot No :	P50571
Rat Gene Id :	25450
Rat Swiss Prot No :	P15431
Immunogen :	The antiserum was produced against synthesized peptide derived from human GABA-RB. AA range:401-450
Specificity :	GABAA Rβ1 Polyclonal Antibody detects endogenous levels of GABAA Rβ1 protein.
Formulation :	Liquid in PBS containing 50% glycerol, 0.5% BSA and 0.02% sodium azide.
Source :	Polyclonal, Rabbit,IgG

Dilution :	WB 1:500-2000 IHC 1:100 - 1:300. ELISA: 1:40000.. IF 1:50-200
Purification :	The antibody was affinity-purified from rabbit antiserum by affinity-chromatography using epitope-specific immunogen.
Concentration :	1 mg/ml
Storage Stability :	-15°C to -25°C/1 year(Do not lower than -25°C)
Observed Band :	55kD
Cell Pathway :	Neuroactive ligand-receptor interaction;
Background :	The gamma-aminobutyric acid (GABA) A receptor is a multisubunit chloride channel that mediates the fastest inhibitory synaptic transmission in the central nervous system. This gene encodes GABA A receptor, beta 1 subunit. It is mapped to chromosome 4p12 in a cluster comprised of genes encoding alpha 4, alpha 2 and gamma 1 subunits of the GABA A receptor. Alteration of this gene is implicated in the pathogenetics of schizophrenia. [provided by RefSeq, Jul 2008],
Function :	function:GABA, the major inhibitory neurotransmitter in the vertebrate brain, mediates neuronal inhibition by binding to the GABA/benzodiazepine receptor and opening an integral chloride channel.,online information:Forbidden fruit - Issue 56 of March 2005,similarity:Belongs to the ligand-gated ionic channel (TC 1.A.9) family.,subunit:Binds UBQLN1 (By similarity). Generally pentameric. There are five types of GABA(A) receptor chains: alpha, beta, gamma, delta, and rho.,
Subcellular Location :	Cell junction, synapse, postsynaptic cell membrane ; Multi-pass membrane protein . Cell membrane ; Multi-pass membrane protein .
Expression :	Brain,Epithelium,

Products Images



Immunohistochemistry analysis of paraffin-embedded human brain tissue, using GABA-RB Antibody. The picture on the right is blocked with the synthesized peptide.