

**DHRS2 Polyclonal Antibody**

<b>Catalog No :</b>	YT1348
<b>Reactivity :</b>	Human;Mouse
<b>Applications :</b>	WB;ELISA
<b>Target :</b>	DHRS2
<b>Gene Name :</b>	DHRS2
<b>Protein Name :</b>	Dehydrogenase/reductase SDR family member 2
<b>Human Gene Id :</b>	10202
<b>Human Swiss Prot No :</b>	Q13268
<b>Immunogen :</b>	The antiserum was produced against synthesized peptide derived from human DHRS2. AA range:111-160
<b>Specificity :</b>	DHRS2 Polyclonal Antibody detects endogenous levels of DHRS2 protein.
<b>Formulation :</b>	Liquid in PBS containing 50% glycerol, 0.5% BSA and 0.02% sodium azide.
<b>Source :</b>	Polyclonal, Rabbit,IgG
<b>Dilution :</b>	WB 1:500 - 1:2000. ELISA: 1:40000. Not yet tested in other applications.
<b>Purification :</b>	The antibody was affinity-purified from rabbit antiserum by affinity-chromatography using epitope-specific immunogen.
<b>Concentration :</b>	1 mg/ml
<b>Storage Stability :</b>	-15°C to -25°C/1 year(Do not lower than -25°C)
<b>Observed Band :</b>	27kD
<b>Background :</b>	function:May inhibit cell replication either by catalyzing the oxidation of estrogen and androgen or by converting cortisone in cortisol.,similarity:Belongs to the short-

chain dehydrogenases/reductases (SDR) family.,

**Function :**

function:May inhibit cell replication either by catalyzing the oxidation of estrogen and androgen or by converting cortisone in cortisol.,similarity:Belongs to the short-chain dehydrogenases/reductases (SDR) family.,

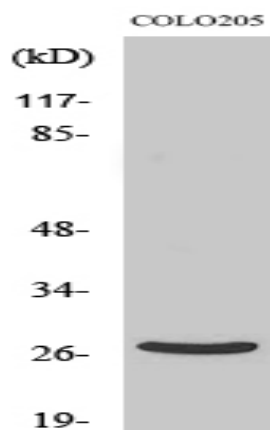
**Subcellular Location :**

Mitochondrion matrix. Nucleus. A minor fraction of the protein is translocated from the mitochondria to the nucleus, after cleavage of the targeting signal.

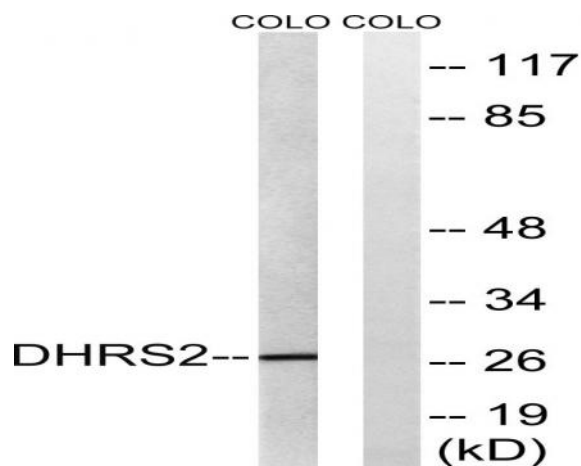
**Expression :**

Widely expressed, with highest levels in liver and kidney, followed by heart, spleen, skeletal muscle and placenta. In hemopoietic cells, expressed in dendritic cells, but not in monocytes, macrophages, granulocytes, nor in B and T lymphocytes.

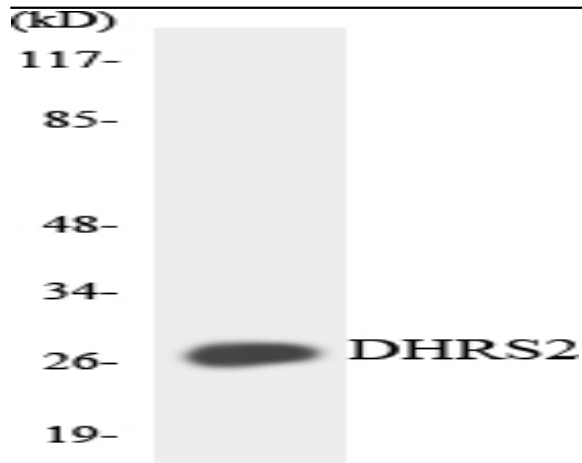
### Products Images



Western Blot analysis of various cells using DHRS2 Polyclonal Antibody



Western blot analysis of lysates from COLO cells, using DHRS2 Antibody. The lane on the right is blocked with the synthesized peptide.



Western blot analysis of the lysates from HeLa cells using DHRS2 antibody.