

EphA6 Polyclonal Antibody

Catalog No :	YT1580
Reactivity :	Human;Mouse;Rat
Applications :	IHC;IF;ELISA
Target :	EphA6
Fields :	>>Axon guidance
Gene Name :	EPHA6
Protein Name :	Ephrin type-A receptor 6
Human Gene Id :	285220
Human Swiss Prot No :	Q9UF33
Mouse Swiss Prot No :	Q62413
Rat Swiss Prot No :	P54758
Immunogen :	The antiserum was produced against synthesized peptide derived from human EPHA6. AA range:891-940
Specificity :	EphA6 Polyclonal Antibody detects endogenous levels of EphA6 protein.
Formulation :	Liquid in PBS containing 50% glycerol, 0.5% BSA and 0.02% sodium azide.
Source :	Polyclonal, Rabbit,IgG
Dilution :	IHC 1:100 - 1:300. IF 1:200 - 1:1000. ELISA: 1:20000. Not yet tested in other applications.
Purification :	The antibody was affinity-purified from rabbit antiserum by affinity-chromatography using epitope-specific immunogen.
Concentration :	1 mg/ml

Storage Stability : -15°C to -25°C/1 year (Do not lower than -25°C)

Molecularweight : 116kD

Cell Pathway : Axon guidance;

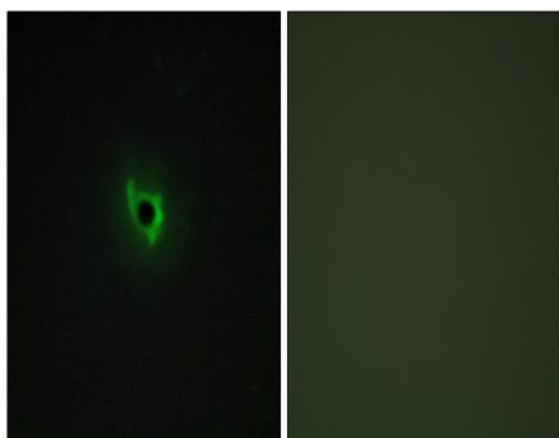
Background : catalytic activity:ATP + a [protein]-L-tyrosine = ADP + a [protein]-L-tyrosine phosphate.,function:Receptor for members of the ephrin-A family.,similarity:Belongs to the protein kinase superfamily. Tyr protein kinase family. Ephrin receptor subfamily.,similarity:Contains 1 protein kinase domain.,similarity:Contains 1 SAM (sterile alpha motif) domain.,similarity:Contains 2 fibronectin type-III domains.,tissue specificity:Expressed in brain and testis.,

Function : catalytic activity:ATP + a [protein]-L-tyrosine = ADP + a [protein]-L-tyrosine phosphate.,function:Receptor for members of the ephrin-A family.,similarity:Belongs to the protein kinase superfamily. Tyr protein kinase family. Ephrin receptor subfamily.,similarity:Contains 1 protein kinase domain.,similarity:Contains 1 SAM (sterile alpha motif) domain.,similarity:Contains 2 fibronectin type-III domains.,tissue specificity:Expressed in brain and testis.,

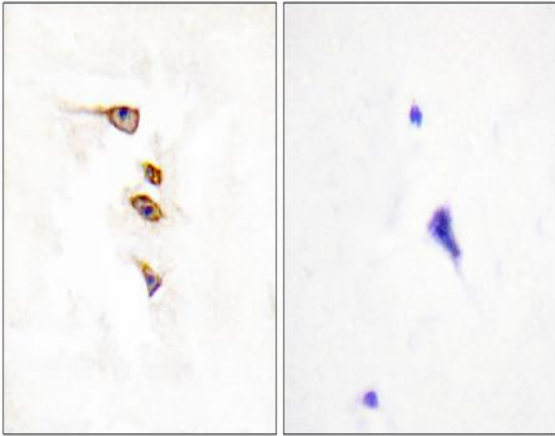
Subcellular Location : Membrane ; Single-pass type I membrane protein .

Expression : Expressed in brain and testis.

Products Images



Immunofluorescence analysis of COS7 cells, using EPHA6 Antibody. The picture on the right is blocked with the synthesized peptide.



Immunohistochemistry analysis of paraffin-embedded human brain tissue, using EPHA6 Antibody. The picture on the right is blocked with the synthesized peptide.