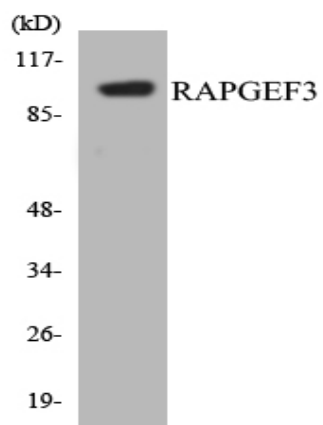


Epac Polyclonal Antibody

Catalog No :	YT1571
Reactivity :	Human;Mouse;Rat
Applications :	WB;ELISA
Target :	Epac
Fields :	>>Rap1 signaling pathway;>>cAMP signaling pathway;>>Phospholipase D signaling pathway;>>Adrenergic signaling in cardiomyocytes;>>Leukocyte transendothelial migration;>>Long-term potentiation;>>Serotonergic synapse
Gene Name :	RAPGEF3
Protein Name :	Rap guanine nucleotide exchange factor 3
Human Gene Id :	10411
Human Swiss Prot No :	O95398
Mouse Gene Id :	223864
Mouse Swiss Prot No :	Q8VCC8
Rat Gene Id :	59326
Rat Swiss Prot No :	Q9Z1C8
Immunogen :	The antiserum was produced against synthesized peptide derived from human RAPGEF3. AA range:712-761
Specificity :	Epac Polyclonal Antibody detects endogenous levels of Epac protein.
Formulation :	Liquid in PBS containing 50% glycerol, 0.5% BSA and 0.02% sodium azide.
Source :	Polyclonal, Rabbit,IgG
Dilution :	WB 1:500 - 1:2000. ELISA: 1:40000. Not yet tested in other applications.

Purification :	The antibody was affinity-purified from rabbit antiserum by affinity-chromatography using epitope-specific immunogen.
Concentration :	1 mg/ml
Storage Stability :	-15°C to -25°C/1 year(Do not lower than -25°C)
Observed Band :	100kD
Cell Pathway :	Regulation of Actin Dynamics; AMPK
Background :	caution:It is uncertain whether Met-1 or Met-43 is the initiator.,domain:The DEP domain is involved in membrane localization independent from regulation by cAMP.,function:Guanine nucleotide exchange factor (GEF) for RAP1A and RAP2A small GTPases that is activated by binding cAMP.,similarity:Contains 1 cyclic nucleotide-binding domain.,similarity:Contains 1 DEP domain.,similarity:Contains 1 N-terminal Ras-GEF domain.,similarity:Contains 1 Ras-GEF domain.,tissue specificity:Widely expressed with highest levels in adult kidney, heart, thyroid and brain, and fetal kidney.,
Function :	caution:It is uncertain whether Met-1 or Met-43 is the initiator.,domain:The DEP domain is involved in membrane localization independent from regulation by cAMP.,function:Guanine nucleotide exchange factor (GEF) for RAP1A and RAP2A small GTPases that is activated by binding cAMP.,similarity:Contains 1 cyclic nucleotide-binding domain.,similarity:Contains 1 DEP domain.,similarity:Contains 1 N-terminal Ras-GEF domain.,similarity:Contains 1 Ras-GEF domain.,tissue specificity:Widely expressed with highest levels in adult kidney, heart, thyroid and brain, and fetal kidney.,
Subcellular Location :	Endomembrane system .
Expression :	Widely expressed with highest levels in adult kidney, heart, thyroid and brain, and fetal kidney.

Products Images



Western blot analysis of the lysates from HeLa cells using RAPGEF3 antibody.