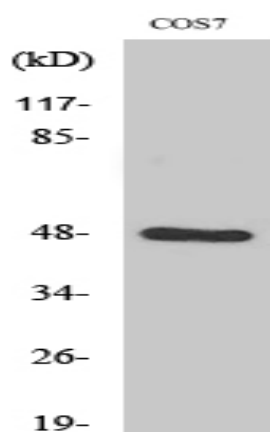


Endophilin B2 Polyclonal Antibody

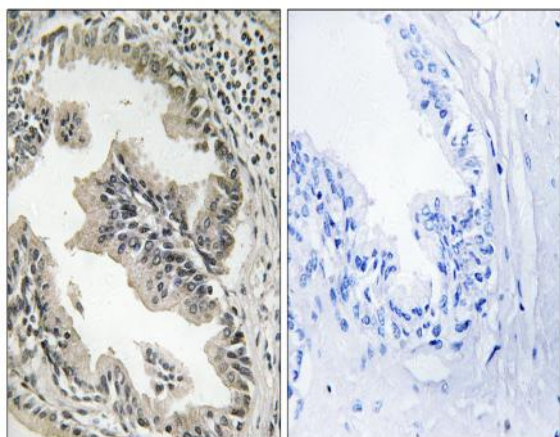
Catalog No :	YT1558
Reactivity :	Human;Mouse;Rat;Monkey
Applications :	WB;IHC;IF;ELISA
Target :	Endophilin B2
Fields :	>>Endocytosis
Gene Name :	SH3GLB2
Protein Name :	Endophilin-B2
Human Gene Id :	56904
Human Swiss Prot No :	Q9NR46
Mouse Gene Id :	227700
Mouse Swiss Prot No :	Q8R3V5
Rat Gene Id :	311848
Rat Swiss Prot No :	Q5PPJ9
Immunogen :	The antiserum was produced against synthesized peptide derived from human SH3GLB2. AA range:131-180
Specificity :	Endophilin B2 Polyclonal Antibody detects endogenous levels of Endophilin B2 protein.
Formulation :	Liquid in PBS containing 50% glycerol, 0.5% BSA and 0.02% sodium azide.
Source :	Polyclonal, Rabbit,IgG
Dilution :	WB 1:500 - 1:2000. IHC 1:100 - 1:300. ELISA: 1:40000.. IF 1:50-200

Purification :	The antibody was affinity-purified from rabbit antiserum by affinity-chromatography using epitope-specific immunogen.
Concentration :	1 mg/ml
Storage Stability :	-15°C to -25°C/1 year(Do not lower than -25°C)
Observed Band :	48kD
Cell Pathway :	Endocytosis;
Background :	similarity:Belongs to the endophilin family.,similarity:Contains 1 BAR domain.,similarity:Contains 1 SH3 domain.,subunit:Homodimer, and heterodimer with SH3GLB1.,tissue specificity:Detected in skeletal muscle, adipocyte, brain, lung, colon and mammary gland.,
Function :	similarity:Belongs to the endophilin family.,similarity:Contains 1 BAR domain.,similarity:Contains 1 SH3 domain.,subunit:Homodimer, and heterodimer with SH3GLB1.,tissue specificity:Detected in skeletal muscle, adipocyte, brain, lung, colon and mammary gland.,
Subcellular Location :	Cytoplasm .
Expression :	Detected in skeletal muscle, adipocyte, brain, lung, colon and mammary gland.

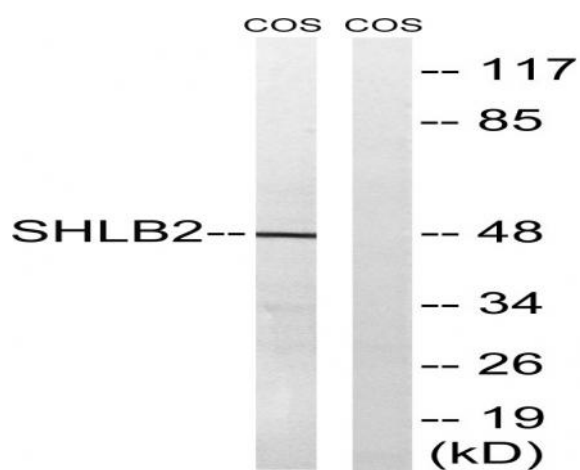
Products Images



Western Blot analysis of various cells using Endophilin B2 Polyclonal Antibody diluted at 1:1000



Immunohistochemistry analysis of paraffin-embedded human prostate carcinoma tissue, using SH3GLB2 Antibody. The picture on the right is blocked with the synthesized peptide.



Western blot analysis of lysates from COS7 cells, using SH3GLB2 Antibody. The lane on the right is blocked with the synthesized peptide.