

ELOVL3 Polyclonal Antibody

Catalog No :	YT1537
Reactivity :	Human;Rat;Mouse;
Applications :	IHC;IF;ELISA
Target :	ELOVL3
Fields :	>>Fatty acid elongation;>>Biosynthesis of unsaturated fatty acids;>>Metabolic pathways;>>Fatty acid metabolism
Gene Name :	ELOVL3
Protein Name :	Elongation of very long chain fatty acids protein 3
Human Gene Id :	83401
Human Swiss Prot No :	Q9HB03
Mouse Swiss Prot No :	O35949
Immunogen :	The antiserum was produced against synthesized peptide derived from human ELOVL3. AA range:31-80
Specificity :	ELOVL3 Polyclonal Antibody detects endogenous levels of ELOVL3 protein.
Formulation :	Liquid in PBS containing 50% glycerol, 0.5% BSA and 0.02% sodium azide.
Source :	Polyclonal, Rabbit,IgG
Dilution :	IHC 1:100 - 1:300. ELISA: 1:20000.. IF 1:50-200
Purification :	The antibody was affinity-purified from rabbit antiserum by affinity-chromatography using epitope-specific immunogen.
Concentration :	1 mg/ml
Storage Stability :	-15°C to -25°C/1 year(Do not lower than -25°C)

Molecularweight : 32kD

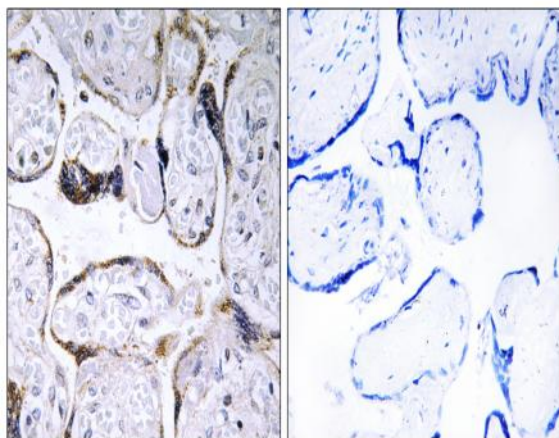
Background : This gene encodes a protein that belongs to the GNS1/SUR4 family. Members of this family play a role in elongation of long chain fatty acids to provide precursors for synthesis of sphingolipids and ceramides. [provided by RefSeq, Jul 2013],

Function : domain:The di-lysine motif confers endoplasmic reticulum localization for type I membrane proteins.,function:May be involved in a membrane event related to cellular proliferation in brown adipose tissue. Could be implicated in synthesis of very long chain fatty acids and sphingolipids. May catalyze one or both of the reduction reaction in fatty acid elongation, i.e., conversion of beta-ketoacyl CoA to beta-hydroxyacyl CoA or reduction of trans-2-enoyl CoA to the saturated acyl CoA derivative.,similarity:Belongs to the ELO family.,

Subcellular Location : Endoplasmic reticulum membrane ; Multi-pass membrane protein .

Expression : Testis.

Products Images



Immunohistochemistry analysis of paraffin-embedded human placenta, using ELOVL3 Antibody. The picture on the right is blocked with the synthesized peptide.