

## ELOVL1 Polyclonal Antibody

<b>Catalog No :</b>	YT1535
<b>Reactivity :</b>	Human;Mouse
<b>Applications :</b>	WB;IHC;IF;ELISA
<b>Target :</b>	ELOVL1
<b>Fields :</b>	>>Fatty acid elongation;>>Biosynthesis of unsaturated fatty acids;>>Metabolic pathways;>>Fatty acid metabolism
<b>Gene Name :</b>	ELOVL1
<b>Protein Name :</b>	Elongation of very long chain fatty acids protein 1
<b>Human Gene Id :</b>	64834
<b>Human Swiss Prot No :</b>	Q9BW60
<b>Mouse Gene Id :</b>	54325
<b>Mouse Swiss Prot No :</b>	Q9JLJ5
<b>Immunogen :</b>	The antiserum was produced against synthesized peptide derived from human ELOVL1. AA range:101-150
<b>Specificity :</b>	ELOVL1 Polyclonal Antibody detects endogenous levels of ELOVL1 protein.
<b>Formulation :</b>	Liquid in PBS containing 50% glycerol, 0.5% BSA and 0.02% sodium azide.
<b>Source :</b>	Polyclonal, Rabbit,IgG
<b>Dilution :</b>	WB 1:500 - 1:2000. ELISA: 1:40000.. IF 1:50-200
<b>Purification :</b>	The antibody was affinity-purified from rabbit antiserum by affinity-chromatography using epitope-specific immunogen.
<b>Concentration :</b>	1 mg/ml

**Storage Stability :** -15°C to -25°C/1 year(Do not lower than -25°C)

**Observed Band :** 33kD

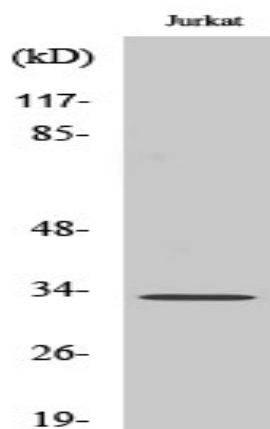
**Background :** domain:The di-lysine motif confers endoplasmic reticulum localization for type I membrane proteins.,function:Could be implicated in tissue-specific synthesis of very long chain fatty acids and sphingolipids. May catalyze one or both of the reduction reaction in fatty acid elongation, i.e., conversion of beta-ketoacyl CoA to beta-hydroxyacyl CoA or reduction of trans-2-enoyl CoA to the saturated acyl CoA derivative.,similarity:Belongs to the ELO family.,

**Function :** domain:The di-lysine motif confers endoplasmic reticulum localization for type I membrane proteins.,function:Could be implicated in tissue-specific synthesis of very long chain fatty acids and sphingolipids. May catalyze one or both of the reduction reaction in fatty acid elongation, i.e., conversion of beta-ketoacyl CoA to beta-hydroxyacyl CoA or reduction of trans-2-enoyl CoA to the saturated acyl CoA derivative.,similarity:Belongs to the ELO family.,

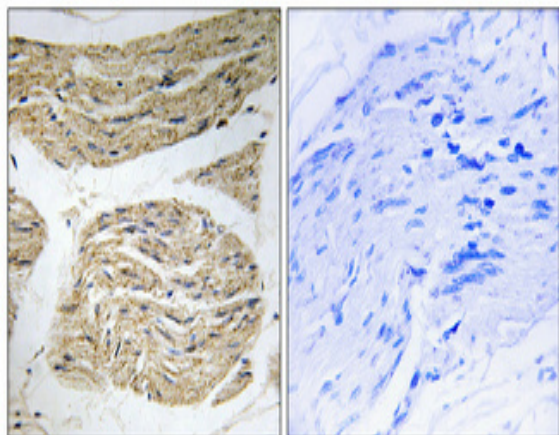
**Subcellular Location :** Endoplasmic reticulum membrane ; Multi-pass membrane protein .

**Expression :** Ubiquitous.

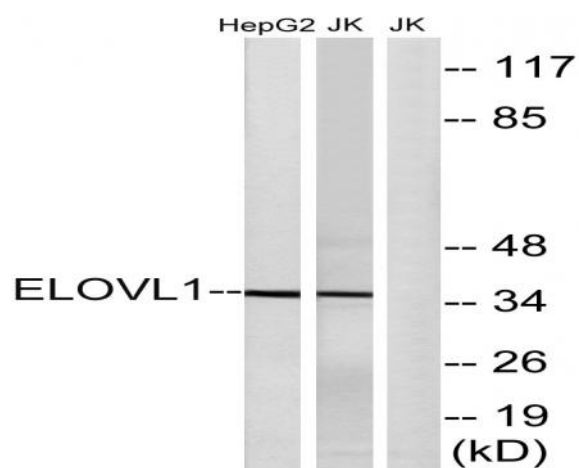
## Products Images



Western Blot analysis of various cells using ELOVL1 Polyclonal Antibody diluted at 1:1000



Immunohistochemical analysis of paraffin-embedded Human skeletal muscle. Antibody was diluted at 1:100(4° overnight). High-pressure and temperature Tris-EDTA,pH8.0 was used for antigen retrieval. Negative contrl (right) obtained from antibody was pre-absorbed by immunogen peptide.



Western blot analysis of lysates from Jurkat and HepG2 cells, using ELOVL1 Antibody. The lane on the right is blocked with the synthesized peptide.