

CYP4V2 Polyclonal Antibody

Catalog No :	YT1236
Reactivity :	Human;Rat;Mouse;
Applications :	WB;IHC;IF;ELISA
Target :	CYP4V2
Gene Name :	CYP4V2
Protein Name :	Cytochrome P450 4V2
Human Gene Id :	285440
Human Swiss Prot No :	Q6ZWL3
Mouse Swiss Prot No :	Q9DBW0
Immunogen :	Synthesized peptide derived from the Internal region of human CYP4V2.
Specificity :	CYP4V2 Polyclonal Antibody detects endogenous levels of CYP4V2 protein.
Formulation :	Liquid in PBS containing 50% glycerol, 0.5% BSA and 0.02% sodium azide.
Source :	Polyclonal, Rabbit,IgG
Dilution :	WB 1:500 - 1:2000. IHC 1:100 - 1:300. ELISA: 1:20000.. IF 1:50-200
Purification :	The antibody was affinity-purified from rabbit antiserum by affinity-chromatography using epitope-specific immunogen.
Concentration :	1 mg/ml
Storage Stability :	-15°C to -25°C/1 year(Do not lower than -25°C)
Observed Band :	60kD

Background :

This gene encodes a member of the cytochrome P450 hemethiolate protein superfamily which are involved in oxidizing various substrates in the metabolic pathway. It is implicated in the metabolism of fatty acid precursors into n-3 polyunsaturated fatty acids. Mutations in this gene result in Bietti crystalline corneoretinal dystrophy. [provided by RefSeq, Jul 2008],

Function :

cofactor:Heme group.,disease:Defects in CYP4V2 are a cause of Bietti crystalline corneoretinal dystrophy (BCD) [MIM:210370]. BCD is an autosomal recessive retinal dystrophy characterized by multiple glistening intraretinal crystals scattered over the fundus, a characteristic degeneration of the retina, and sclerosis of the choroidal vessels, ultimately resulting in progressive night blindness and constriction of the visual field. Most cases have similar crystals at the corneoscleral limbus. Clinically, BCD is progressive. Patients develop decreased vision, nyctalopia, and paracentral scotomata between the 2nd and 4th decade of life. Later, patients develop peripheral visual field loss and marked visual impairment, usually progressing to legal blindness by the 5th or 6th decade of life.,function:Unknown. May have a role in fatty acid and steroid metabolism.,similarity:Belongs to the cytoc

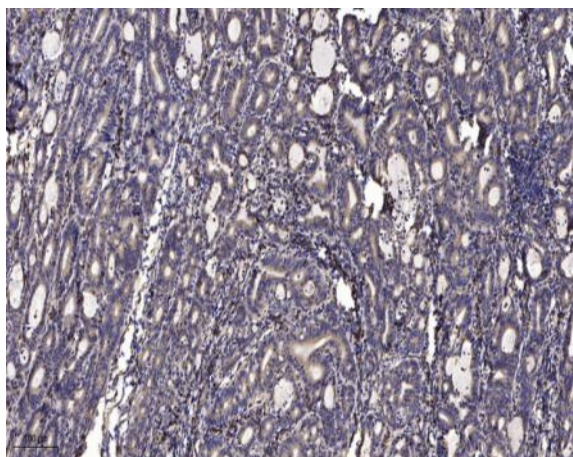
Subcellular Location :

Endoplasmic reticulum membrane ; Single-pass membrane protein .

Expression :

Broadly expressed. Detected in heart, brain, placenta, lung, liver, skeletal muscle, kidney, pancreas, retina, retinal pigment epithelium (RPE) and lymphocytes.

Products Images



Immunohistochemical analysis of paraffin-embedded human Gastric adenocarcinoma. 1, Antibody was diluted at 1:200(4° overnight). 2, Tris-EDTA,pH9.0 was used for antigen retrieval. 3,Secondary antibody was diluted at 1:200(room temperature, 45min).