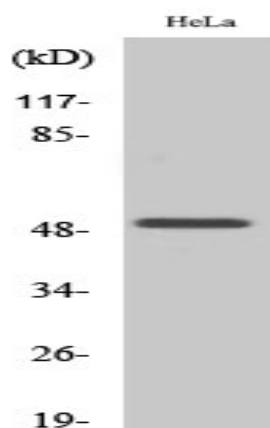


Egr-2 Polyclonal Antibody

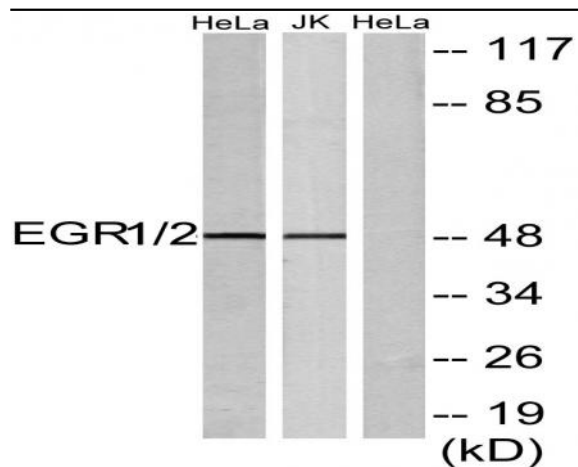
Catalog No :	YT1498
Reactivity :	Human;Mouse;Rat
Applications :	WB;IHC;IF;ELISA
Target :	Egr-2
Fields :	>>Apelin signaling pathway;>>GnRH signaling pathway;>>Parathyroid hormone synthesis, secretion and action;>>AGE-RAGE signaling pathway in diabetic complications;>>Prion disease;>>Human T-cell leukemia virus 1 infection
Gene Name :	EGR2
Protein Name :	Early growth response protein 2
Human Gene Id :	1958/1959
Human Swiss Prot No :	P18146/P11161
Mouse Gene Id :	13653/13654
Rat Gene Id :	24330/114090
Rat Swiss Prot No :	P08154/P51774
Immunogen :	The antiserum was produced against synthesized peptide derived from human EGR1/2. AA range:371-420
Specificity :	Egr-2 Polyclonal Antibody detects endogenous levels of Egr-2 protein.
Formulation :	Liquid in PBS containing 50% glycerol, 0.5% BSA and 0.02% sodium azide.
Source :	Polyclonal, Rabbit,IgG
Dilution :	WB 1:500 - 1:2000. IHC 1:100 - 1:300. IF 1:200 - 1:1000. ELISA: 1:20000. Not yet tested in other applications.

Purification :	The antibody was affinity-purified from rabbit antiserum by affinity-chromatography using epitope-specific immunogen.
Concentration :	1 mg/ml
Storage Stability :	-15°C to -25°C/1 year(Do not lower than -25°C)
Observed Band :	50kD
Cell Pathway :	Prion diseases;
Background :	The protein encoded by this gene belongs to the EGR family of C2H2-type zinc-finger proteins. It is a nuclear protein and functions as a transcriptional regulator. The products of target genes it activates are required for differentiation and mitogenesis. Studies suggest this is a cancer suppressor gene. [provided by RefSeq, Dec 2014],
Function :	function:Transcriptional regulator. Recognizes and binds to the DNA sequence 5'-CGCCCCCGC-3'(EGR-site). Activates the transcription of target genes whose products are required for mitogenesis and differentiation.,induction:By growth factors.,similarity:Belongs to the EGR C2H2-type zinc-finger protein family.,similarity:Contains 3 C2H2-type zinc fingers.,
Subcellular Location :	Nucleus . Cytoplasm .
Expression :	Detected in neutrophils (at protein level).

Products Images



Western Blot analysis of various cells using Egr-2 Polyclonal Antibody cells nucleus extracted by Minute TM Cytoplasmic and Nuclear Fractionation kit (SC-003, Inventbiotech, MN, USA).



Western blot analysis of lysates from HeLa and Jurkat cells, using EGR1/2 Antibody. The lane on the right is blocked with the synthesized peptide.



Immunohistochemical analysis of paraffin-embedded human tonsil. 1, Tris-EDTA, pH 9.0 was used for antigen retrieval. 2 Antibody was diluted at 1:200 (4° overnight). 3, Secondary antibody was diluted at 1:200 (room temperature, 45min).