

EDG-6 Polyclonal Antibody

Catalog No :	YT1468
Reactivity :	Human;Rat;Mouse;
Applications :	WB;IF;ELISA
Target :	EDG-6
Fields :	>>FoxO signaling pathway;>>Sphingolipid signaling pathway;>>Neuroactive ligand-receptor interaction
Gene Name :	S1PR4
Protein Name :	Sphingosine 1-phosphate receptor 4
Human Gene Id :	8698
Human Swiss Prot No :	O95977
Mouse Swiss Prot No :	Q9Z0L1
Immunogen :	The antiserum was produced against synthesized peptide derived from human EDG6. AA range:211-260
Specificity :	EDG-6 Polyclonal Antibody detects endogenous levels of EDG-6 protein.
Formulation :	Liquid in PBS containing 50% glycerol, 0.5% BSA and 0.02% sodium azide.
Source :	Polyclonal, Rabbit,IgG
Dilution :	WB 1:500 - 1:2000. IF 1:200 - 1:1000. ELISA: 1:5000. Not yet tested in other applications.
Purification :	The antibody was affinity-purified from rabbit antiserum by affinity-chromatography using epitope-specific immunogen.
Concentration :	1 mg/ml

Storage Stability : -15°C to -25°C/1 year(Do not lower than -25°C)

Observed Band : 41kD

Cell Pathway : Neuroactive ligand-receptor interaction;

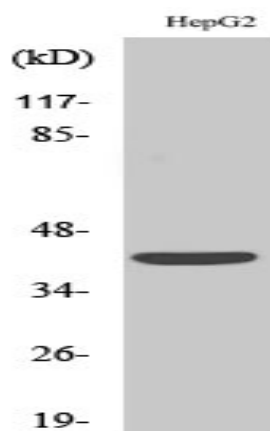
Background : This gene is a member of the endothelial differentiation, G-protein-coupled (EDG) receptor gene family. EDG receptors bind lysophospholipids or lysosphingolipids as ligands, and are involved in cell signalling in many different cell types. This EDG receptor gene is intronless and is specifically expressed in the lymphoid tissue. [provided by RefSeq, Jul 2008],

Function : function:Receptor for the lysosphingolipid sphingosine 1-phosphate (S1P). S1P is a bioactive lysophospholipid that elicits diverse physiological effect on most types of cells and tissues. May be involved in cell migration processes that are specific for lymphocytes.,similarity:Belongs to the G-protein coupled receptor 1 family.,tissue specificity:Specifically expressed in fetal and adult lymphoid and hematopoietic tissue as well as in lung. Considerable level of expression in adult and fetal spleen as well as adult peripheral leukocytes and lung. Lower expression in adult thymus, lymph node, bone marrow, and appendix as well as in fetal liver, thymus, and lung.,

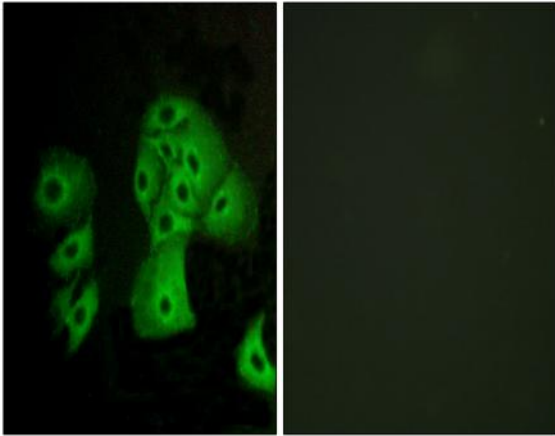
Subcellular Location : Cell membrane; Multi-pass membrane protein.

Expression : Specifically expressed in fetal and adult lymphoid and hematopoietic tissue as well as in lung. Considerable level of expression in adult and fetal spleen as well as adult peripheral leukocytes and lung. Lower expression in adult thymus, lymph node, bone marrow, and appendix as well as in fetal liver, thymus, and lung.

Products Images



Western Blot analysis of various cells using EDG-6 Polyclonal Antibody



Immunofluorescence analysis of A549 cells, using EDG6 Antibody. The picture on the right is blocked with the synthesized peptide.