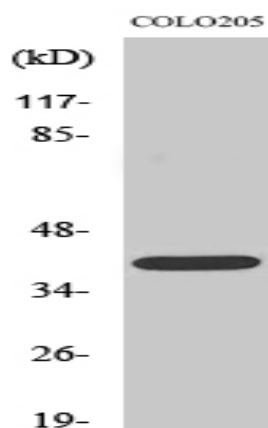


## EDG-5 Polyclonal Antibody

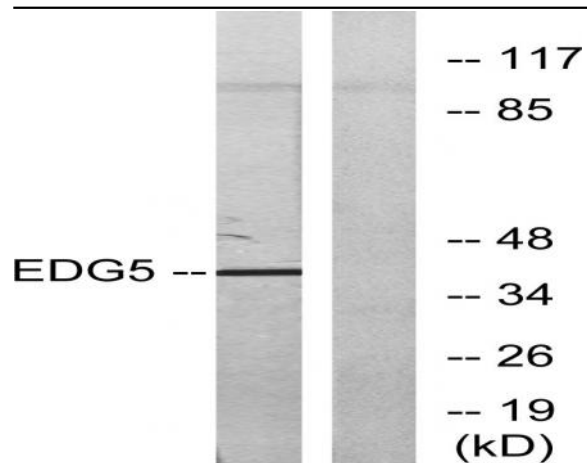
<b>Catalog No :</b>	YT1467
<b>Reactivity :</b>	Human;Mouse;Rat
<b>Applications :</b>	WB;IHC;IF;ELISA
<b>Target :</b>	EDG-5
<b>Fields :</b>	>>Sphingolipid signaling pathway;>>Neuroactive ligand-receptor interaction
<b>Gene Name :</b>	S1PR2
<b>Protein Name :</b>	Sphingosine 1-phosphate receptor 2
<b>Human Gene Id :</b>	9294
<b>Human Swiss Prot No :</b>	O95136
<b>Mouse Gene Id :</b>	14739
<b>Mouse Swiss Prot No :</b>	P52592
<b>Rat Gene Id :</b>	29415
<b>Rat Swiss Prot No :</b>	P47752
<b>Immunogen :</b>	The antiserum was produced against synthesized peptide derived from human EDG5. AA range:261-310
<b>Specificity :</b>	EDG-5 Polyclonal Antibody detects endogenous levels of EDG-5 protein.
<b>Formulation :</b>	Liquid in PBS containing 50% glycerol, 0.5% BSA and 0.02% sodium azide.
<b>Source :</b>	Polyclonal, Rabbit,IgG
<b>Dilution :</b>	WB 1:500 - 1:2000. IHC 1:100 - 1:300. IF 1:200 - 1:1000. ELISA: 1:10000. Not yet tested in other applications.

<b>Purification :</b>	The antibody was affinity-purified from rabbit antiserum by affinity-chromatography using epitope-specific immunogen.
<b>Concentration :</b>	1 mg/ml
<b>Storage Stability :</b>	-15°C to -25°C/1 year(Do not lower than -25°C)
<b>Observed Band :</b>	39kD
<b>Cell Pathway :</b>	Neuroactive ligand-receptor interaction;
<b>Background :</b>	This gene encodes a member of the G protein-coupled receptors, as well as the EDG family of proteins. The encoded protein is a receptor for sphingosine 1-phosphate, which participates in cell proliferation, survival, and transcriptional activation. Defects in this gene have been associated with congenital profound deafness. [provided by RefSeq, Mar 2016],
<b>Function :</b>	function:Receptor for the lysosphingolipid sphingosine 1-phosphate (S1P). S1P is a bioactive lysophospholipid that elicits diverse physiological effect on most types of cells and tissues. When expressed in rat HTC4 hepatoma cells, is capable of mediating S1P-induced cell proliferation and suppression of apoptosis.,similarity:Belongs to the G-protein coupled receptor 1 family.,
<b>Subcellular Location :</b>	Cell membrane; Multi-pass membrane protein.
<b>Expression :</b>	Fetal brain,

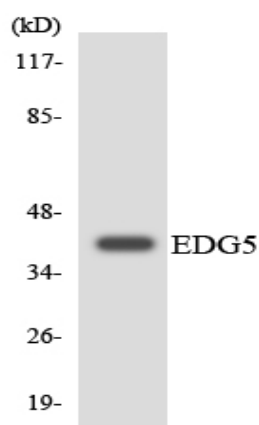
## Products Images



Western Blot analysis of various cells using EDG-5 Polyclonal Antibody



Western blot analysis of lysates from COLO205 cells, using EDG5 Antibody. The lane on the right is blocked with the synthesized peptide.



Western blot analysis of the lysates from RAW264.7 cells using EDG5 antibody.