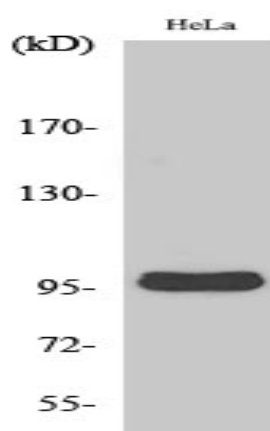


## Cyclin M2 Polyclonal Antibody

<b>Catalog No :</b>	YT1184
<b>Reactivity :</b>	Human;Mouse;Rat
<b>Applications :</b>	WB;ELISA
<b>Target :</b>	Cyclin M2
<b>Gene Name :</b>	CNNM2
<b>Protein Name :</b>	Metal transporter CNNM2
<b>Human Gene Id :</b>	54805
<b>Human Swiss Prot No :</b>	Q9H8M5
<b>Mouse Gene Id :</b>	94219
<b>Mouse Swiss Prot No :</b>	Q3TWN3
<b>Rat Gene Id :</b>	294014
<b>Rat Swiss Prot No :</b>	Q5U2P1
<b>Immunogen :</b>	The antiserum was produced against synthesized peptide derived from human CNNM2. AA range:571-620
<b>Specificity :</b>	Cyclin M2 Polyclonal Antibody detects endogenous levels of Cyclin M2 protein.
<b>Formulation :</b>	Liquid in PBS containing 50% glycerol, 0.5% BSA and 0.02% sodium azide.
<b>Source :</b>	Polyclonal, Rabbit,IgG
<b>Dilution :</b>	WB 1:500 - 1:2000. ELISA: 1:10000. Not yet tested in other applications.
<b>Purification :</b>	The antibody was affinity-purified from rabbit antiserum by affinity-chromatography using epitope-specific immunogen.

<b>Concentration :</b>	1 mg/ml
<b>Storage Stability :</b>	-15°C to -25°C/1 year(Do not lower than -25°C)
<b>Observed Band :</b>	100kD
<b>Background :</b>	cyclin and CBS domain divalent metal cation transport mediator 2(CNNM2) Homo sapiens This gene encodes a member of the ancient conserved domain containing protein family. Members of this protein family contain a cyclin box motif and have structural similarity to the cyclins. The encoded protein may play an important role in magnesium homeostasis by mediating the epithelial transport and renal reabsorption of Mg <sup>2+</sup> . Mutations in this gene are associated with renal hypomagnesemia. Alternatively spliced transcript variants encoding multiple isoforms have been observed for this gene. [provided by RefSeq, Dec 2011],
<b>Function :</b>	function:Divalent metal cation transporter. Mediates transport of divalent metal cations in an order of Mg(2+) > Co(2+) > Mn(2+) > Sr(2+) > Ba(2+) > Cu(2+) > Fe(2+).,miscellaneous:Shares weak sequence similarity with the cyclin family, explaining its name. However it has no cyclin-like function in vivo.,similarity:Belongs to the ACDP family.,similarity:Contains 2 CBS domains.,tissue specificity:Widely expressed. Expressed at higher level in brain, kidney and placenta, while it is weakly expressed in skeletal muscle.,
<b>Subcellular Location :</b>	Cell membrane ; Multi-pass membrane protein .
<b>Expression :</b>	Widely expressed. Expressed at higher level in brain, kidney and placenta, while it is weakly expressed in skeletal muscle. In the kidney, it is expressed in the distal convoluted tubule and the thick ascending limb of Henle loop.

## Products Images



Western Blot analysis of various cells using Cyclin M2 Polyclonal Antibody