

## CTRP8 Polyclonal Antibody

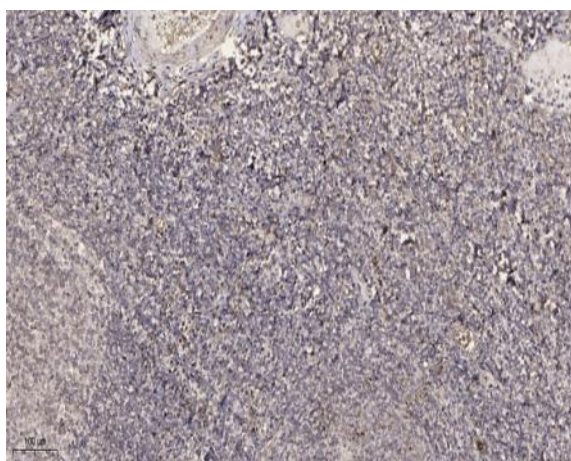
<b>Catalog No :</b>	YT1154
<b>Reactivity :</b>	Human
<b>Applications :</b>	IHC;IF;ELISA
<b>Target :</b>	CTRP8
<b>Gene Name :</b>	C1QTNF8
<b>Protein Name :</b>	Complement C1q tumor necrosis factor-related protein 8
<b>Human Gene Id :</b>	390664
<b>Human Swiss Prot No :</b>	P60827
<b>Immunogen :</b>	Synthesized peptide derived from the C-terminal region of human CTRP8.
<b>Specificity :</b>	CTRP8 Polyclonal Antibody detects endogenous levels of CTRP8 protein.
<b>Formulation :</b>	Liquid in PBS containing 50% glycerol, 0.5% BSA and 0.02% sodium azide.
<b>Source :</b>	Polyclonal, Rabbit,IgG
<b>Dilution :</b>	IHC 1:100 - 1:300. ELISA: 1:10000.. IF 1:50-200
<b>Purification :</b>	The antibody was affinity-purified from rabbit antiserum by affinity-chromatography using epitope-specific immunogen.
<b>Concentration :</b>	1 mg/ml
<b>Storage Stability :</b>	-15°C to -25°C/1 year(Do not lower than -25°C)
<b>Molecularweight :</b>	29kD
<b>Background :</b>	similarity:Contains 1 C1q domain.,similarity:Contains 1 collagen-like domain.,

---

<b>Function :</b>	<u>similarity:Contains 1 C1q domain.,similarity:Contains 1 collagen-like domain.,</u>
<b>Subcellular Location :</b>	<u>Secreted .</u>
<b>Expression :</b>	<u>Expressed predominantly in lung and testis (PubMed:19666007). Expressed in astrocytes (PubMed:24014093).</u>

---

## Products Images



Immunohistochemical analysis of paraffin-embedded human tonsil. 1, Antibody was diluted at 1:200(4° overnight). 2, Tris-EDTA,pH9.0 was used for antigen retrieval. 3,Secondary antibody was diluted at 1:200(room temperature, 30min).