

CTPS Polyclonal Antibody

Catalog No :	YT1153
Reactivity :	Human;Mouse;Rat
Applications :	WB;IHC;IF;ELISA
Target :	CTPS
Fields :	>>Pyrimidine metabolism;>>Metabolic pathways;>>Nucleotide metabolism;>>Biosynthesis of cofactors
Gene Name :	CTPS1
Protein Name :	CTP synthase 1
Human Gene Id :	1503
Human Swiss Prot No :	P17812
Mouse Gene Id :	51797
Mouse Swiss Prot No :	P70698
Immunogen :	The antiserum was produced against synthesized peptide derived from human CTPS. AA range:60-109
Specificity :	CTPS Polyclonal Antibody detects endogenous levels of CTPS protein.
Formulation :	Liquid in PBS containing 50% glycerol, 0.5% BSA and 0.02% sodium azide.
Source :	Polyclonal, Rabbit,IgG
Dilution :	WB 1:500 - 1:2000. IHC 1:100 - 1:300. ELISA: 1:10000.. IF 1:50-200
Purification :	The antibody was affinity-purified from rabbit antiserum by affinity-chromatography using epitope-specific immunogen.
Concentration :	1 mg/ml

Storage Stability : -15°C to -25°C/1 year(Do not lower than -25°C)

Observed Band : 67kD

Cell Pathway : Pyrimidine metabolism;

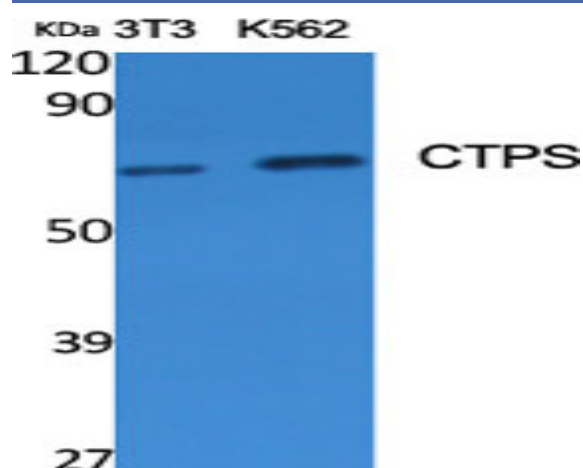
Background : This gene encodes an enzyme responsible for the catalytic conversion of UTP (uridine triphosphate) to CTP (cytidine triphosphate). This reaction is an important step in the biosynthesis of phospholipids and nucleic acids. Activity of this protein is important in the immune system, and loss of function of this gene has been associated with immunodeficiency. Alternative splicing results in multiple transcript variants. [provided by RefSeq, Jul 2014],

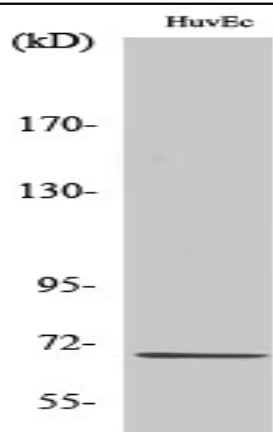
Function : catalytic activity:ATP + UTP + NH(3) = ADP + phosphate + CTP.,enzyme regulation:Activated by GTP and inhibited by CTP.,function:Catalyzes the ATP-dependent amination of UTP to CTP with either L-glutamine or ammonia as the source of nitrogen.,pathway:Pyrimidine metabolism; CTP biosynthesis via de novo pathway; CTP from UDP: step 2/2.,similarity:Belongs to the CTP synthase family.,similarity:Contains 1 glutamine amidotransferase type-1 domain.,

Subcellular Location : Cytoplasm, cytosol . Mainly cytosolic but when active detected in long filamentous structures (PubMed:25223282). Co-localizes with TNK2 in the cytosolic filaments (By similarity). .

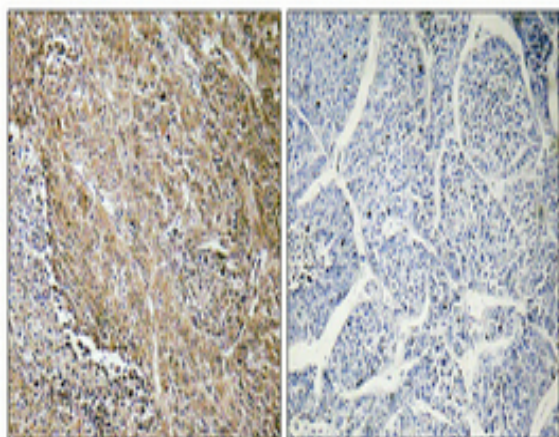
Expression : Widely expressed.

Products Images

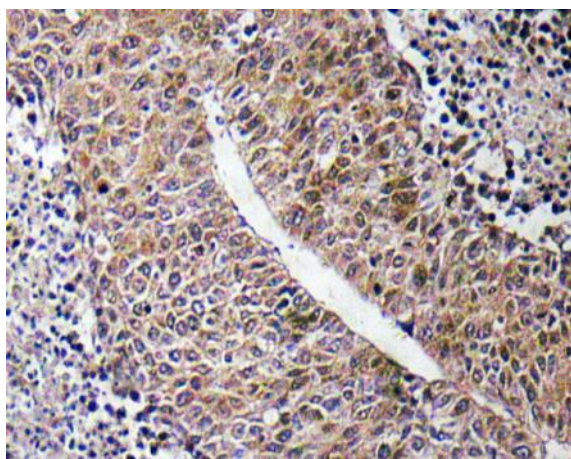




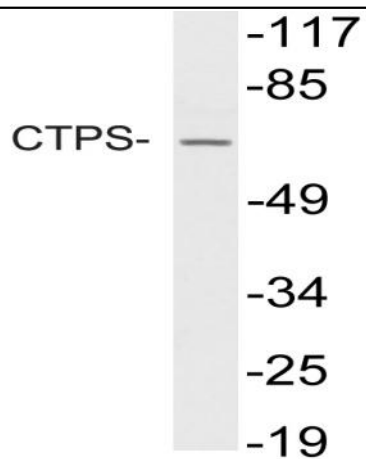
Western Blot analysis of HuvEc cells using CTPS Polyclonal Antibody diluted at 1:500



Immunohistochemical analysis of paraffin-embedded Human lung cancer. Antibody was diluted at 1:100(4° overnight). High-pressure and temperature Tris-EDTA,pH8.0 was used for antigen retrieval. Negative control (right) obtained from antibody was pre-absorbed by immunogen peptide.



Immunohistochemistry analysis of CTPS antibody in paraffin-embedded human liver carcinoma tissue.



Western blot analysis of lysate from HUVEC cells, using CTPS antibody.