

CSGlcA-T Polyclonal Antibody

Catalog No :	YT1130
Reactivity :	Human
Applications :	WB;IHC;IF;ELISA
Target :	CSGlcA-T
Fields :	>>Glycosaminoglycan biosynthesis - chondroitin sulfate / dermatan sulfate;>>Metabolic pathways
Gene Name :	CHPF2
Protein Name :	Chondroitin sulfate glucuronyltransferase
Human Gene Id :	54480
Human Swiss Prot No :	Q9P2E5
Immunogen :	The antiserum was produced against synthesized peptide derived from human CSGLCAT. AA range:31-80
Specificity :	CSGlcA-T Polyclonal Antibody detects endogenous levels of CSGlcA-T protein.
Formulation :	Liquid in PBS containing 50% glycerol, 0.5% BSA and 0.02% sodium azide.
Source :	Polyclonal, Rabbit,IgG
Dilution :	WB 1:500 - 1:2000. IHC 1:100 - 1:300. ELISA: 1:40000.. IF 1:50-200
Purification :	The antibody was affinity-purified from rabbit antiserum by affinity-chromatography using epitope-specific immunogen.
Concentration :	1 mg/ml
Storage Stability :	-15°C to -25°C/1 year(Do not lower than -25°C)
Observed Band :	86kD

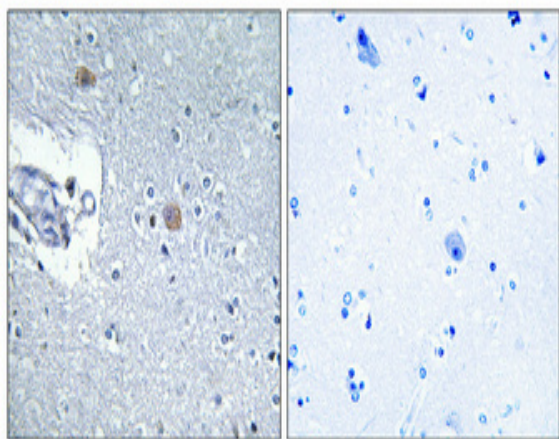
Cell Pathway : Chondroitin sulfate biosynthesis;

Background : CHPF2 (Chondroitin Polymerizing Factor 2) is a Protein Coding gene. Among its related pathways are Defective B3GAT3 causes JDSSDHD and Metabolism. GO annotations related to this gene include transferase activity, transferring glycosyl groups and N-acetylgalactosaminyl-proteoglycan 3-beta-glucuronosyltransferase activity. An important paralog of this gene is B4GALNT4.

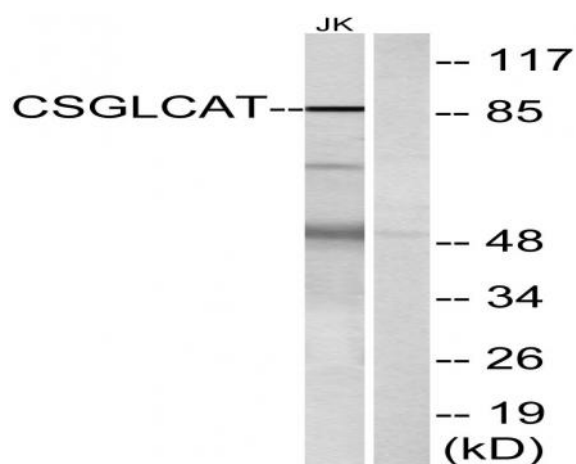
Subcellular Location : Golgi apparatus, Golgi stack membrane ; Single-pass type II membrane protein .

Expression : Ubiquitous. Highly expressed in placenta, small intestine and pancreas.

Products Images



Immunohistochemical analysis of paraffin-embedded Human brain. Antibody was diluted at 1:100(4° overnight). High-pressure and temperature Tris-EDTA,pH8.0 was used for antigen retrieval. Negative control (right) obtained from antibody was pre-absorbed by immunogen peptide.



Western blot analysis of lysates from Jurkat cells, using CSGLCAT Antibody. The lane on the right is blocked with the synthesized peptide.