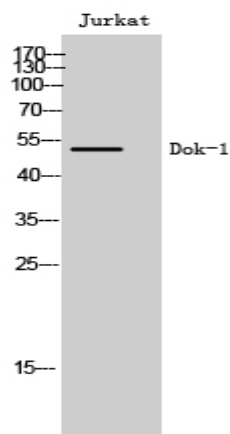


## Dok-1 Polyclonal Antibody

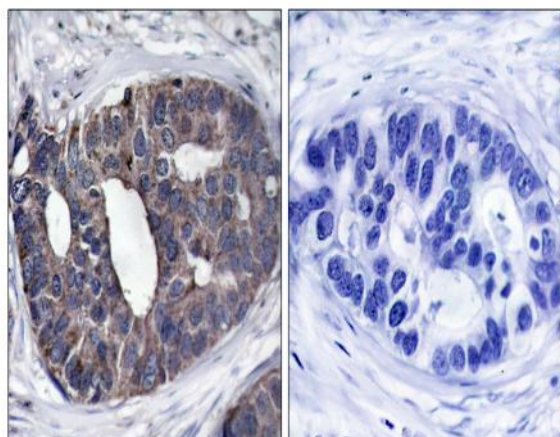
<b>Catalog No :</b>	YT1393
<b>Reactivity :</b>	Human;Mouse;Rat
<b>Applications :</b>	WB;IHC;IF;ELISA
<b>Target :</b>	p62 Dok
<b>Gene Name :</b>	DOK1
<b>Protein Name :</b>	Docking protein 1
<b>Human Gene Id :</b>	1796
<b>Human Swiss Prot No :</b>	Q99704
<b>Mouse Gene Id :</b>	13448
<b>Mouse Swiss Prot No :</b>	P97465
<b>Rat Gene Id :</b>	312477
<b>Rat Swiss Prot No :</b>	Q4QQV2
<b>Immunogen :</b>	The antiserum was produced against synthesized peptide derived from human p62 Dok. AA range:329-378
<b>Specificity :</b>	Dok-1 Polyclonal Antibody detects endogenous levels of Dok-1 protein.
<b>Formulation :</b>	Liquid in PBS containing 50% glycerol, 0.5% BSA and 0.02% sodium azide.
<b>Source :</b>	Polyclonal, Rabbit,IgG
<b>Dilution :</b>	WB 1:500 - 1:2000. IHC 1:100 - 1:300. IF 1:200 - 1:1000. ELISA: 1:5000. Not yet tested in other applications.
<b>Purification :</b>	The antibody was affinity-purified from rabbit antiserum by affinity-chromatography using epitope-specific immunogen.

<b>Concentration :</b>	<u>1 mg/ml</u>
<b>Storage Stability :</b>	<u>-15°C to -25°C/1 year(Do not lower than -25°C)</u>
<b>Observed Band :</b>	<u>52kD</u>
<b>Cell Pathway :</b>	<u>B_Cell_Antigen</u>
<b>Background :</b>	<u>docking protein 1(DOK1) Homo sapiens The protein encoded by this gene is part of a signal transduction pathway downstream of receptor tyrosine kinases. The encoded protein is a scaffold protein that helps form a platform for the assembly of multiprotein signaling complexes. Several transcript variants encoding different isoforms have been found for this gene. [provided by RefSeq, Jan 2016],</u>
<b>Function :</b>	<u>domain:The PTB domain mediates receptor interaction.,function:DOK proteins are enzymatically inert adaptor or scaffolding proteins. They provide a docking platform for the assembly of multimolecular signaling complexes. DOK1 appears to be a negative regulator of the insulin signaling pathway. Modulates integrin activation by competing with talin for the same binding site on ITGB3.,PTM:Constitutively tyrosine-phosphorylated.,PTM:Phosphorylated on tyrosine residues by the insulin receptor kinase. Results in the negative regulation of the insulin signaling pathway.,similarity:Belongs to the DOK family. Type A subfamily.,similarity:Contains 1 IRS-type PTB domain.,similarity:Contains 1 PH domain.,subunit:Interacts with ABL (By similarity). Interacts with RasGAP and INPP5D/SHIP1. Interacts directly with phosphorylated ITGB3.,tissue specificity:Expressed in pancreas, heart, leukocyte and spleen</u>
<b>Subcellular Location :</b>	<u>[Isoform 1]: Cytoplasm. Nucleus.; [Isoform 3]: Cytoplasm, perinuclear region.</u>
<b>Expression :</b>	<u>Expressed in pancreas, heart, leukocyte and spleen. Expressed in both resting and activated peripheral blood T-cells. Expressed in breast cancer.</u>

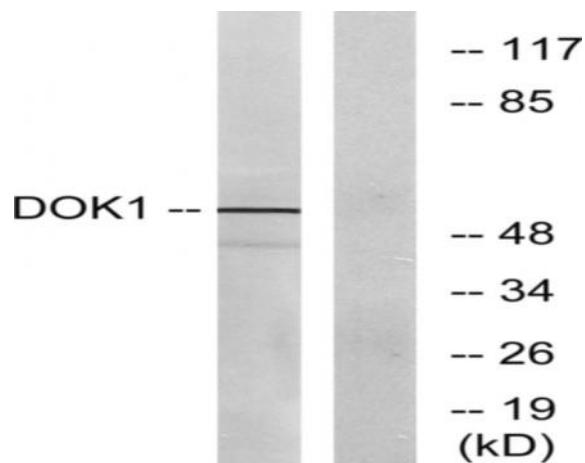
## Products Images



Western Blot analysis of Jurkat cells using Dok-1 Polyclonal Antibody



Immunohistochemistry analysis of paraffin-embedded human breast carcinoma tissue, using p62 Dok Antibody. The picture on the right is blocked with the synthesized peptide.



Western blot analysis of lysates from Jurkat cells, using p62 Dok Antibody. The lane on the right is blocked with the synthesized peptide.