

CRF Polyclonal Antibody

Catalog No :	YT1107
Reactivity :	Human;Rat;Mouse;
Applications :	IHC;IF;ELISA
Target :	CRF
Fields :	>>cAMP signaling pathway;>>Neuroactive ligand-receptor interaction;>>Long-term depression;>>Cushing syndrome;>>Alcoholism
Gene Name :	CRH
Protein Name :	Corticoliberin
Human Gene Id :	1392
Human Swiss Prot No :	P06850
Mouse Swiss Prot No :	Q8CIT0
Immunogen :	The antiserum was produced against synthesized peptide derived from human CRF. AA range:104-153
Specificity :	CRF Polyclonal Antibody detects endogenous levels of CRF protein.
Formulation :	Liquid in PBS containing 50% glycerol, 0.5% BSA and 0.02% sodium azide.
Source :	Polyclonal, Rabbit,IgG
Dilution :	IHC 1:100 - 1:300. ELISA: 1:10000.. IF 1:50-200
Purification :	The antibody was affinity-purified from rabbit antiserum by affinity-chromatography using epitope-specific immunogen.
Concentration :	1 mg/ml
Storage Stability :	-15°C to -25°C/1 year(Do not lower than -25°C)

Molecularweight : 21kD

Cell Pathway : Long-term depression;

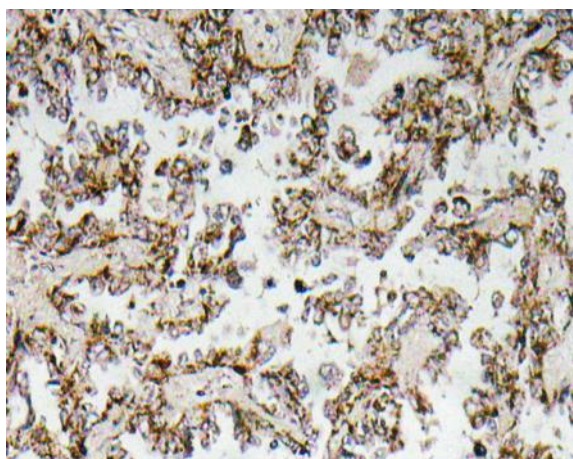
Background : This gene encodes a member of the corticotropin-releasing factor family. The encoded preproprotein is proteolytically processed to generate the mature neuropeptide hormone. In response to stress, this hormone is secreted by the paraventricular nucleus (PVN) of the hypothalamus, binds to corticotropin releasing hormone receptors and stimulates the release of adrenocorticotrophic hormone from the pituitary gland. Marked reduction in this protein has been observed in association with Alzheimer's disease. Autosomal recessive hypothalamic corticotropin deficiency has multiple and potentially fatal metabolic consequences including hypoglycemia and hepatitis. In addition to production in the hypothalamus, this protein is also synthesized in peripheral tissues, such as T lymphocytes, and is highly expressed in the placenta. In the placenta it is a marker that determines the length of gestation a

Function : function:This hormone from hypothalamus regulates the release of corticotropin from pituitary gland.,online information:Corticotropin-releasing hormone entry,similarity:Belongs to the sauvagine/corticotropin-releasing factor/urotensin I family.,

Subcellular Location : Secreted .

Expression : Produced by the hypothalamus and placenta.

Products Images



Immunohistochemistry analysis of CRF antibody in paraffin-embedded human lung carcinoma tissue.