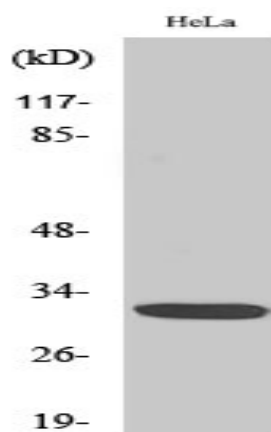


## Dlx-5 Polyclonal Antibody

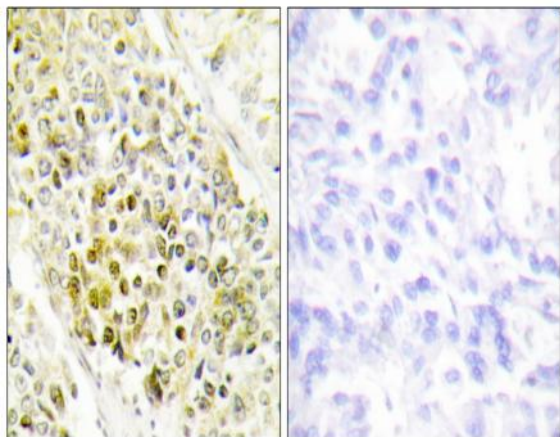
<b>Catalog No :</b>	YT1360
<b>Reactivity :</b>	Human;Mouse;Rat
<b>Applications :</b>	WB;IHC;IF;ELISA
<b>Target :</b>	Dlx-5
<b>Fields :</b>	>>Signaling pathways regulating pluripotency of stem cells
<b>Gene Name :</b>	DLX5
<b>Protein Name :</b>	Homeobox protein DLX-5
<b>Human Gene Id :</b>	1749
<b>Human Swiss Prot No :</b>	P56178
<b>Mouse Gene Id :</b>	13395
<b>Mouse Swiss Prot No :</b>	P70396
<b>Rat Gene Id :</b>	25431
<b>Rat Swiss Prot No :</b>	P50575
<b>Immunogen :</b>	The antiserum was produced against synthesized peptide derived from human DLX5. AA range:91-140
<b>Specificity :</b>	Dlx-5 Polyclonal Antibody detects endogenous levels of Dlx-5 protein.
<b>Formulation :</b>	Liquid in PBS containing 50% glycerol, 0.5% BSA and 0.02% sodium azide.
<b>Source :</b>	Polyclonal, Rabbit,IgG
<b>Dilution :</b>	WB 1:500 - 1:2000. IHC 1:100 - 1:300. IF 1:200 - 1:1000. ELISA: 1:40000. Not yet tested in other applications.

<b>Purification :</b>	The antibody was affinity-purified from rabbit antiserum by affinity-chromatography using epitope-specific immunogen.
<b>Concentration :</b>	1 mg/ml
<b>Storage Stability :</b>	-15°C to -25°C/1 year(Do not lower than -25°C)
<b>Observed Band :</b>	27kD
<b>Background :</b>	This gene encodes a member of a homeobox transcription factor gene family similar to the Drosophila distal-less gene. The encoded protein may play a role in bone development and fracture healing. Mutation in this gene, which is located in a tail-to-tail configuration with another member of the family on the long arm of chromosome 7, may be associated with split-hand/split-foot malformation. [provided by RefSeq, Jul 2008],
<b>Function :</b>	developmental stage:First expressed in embryos at 8.5-9 days in facial and branchial arch mesenchyme, otic vesicles and frontonasal ectoderm around olfactory placodes, a day later expression is seen in the developing forebrain in primordia of the ganglionic eminence and ventral diencephalic regions. In day 12.5 embryos, expressed in the brain and bones, and also in all skeletal structures of midgestation embryos after the first cartilage formation. Expression remains unaltered in both brain and skeleton in day 15 embryos and slowly decreases in day 17 embryos.,similarity:Belongs to the distal-less homeobox family.,similarity:Contains 1 homeobox DNA-binding domain.,subunit:Interacts with G22P1 (Ku70),
<b>Subcellular Location :</b>	Nucleus .
<b>Expression :</b>	Embryo,Lung,Osteoblast,Placenta,

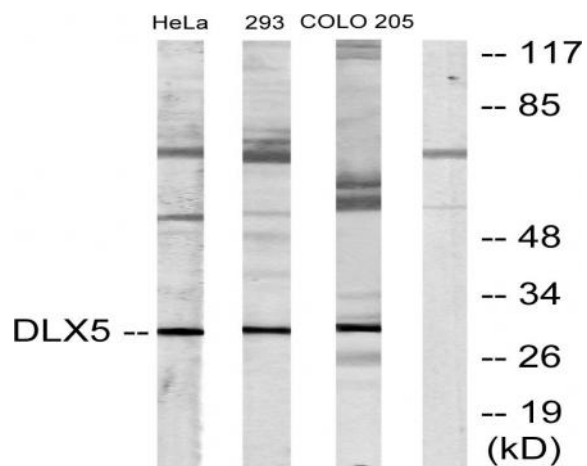
## Products Images



Western Blot analysis of various cells using Dlx-5 Polyclonal Antibody diluted at 1:500



Immunohistochemistry analysis of paraffin-embedded human lung carcinoma tissue, using DLX5 Antibody. The picture on the right is blocked with the synthesized peptide.



Western blot analysis of lysates from HeLa, 293, and COLO205 cells, using DLX5 Antibody. The lane on the right is blocked with the synthesized peptide.