

**DHRS1 Polyclonal Antibody**

<b>Catalog No :</b>	YT1346
<b>Reactivity :</b>	Human;Mouse;Rat
<b>Applications :</b>	IHC;IF;ELISA
<b>Target :</b>	DHRS1
<b>Gene Name :</b>	DHRS1
<b>Protein Name :</b>	Dehydrogenase/reductase SDR family member 1
<b>Human Gene Id :</b>	115817
<b>Human Swiss Prot No :</b>	Q96LJ7
<b>Mouse Gene Id :</b>	52585
<b>Mouse Swiss Prot No :</b>	Q99L04
<b>Immunogen :</b>	Synthesized peptide derived from the Internal region of human DHRS1.
<b>Specificity :</b>	DHRS1 Polyclonal Antibody detects endogenous levels of DHRS1 protein.
<b>Formulation :</b>	Liquid in PBS containing 50% glycerol, 0.5% BSA and 0.02% sodium azide.
<b>Source :</b>	Polyclonal, Rabbit,IgG
<b>Dilution :</b>	IHC 1:100 - 1:300. ELISA: 1:20000.. IF 1:50-200
<b>Purification :</b>	The antibody was affinity-purified from rabbit antiserum by affinity-chromatography using epitope-specific immunogen.
<b>Concentration :</b>	1 mg/ml
<b>Storage Stability :</b>	-15°C to -25°C/1 year(Do not lower than -25°C)

**Molecularweight :** 34kD

---

**Background :** This gene encodes a member of the short-chain dehydrogenases/reductases (SDR) family. The encoded enzyme contains a conserved catalytic domain and likely functions as an oxidoreductase. Multiple alternatively spliced variants, encoding the same protein, have been identified. [provided by RefSeq, Nov 2008],

---

**Function :** similarity:Belongs to the short-chain dehydrogenases/reductases (SDR) family.,tissue specificity:Detected in heart and liver, and at low levels in skeletal muscle, kidney and pancreas.,

---

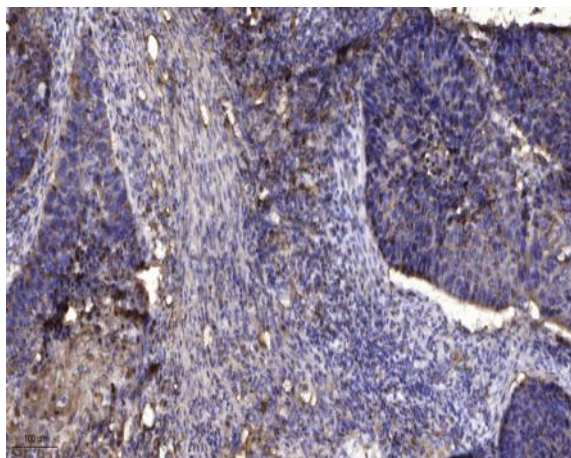
**Subcellular Location :** Endoplasmic reticulum . May be attached to the ER membrane by its C-terminus segment. .

---

**Expression :** Detected in heart, liver, adrenal glands, and at low levels in skeletal muscle, kidney, pancreas and brain.

---

## Products Images



Immunohistochemical analysis of paraffin-embedded human Squamous cell carcinoma of lung. 1, Antibody was diluted at 1:200(4° overnight). 2, Tris-EDTA,pH9.0 was used for antigen retrieval. 3,Secondary antibody was diluted at 1:200(room temperature, 45min).