

Copine 8 Polyclonal Antibody

Catalog No :	YT1060
Reactivity :	Human;Mouse;Rat
Applications :	WB;IHC;IF;ELISA
Target :	Copine 8
Gene Name :	CPNE8
Protein Name :	Copine-8
Human Gene Id :	144402
Human Swiss Prot No :	Q86YQ8
Mouse Gene Id :	66871
Mouse Swiss Prot No :	Q9DC53
Immunogen :	The antiserum was produced against synthesized peptide derived from human CPNE8. AA range:11-60
Specificity :	Copine 8 Polyclonal Antibody detects endogenous levels of Copine 8 protein.
Formulation :	Liquid in PBS containing 50% glycerol, 0.5% BSA and 0.02% sodium azide.
Source :	Polyclonal, Rabbit,IgG
Dilution :	WB 1:500 - 1:2000. IHC 1:100 - 1:300. ELISA: 1:40000.. IF 1:50-200
Purification :	The antibody was affinity-purified from rabbit antiserum by affinity-chromatography using epitope-specific immunogen.
Concentration :	1 mg/ml
Storage Stability :	-15°C to -25°C/1 year(Do not lower than -25°C)

Observed Band : 65kD

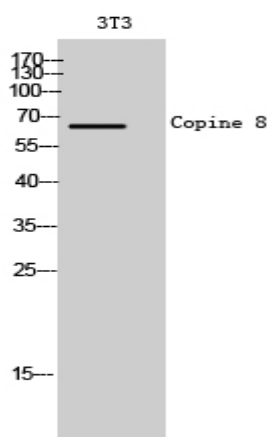
Background : copine 8(CPNE8) Homo sapiens Calcium-dependent membrane-binding proteins may regulate molecular events at the interface of the cell membrane and cytoplasm. This gene is one of several genes that encode a calcium-dependent protein containing two N-terminal type II C2 domains and an integrin A domain-like sequence in the C-terminus. [provided by RefSeq, Jul 2008],

Function : function:May function in membrane trafficking. Exhibits calcium-dependent phospholipid binding properties.,PTM:Phosphorylated upon DNA damage, probably by ATM or ATR.,similarity:Belongs to the copine family.,similarity:Contains 1 VWFA domain.,similarity:Contains 2 C2 domains.,

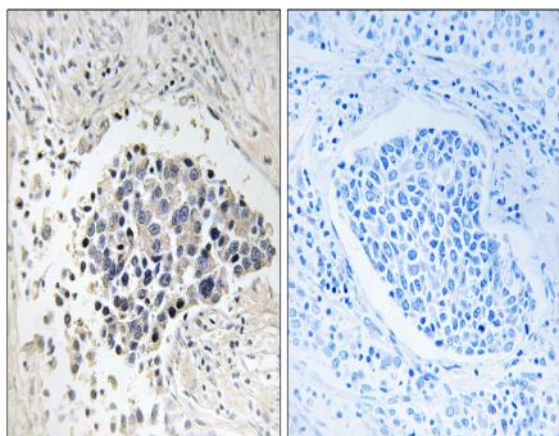
Subcellular Location : extracellular exosome,

Expression : Brain,Hippocampus,

Products Images



Western Blot analysis of 3T3 cells using Copine 8 Polyclonal Antibody



Immunohistochemistry analysis of paraffin-embedded human lung carcinoma tissue, using CPNE8 Antibody. The picture on the right is blocked with the synthesized peptide.