

## Connexin 46 Polyclonal Antibody

<b>Catalog No :</b>	YT1048
<b>Reactivity :</b>	Human;Mouse;Rat
<b>Applications :</b>	IHC;IF;ELISA
<b>Target :</b>	Connexin 46
<b>Gene Name :</b>	GJA3
<b>Protein Name :</b>	Gap junction alpha-3 protein
<b>Human Gene Id :</b>	2700
<b>Human Swiss Prot No :</b>	Q9Y6H8
<b>Mouse Gene Id :</b>	14611
<b>Mouse Swiss Prot No :</b>	Q64448
<b>Rat Gene Id :</b>	79217
<b>Rat Swiss Prot No :</b>	P29414
<b>Immunogen :</b>	The antiserum was produced against synthesized peptide derived from human GJA3. AA range:151-200
<b>Specificity :</b>	Connexin 46 Polyclonal Antibody detects endogenous levels of Connexin 46 protein.
<b>Formulation :</b>	Liquid in PBS containing 50% glycerol, 0.5% BSA and 0.02% sodium azide.
<b>Source :</b>	Polyclonal, Rabbit,IgG
<b>Dilution :</b>	IHC 1:100-500;IF ICC 1:100-500;ELISA 1:5000-20000
<b>Purification :</b>	The antibody was affinity-purified from rabbit antiserum by affinity-chromatography using epitope-specific immunogen.

**Concentration :** 1 mg/ml

**Storage Stability :** -15°C to -25°C/1 year(Do not lower than -25°C)

**Molecularweight :** 47kD

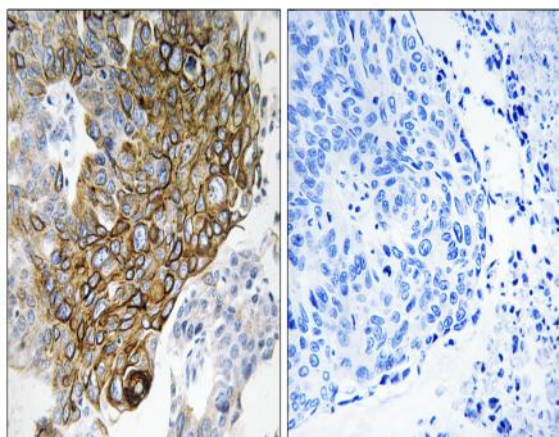
**Background :** The protein encoded by this gene is a connexin and is a component of lens fiber gap junctions. Defects in this gene are a cause of zonular pulverulent cataract type 3 (CZP3). [provided by RefSeq, Jan 2010],

**Function :** disease:Defects in GJA3 are the cause of zonular pulverulent cataract type 3 (CZP3) [MIM:601885]. CZP3 is a form of autosomal dominant congenital cataract.,function:One gap junction consists of a cluster of closely packed pairs of transmembrane channels, the connexons, through which materials of low MW diffuse from one cell to a neighboring cell.,similarity:Belongs to the connexin family. Alpha-type (group II) subfamily.,subunit:A connexon is composed of a hexamer of connexins. This particular connexin is a component of lens fiber gap junctions, can form both junctional and non-junctional ("hemi-") channels.,

**Subcellular Location :** Cell membrane ; Multi-pass membrane protein . Cell junction, gap junction .

**Expression :** Lens fibers,

## Products Images



Immunohistochemistry analysis of paraffin-embedded human lung carcinoma tissue, using GJA3 Antibody. The picture on the right is blocked with the synthesized peptide.