

## Connexin 25 Polyclonal Antibody

<b>Catalog No :</b>	YT1041
<b>Reactivity :</b>	Human
<b>Applications :</b>	WB;ELISA
<b>Target :</b>	Connexin 25
<b>Gene Name :</b>	GJB7
<b>Protein Name :</b>	Gap junction beta-7 protein
<b>Human Gene Id :</b>	375519
<b>Human Swiss Prot No :</b>	Q6PEY0
<b>Immunogen :</b>	The antiserum was produced against synthesized peptide derived from human GJB7. AA range:21-70
<b>Specificity :</b>	Connexin 25 Polyclonal Antibody detects endogenous levels of Connexin 25 protein.
<b>Formulation :</b>	Liquid in PBS containing 50% glycerol, 0.5% BSA and 0.02% sodium azide.
<b>Source :</b>	Polyclonal, Rabbit,IgG
<b>Dilution :</b>	WB 1:500 - 1:2000. ELISA: 1:10000. Not yet tested in other applications.
<b>Purification :</b>	The antibody was affinity-purified from rabbit antiserum by affinity-chromatography using epitope-specific immunogen.
<b>Concentration :</b>	1 mg/ml
<b>Storage Stability :</b>	-15°C to -25°C/1 year(Do not lower than -25°C)
<b>Observed Band :</b>	24kD
<b>Background :</b>	Connexins, such as GJB7, are involved in the formation of gap junctions,

intercellular conduits that directly connect the cytoplasm of contacting cells. Each gap junction channel is formed by docking of 2 hemichannels, each of which contains 6 connexin subunits (Sohl et al., 2003 [PubMed 12881038]). [supplied by OMIM, Mar 2008],

**Function :**

function: One gap junction consists of a cluster of closely packed pairs of transmembrane channels, the connexons, through which materials of low MW diffuse from one cell to a neighboring cell., similarity: Belongs to the connexin family. Beta-type (group I) subfamily., subunit: A connexon is composed of a hexamer of connexins., tissue specificity: Weakly expressed in placenta.,

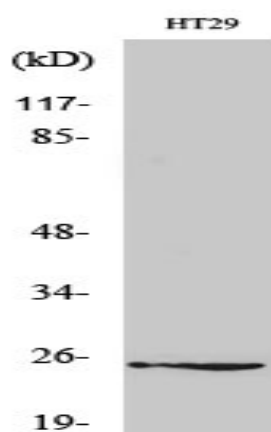
**Subcellular Location :**

Cell membrane ; Multi-pass membrane protein . Cell junction, gap junction .

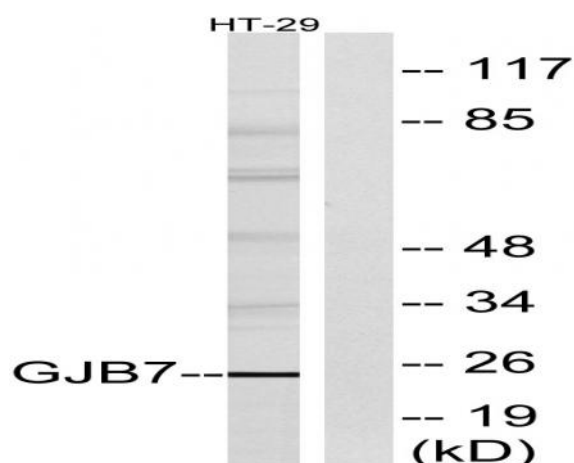
**Expression :**

Weakly expressed in placenta.

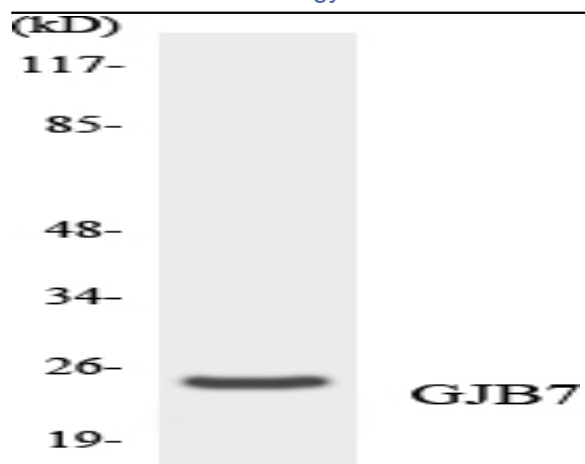
## Products Images



Western Blot analysis of various cells using Connexin 25 Polyclonal Antibody diluted at 1:500



Western blot analysis of lysates from HT-29 cells, using GJB7 Antibody. The lane on the right is blocked with the synthesized peptide.



Western blot analysis of the lysates from HeLa cells using GJB7 antibody.