

COL9A3 Polyclonal Antibody

| | |
|------------------------------|--|
| Catalog No : | YT1039 |
| Reactivity : | Human |
| Applications : | IHC;IF;ELISA |
| Target : | COL9A3 |
| Fields : | >>PI3K-Akt signaling pathway;>>Focal adhesion;>>ECM-receptor interaction;>>Protein digestion and absorption;>>Human papillomavirus infection |
| Gene Name : | COL9A3 |
| Protein Name : | Collagen alpha-3(IX) chain |
| Human Gene Id : | 1299 |
| Human Swiss Prot No : | Q14050 |
| Immunogen : | The antiserum was produced against synthesized peptide derived from human Collagen IX alpha3. AA range:321-370 |
| Specificity : | COL9A3 Polyclonal Antibody detects endogenous levels of COL9A3 protein. |
| Formulation : | Liquid in PBS containing 50% glycerol, 0.5% BSA and 0.02% sodium azide. |
| Source : | Polyclonal, Rabbit,IgG |
| Dilution : | IHC 1:100 - 1:300. IF 1:200 - 1:1000. ELISA: 1:10000. Not yet tested in other applications. |
| Purification : | The antibody was affinity-purified from rabbit antiserum by affinity-chromatography using epitope-specific immunogen. |
| Concentration : | 1 mg/ml |
| Storage Stability : | -15°C to -25°C/1 year(Do not lower than -25°C) |

Molecularweight : 64kD

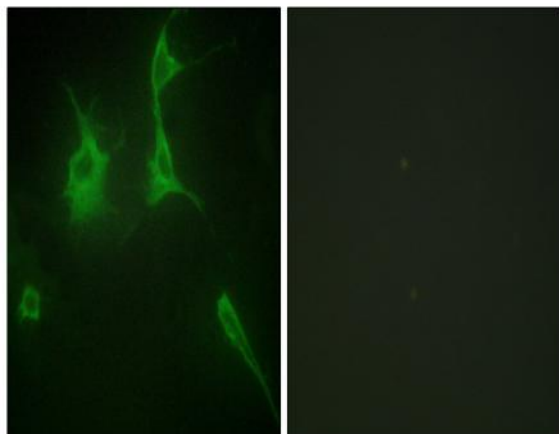
Background : This gene encodes one of the three alpha chains of type IX collagen, the major collagen component of hyaline cartilage. Type IX collagen, a heterotrimeric molecule, is usually found in tissues containing type II collagen, a fibrillar collagen. Mutations in this gene are associated with multiple epiphyseal dysplasia type 3. [provided by RefSeq, Jan 2010],

Function : disease:Defects in COL9A3 are the cause of multiple epiphyseal dysplasia type 3 (EDM3) [MIM:600969]; also known as multiple epiphyseal dysplasia with myopathy. EDM is a generalized skeletal dysplasia associated with significant morbidity. Joint pain, joint deformity, waddling gait, and short stature are the main clinical signs and symptoms. EDM is broadly categorized into the more severe Fairbank and the milder Ribbing types.,function:Structural component of hyaline cartilage and vitreous of the eye.,PTM:Covalently linked to the telopeptides of type II collagen by lysine-derived cross-links.,PTM:Prolines at the third position of the tripeptide repeating unit (G-X-Y) are hydroxylated in some or all of the chains.,similarity:Belongs to the fibril-associated collagens with interrupted helices (FACIT) family.,subunit:Heterotrimer of an alpha 1(IX), an alpha 2(IX) and an alpha 3(IX) chain.,

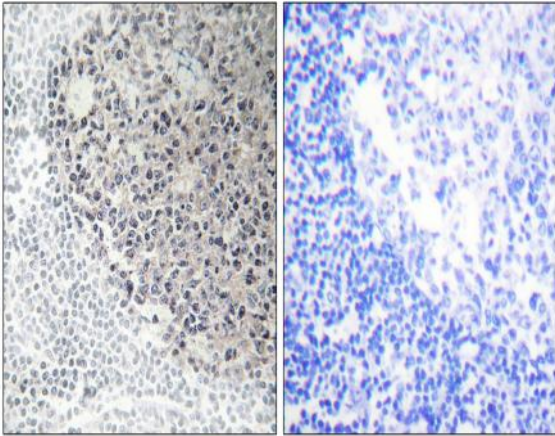
Subcellular Location : Secreted, extracellular space, extracellular matrix .

Expression : Cartilage,Pancreas,Placenta,Skin,

Products Images



Immunofluorescence analysis of NIH/3T3 cells, using Collagen IX alpha3 Antibody. The picture on the right is blocked with the synthesized peptide.



Immunohistochemistry analysis of paraffin-embedded human tonsil tissue, using Collagen IX alpha3 Antibody. The picture on the right is blocked with the synthesized peptide.