

COL25A1 Polyclonal Antibody

Catalog No :	YT1021
Reactivity :	Human;Mouse
Applications :	WB;IHC;IF;ELISA
Target :	COL25A1
Fields :	>>Protein digestion and absorption
Gene Name :	COL25A1
Protein Name :	Collagen alpha-1(XXV) chain
Human Gene Id :	84570
Human Swiss Prot No :	Q9BXS0
Mouse Gene Id :	77018
Mouse Swiss Prot No :	Q99MQ5
Immunogen :	The antiserum was produced against synthesized peptide derived from human Collagen XXV alpha1. AA range:101-150
Specificity :	COL25A1 Polyclonal Antibody detects endogenous levels of COL25A1 protein.
Formulation :	Liquid in PBS containing 50% glycerol, 0.5% BSA and 0.02% sodium azide.
Source :	Polyclonal, Rabbit,IgG
Dilution :	WB 1:500 - 1:2000. IHC 1:100 - 1:300. IF 1:200 - 1:1000. ELISA: 1:20000. Not yet tested in other applications.
Purification :	The antibody was affinity-purified from rabbit antiserum by affinity-chromatography using epitope-specific immunogen.
Concentration :	1 mg/ml

Storage Stability : -15°C to -25°C/1 year (Do not lower than -25°C)

Observed Band : 64kD

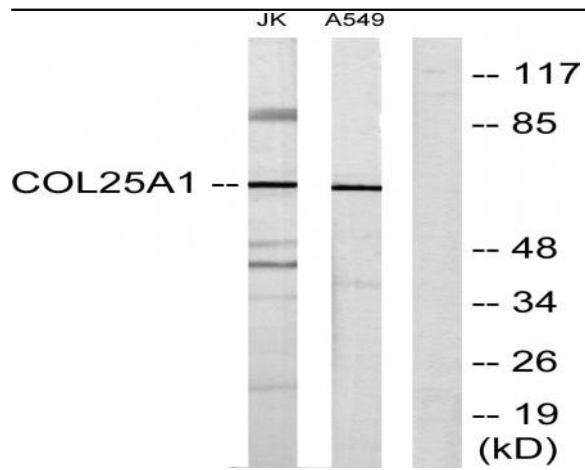
Background : This gene encodes a brain-specific membrane associated collagen. A product of proteolytic processing of the encoded protein, CLAC (collagenous Alzheimer amyloid plaque component), binds to amyloid beta-peptides found in Alzheimer amyloid plaques but CLAC inhibits rather than facilitates amyloid fibril elongation (PMID: 16300410). A study of over-expression of this collagen in mice, however, found changes in pathology and behavior suggesting that the encoded protein may promote amyloid plaque formation (PMID: 19548013). Multiple transcript variants encoding different isoforms have been found for this gene. [provided by RefSeq, Dec 2011],

Function : caution: The pyrrolidone carboxylic acid reported in PubMed:11927537 probably formed artifactually from Glu-113 during the extraction procedure in 70% formic acid. In PubMed:15522881, the protein was found to have unblocked Glu at the N-terminus.,function: Inhibits fibrillization of beta amyloid peptide during the elongation phase. Has also been shown to assemble amyloid fibrils into protease-resistant aggregates. Binds heparin.,PTM: Glycosylated.,PTM: Hydroxylated on 11% of proline residues and 49% of lysine residues.,PTM: Undergoes proteolytic cleavage by furin protease to yield the soluble collagen-like Alzheimer amyloid plaque component.,similarity: Contains 7 collagen-like domains.,subcellular location: After proteolytic cleavage, CLAC is secreted.,subunit: Forms homodimers and homotrimers. Binds to the fibrillized forms of beta amyloid peptide 40 (beta-APP40) and beta amyloid peptide 42 (b

Subcellular Location : Membrane ; Single-pass type II membrane protein . After proteolytic cleavage, CLAC is secreted.

Expression : Expressed predominantly in brain. Deposited preferentially in primitive or neuritic amyloid plaques which are typical of Alzheimer disease.

Products Images



Western blot analysis of lysates from Jurkat and A549 cells, using Collagen XXV alpha1 Antibody. The lane on the right is blocked with the synthesized peptide.