

## Cytokeratin 18 Polyclonal Antibody

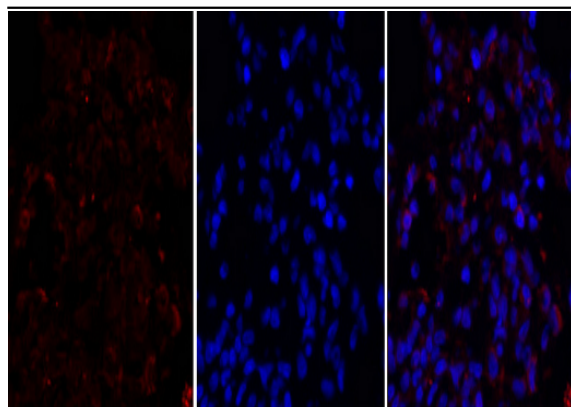
<b>Catalog No :</b>	YT1266
<b>Reactivity :</b>	Human;Mouse;Rat
<b>Applications :</b>	WB;IHC;IP;IF;ELISA
<b>Target :</b>	Cytokeratin 18
<b>Fields :</b>	>>Estrogen signaling pathway;>>Staphylococcus aureus infection
<b>Gene Name :</b>	KRT18
<b>Protein Name :</b>	Keratin type I cytoskeletal 18
<b>Human Gene Id :</b>	3875
<b>Human Swiss Prot No :</b>	P05783
<b>Mouse Gene Id :</b>	16668
<b>Mouse Swiss Prot No :</b>	P05784
<b>Rat Gene Id :</b>	294853
<b>Rat Swiss Prot No :</b>	Q5BJY9
<b>Immunogen :</b>	The antiserum was produced against synthesized peptide derived from human Keratin 18. AA range:1-50
<b>Specificity :</b>	Cytokeratin 18 Polyclonal Antibody detects endogenous levels of Cytokeratin 18 protein.
<b>Formulation :</b>	Liquid in PBS containing 50% glycerol, 0.5% BSA and 0.02% sodium azide.
<b>Source :</b>	Polyclonal, Rabbit,IgG
<b>Dilution :</b>	WB 1:500 - 1:2000. IHC 1:100 - 1:300. Immunoprecipitation: 2-5 ug:mg lysate. IF 1:200 - 1:1000. ELISA: 1:40000. Not yet tested in other applications.

---

<b>Purification :</b>	The antibody was affinity-purified from rabbit antiserum by affinity-chromatography using epitope-specific immunogen.
<b>Concentration :</b>	1 mg/ml
<b>Storage Stability :</b>	-15°C to -25°C/1 year(Do not lower than -25°C)
<b>Observed Band :</b>	47kD
<b>Cell Pathway :</b>	Pathogenic Escherichia coli infection;
<b>Background :</b>	KRT18 encodes the type I intermediate filament chain keratin 18. Keratin 18, together with its filament partner keratin 8, are perhaps the most commonly found members of the intermediate filament gene family. They are expressed in single layer epithelial tissues of the body. Mutations in this gene have been linked to cryptogenic cirrhosis. Two transcript variants encoding the same protein have been found for this gene. [provided by RefSeq, Jul 2008],
<b>Function :</b>	disease:Defects in KRT18 are a cause of cryptogenic cirrhosis [MIM:215600].,function:Involved in the uptake of thrombin-antithrombin complexes by hepatic cells (By similarity). When phosphorylated, plays a role in filament reorganization. Involved in the delivery of mutated CFTR to the plasma membrane. Together with KRT8, is involved in interleukin-6 (IL-6)-mediated barrier protection.,induction:By IL-6.,miscellaneous:There are two types of cytoskeletal and microfibrillar keratin: I (acidic; 40-55 kDa) and II (neutral to basic; 56-70 kDa).,PTM:O-glycosylated at multiple sites; glycans consist of single N-acetylglucosamine residues.,PTM:Phosphorylation at Ser-34 increases during mitosis. Hyperphosphorylated at Ser-53 in diseased cirrhosis liver. Phosphorylation increases by IL-6.,PTM:Proteolytically cleaved by caspases during epithelial cell apoptosis. Cleavage occurs at Asp-238 by either
<b>Subcellular Location :</b>	Cytoplasm, perinuclear region. Nucleus, nucleolus.
<b>Expression :</b>	Expressed in colon, placenta, liver and very weakly in exocervix. Increased expression observed in lymph nodes of breast carcinoma.

---

## Products Images

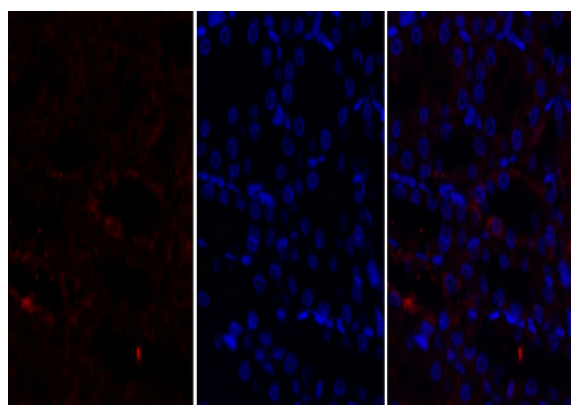


A

B

C

Immunofluorescence analysis of rat-lung tissue. 1, Cytokeratin 18 Polyclonal Antibody (red) was diluted at 1:200 (4 °C, overnight). 2, Cy3 labeled Secondary antibody was diluted at 1:300 (room temperature, 50 min). 3, Picture B: DAPI (blue) 10 min. Picture A: Target. Picture B: DAPI. Picture C: merge of A+B

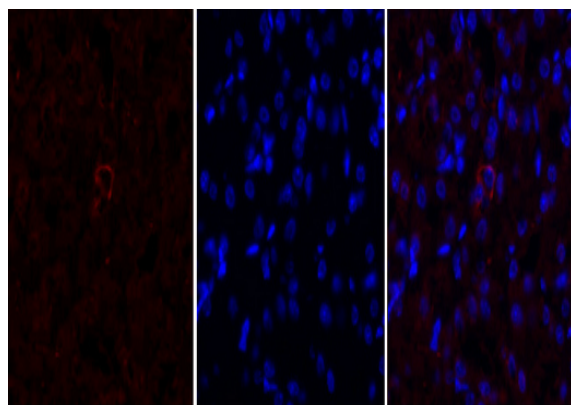


A

B

C

Immunofluorescence analysis of rat-kidney tissue. 1, Cytokeratin 18 Polyclonal Antibody (red) was diluted at 1:200 (4 °C, overnight). 2, Cy3 labeled Secondary antibody was diluted at 1:300 (room temperature, 50 min). 3, Picture B: DAPI (blue) 10 min. Picture A: Target. Picture B: DAPI. Picture C: merge of A+B

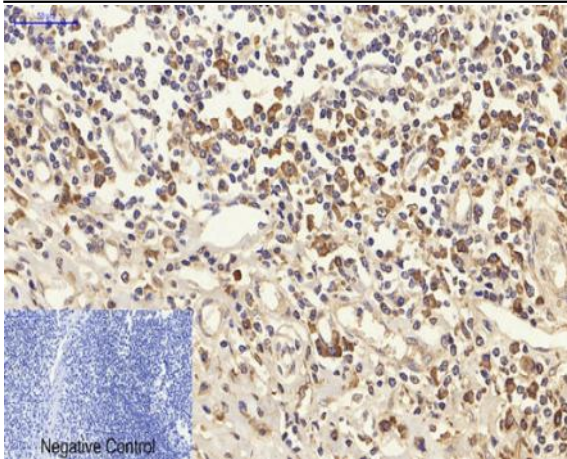


A

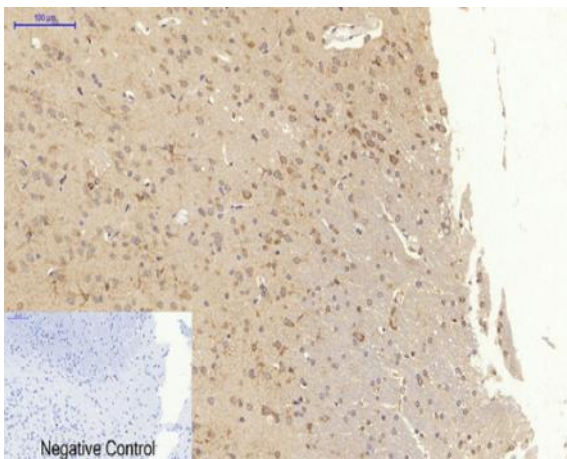
B

C

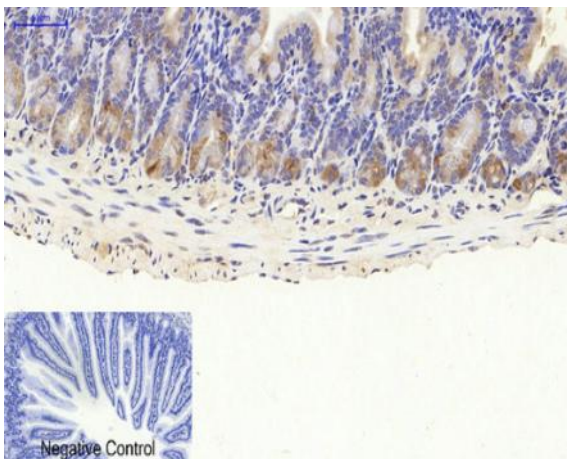
Immunofluorescence analysis of mouse-kidney tissue. 1, Cytokeratin 18 Polyclonal Antibody (red) was diluted at 1:200 (4 °C, overnight). 2, Cy3 labeled Secondary antibody was diluted at 1:300 (room temperature, 50 min). 3, Picture B: DAPI (blue) 10 min. Picture A: Target. Picture B: DAPI. Picture C: merge of A+B



Immunohistochemical analysis of paraffin-embedded Human-Tonsil tissue. 1, Cytokeratin 18 Polyclonal Antibody was diluted at 1:200 (4 °C, overnight). 2, Sodium citrate pH 6.0 was used for antibody retrieval (>98 °C, 20min). 3, Secondary antibody was diluted at 1:200 (room temperature, 30min). Negative control was used by secondary antibody only.



Immunohistochemical analysis of paraffin-embedded Rat-brain tissue. 1, Cytokeratin 18 Polyclonal Antibody was diluted at 1:200 (4 °C, overnight). 2, Sodium citrate pH 6.0 was used for antibody retrieval (>98 °C, 20min). 3, Secondary antibody was diluted at 1:200 (room temperature, 30min). Negative control was used by secondary antibody only.



Immunohistochemical analysis of paraffin-embedded Mouse-colon tissue. 1, Cytokeratin 18 Polyclonal Antibody was diluted at 1:200 (4 °C, overnight). 2, Sodium citrate pH 6.0 was used for antibody retrieval (>98 °C, 20min). 3, Secondary antibody was diluted at 1:200 (room temperature, 30min). Negative control was used by secondary antibody only.

Western Blot analysis of various cells using Cytokeratin 18  
Polyclonal Antibody diluted at 1:2000

