

Cytochrome b5 Polyclonal Antibody

Catalog No :	YT1257
Reactivity :	Human;Mouse;Rat
Applications :	WB;IHC;IF;ELISA
Target :	Cytochrome b5
Gene Name :	CYB5A
Protein Name :	Cytochrome b5
Human Gene Id :	1528
Human Swiss Prot No :	P00167
Mouse Gene Id :	109672
Mouse Swiss Prot No :	P56395
Rat Gene Id :	64001
Rat Swiss Prot No :	P00173
Immunogen :	The antiserum was produced against synthesized peptide derived from human CYB5. AA range:61-110
Specificity :	Cytochrome b5 Polyclonal Antibody detects endogenous levels of Cytochrome b5 protein.
Formulation :	Liquid in PBS containing 50% glycerol, 0.5% BSA and 0.02% sodium azide.
Source :	Polyclonal, Rabbit,IgG
Dilution :	WB 1:500 - 1:2000. IHC 1:100 - 1:300. IF 1:200 - 1:1000. ELISA: 1:5000. Not yet tested in other applications.
Purification :	The antibody was affinity-purified from rabbit antiserum by affinity-

chromatography using epitope-specific immunogen.

Concentration : 1 mg/ml

Storage Stability : -15°C to -25°C/1 year(Do not lower than -25°C)

Observed Band : 15kD

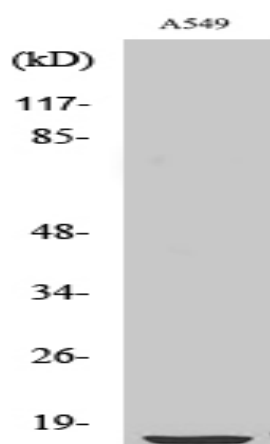
Background : The protein encoded by this gene is a membrane-bound cytochrome that reduces ferric hemoglobin (methemoglobin) to ferrous hemoglobin, which is required for stearyl-CoA-desaturase activity. Defects in this gene are a cause of type IV hereditary methemoglobinemia. Three transcript variants encoding different isoforms have been found for this gene. [provided by RefSeq, Jun 2010],

Function : disease:Defects in CYB5A are the cause of type IV hereditary methemoglobinemia [MIM:250790].,function:Cytochrome b5 is a membrane bound hemoprotein which function as an electron carrier for several membrane bound oxygenases.,similarity:Belongs to the cytochrome b5 family.,similarity:Contains 1 cytochrome b5 heme-binding domain.,

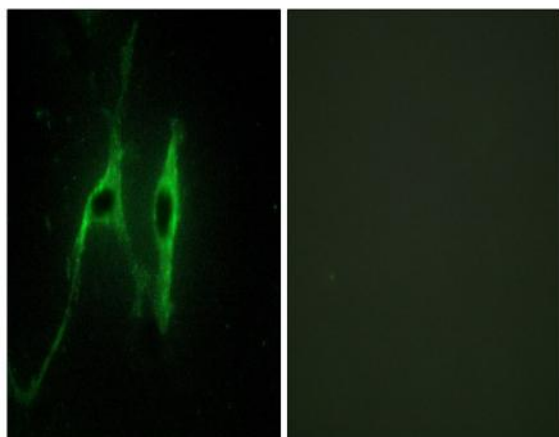
Subcellular Location : [Isoform 1]: Endoplasmic reticulum membrane; Single-pass membrane protein; Cytoplasmic side. Microsome membrane; Single-pass membrane protein; Cytoplasmic side.; [Isoform 2]: Cytoplasm.

Expression : Erythrocyte,Liver,Spleen,Uterus,

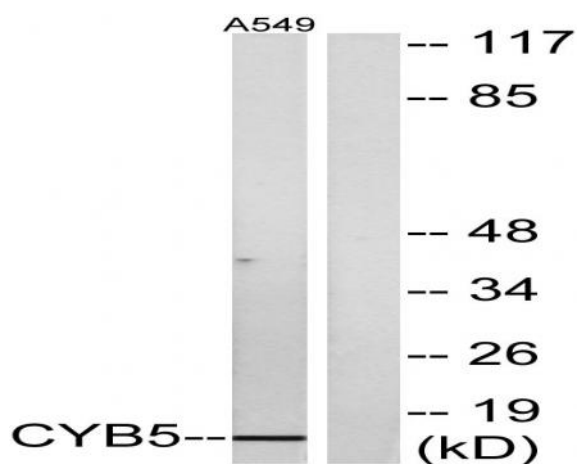
Products Images



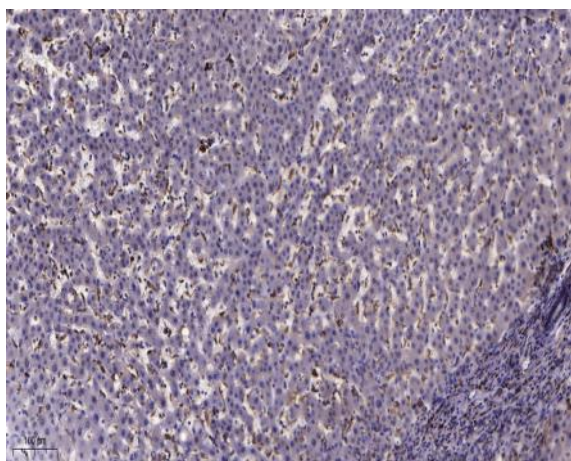
Western Blot analysis of various cells using Cytochrome b5 Polyclonal Antibody



Immunofluorescence analysis of NIH/3T3 cells, using CYB5 Antibody. The picture on the right is blocked with the synthesized peptide.



Western blot analysis of lysates from A549 cells, using CYB5 Antibody. The lane on the right is blocked with the synthesized peptide.



Immunohistochemical analysis of paraffin-embedded human liver cancer. 1, Antibody was diluted at 1:200(4° overnight). 2, Tris-EDTA,pH9.0 was used for antigen retrieval. 3,Secondary antibody was diluted at 1:200(room temperature, 45min).