

CYP4X1 Polyclonal Antibody

Catalog No :	YT1237
Reactivity :	Human;Rat;Mouse;
Applications :	WB;ELISA
Target :	CYP4X1
Fields :	>>Serotonergic synapse
Gene Name :	CYP4X1
Protein Name :	Cytochrome P450 4X1
Human Gene Id :	260293
Human Swiss Prot No :	Q8N118
Immunogen :	The antiserum was produced against synthesized peptide derived from human Cytochrome P450 4X1. AA range:231-280
Specificity :	CYP4X1 Polyclonal Antibody detects endogenous levels of CYP4X1 protein.
Formulation :	Liquid in PBS containing 50% glycerol, 0.5% BSA and 0.02% sodium azide.
Source :	Polyclonal, Rabbit,IgG
Dilution :	WB 1:500 - 1:2000. ELISA: 1:10000. Not yet tested in other applications.
Purification :	The antibody was affinity-purified from rabbit antiserum by affinity-chromatography using epitope-specific immunogen.
Concentration :	1 mg/ml
Storage Stability :	-15°C to -25°C/1 year(Do not lower than -25°C)
Observed Band :	60kD

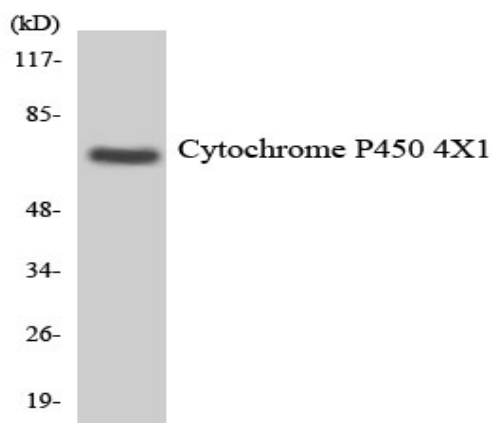
Background : This gene encodes a member of the cytochrome P450 superfamily of enzymes and is located within a cluster of genes belonging to this superfamily on chromosome 1. The cytochrome P450 proteins are monooxygenases which catalyze many reactions involved in drug metabolism and synthesis of cholesterol, steroids and other lipids. The expression pattern of a similar rat protein suggests that this protein may be involved in neurovascular function in the brain. Alternative splicing results in multiple transcript variants. [provided by RefSeq, Feb 2016],

Function : catalytic activity:RH + reduced flavoprotein + O(2) = ROH + oxidized flavoprotein + H(2)O.,cofactor:Heme group.,similarity:Belongs to the cytochrome P450 family.,

Subcellular Location : Endoplasmic reticulum membrane ; Single-pass membrane protein . Microsome membrane ; Single-pass membrane protein .

Expression : Expressed in brain, heart, kidney and skin and, at lower levels, in skeletal muscle and liver (PubMed:16478468, PubMed:18549450). In the brain, high levels are detected in amygdala and lower levels in globus pallidus and cerebellum (PubMed:18549450). In the heart, very high levels in aorta, but very low levels in other heart regions (PubMed:16478468, PubMed:18549450). Also expressed in breast, prostate and colon (PubMed:18549450).

Products Images



Western blot analysis of the lysates from HeLa cells using Cytochrome P450 4X1 antibody.