

Claudin-10 Polyclonal Antibody

Catalog No :	YT0944
Reactivity :	Human;Mouse;Rat
Applications :	WB;IHC;IF;ELISA
Target :	Claudin-10
Fields :	>>Cell adhesion molecules;>>Tight junction;>>Leukocyte transendothelial migration;>>Pathogenic Escherichia coli infection;>>Hepatitis C
Gene Name :	CLDN10
Protein Name :	Claudin-10
Human Gene Id :	9071
Human Swiss Prot No :	P78369
Immunogen :	The antiserum was produced against synthesized peptide derived from human Claudin 10. AA range:179-228
Specificity :	Claudin-10 Polyclonal Antibody detects endogenous levels of Claudin-10 protein.
Formulation :	Liquid in PBS containing 50% glycerol, 0.5% BSA and 0.02% sodium azide.
Source :	Polyclonal, Rabbit,IgG
Dilution :	WB 1:500 - 1:2000. IHC 1:100 - 1:300. IF 1:200 - 1:1000. ELISA: 1:10000. Not yet tested in other applications.
Purification :	The antibody was affinity-purified from rabbit antiserum by affinity-chromatography using epitope-specific immunogen.
Concentration :	1 mg/ml
Storage Stability :	-15°C to -25°C/1 year(Do not lower than -25°C)

Observed Band : 25kD

Cell Pathway : Cell adhesion molecules (CAMs);Tight junction;Leukocyte transendothelial migration;

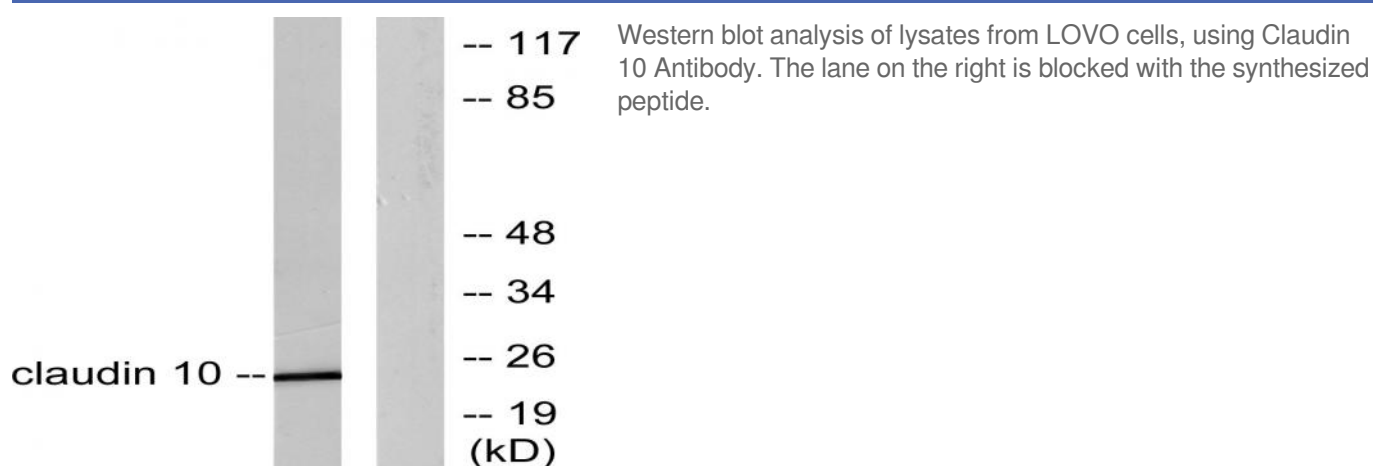
Background : This gene encodes a member of the claudin family. Claudins are integral membrane proteins and components of tight junction strands. Tight junction strands serve as a physical barrier to prevent solutes and water from passing freely through the paracellular space between epithelial or endothelial cell sheets, and also play critical roles in maintaining cell polarity and signal transductions. The expression level of this gene is associated with recurrence of primary hepatocellular carcinoma. Six alternatively spliced transcript variants encoding different isoforms have been reported, but the transcript sequences of some variants are not determined.[provided by RefSeq, Jun 2010],

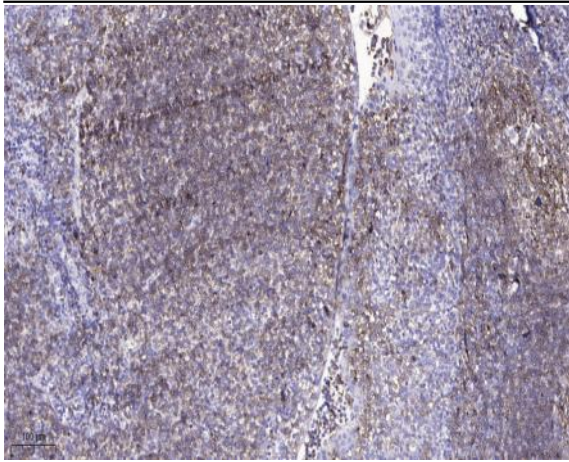
Function : function:Plays a major role in tight junction-specific obliteration of the intercellular space, through calcium-independent cell-adhesion activity.,similarity:Belongs to the claudin family.,

Subcellular Location : Cell junction, tight junction . Cell membrane ; Multi-pass membrane protein .

Expression : Expressed in the kidney, eccrine sweat glands and in all layers of the epidermis. In the kidney, it is detected in the thick ascending limb of Henle's loop (TAL) (PubMed:28771254, PubMed:28686597). In the sweat glands, it is expressed in cells from secretory portions, corresponding to the clear cells (PubMed:28686597).

Products Images





Immunohistochemical analysis of paraffin-embedded human tonsil. 1, Antibody was diluted at 1:200(4° overnight). 2, Tris-EDTA,pH9.0 was used for antigen retrieval. 3,Secondary antibody was diluted at 1:200(room temperature, 45min).