

CYP20A1 Polyclonal Antibody

Catalog No :	YT1194
Reactivity :	Human;Rat;Mouse;
Applications :	WB;ELISA
Target :	CYP20A1
Gene Name :	CYP20A1
Protein Name :	Cytochrome P450 20A1
Human Gene Id :	57404
Human Swiss Prot No :	Q6UW02
Mouse Swiss Prot No :	Q8BKE6
Immunogen :	The antiserum was produced against synthesized peptide derived from human Cytochrome P450 20A1. AA range:191-240
Specificity :	CYP20A1 Polyclonal Antibody detects endogenous levels of CYP20A1 protein.
Formulation :	Liquid in PBS containing 50% glycerol, 0.5% BSA and 0.02% sodium azide.
Source :	Polyclonal, Rabbit,IgG
Dilution :	WB 1:500 - 1:2000. ELISA: 1:40000. Not yet tested in other applications.
Purification :	The antibody was affinity-purified from rabbit antiserum by affinity-chromatography using epitope-specific immunogen.
Concentration :	1 mg/ml
Storage Stability :	-15°C to -25°C/1 year(Do not lower than -25°C)
Observed Band :	53kD

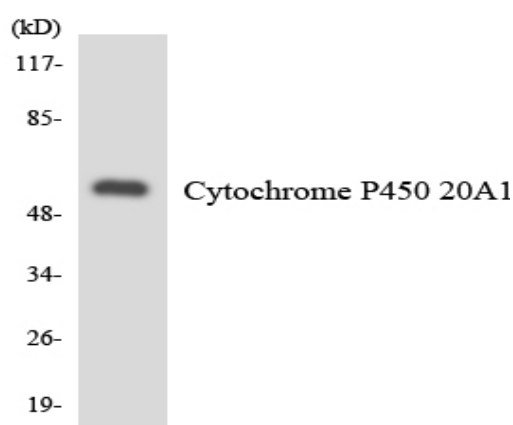
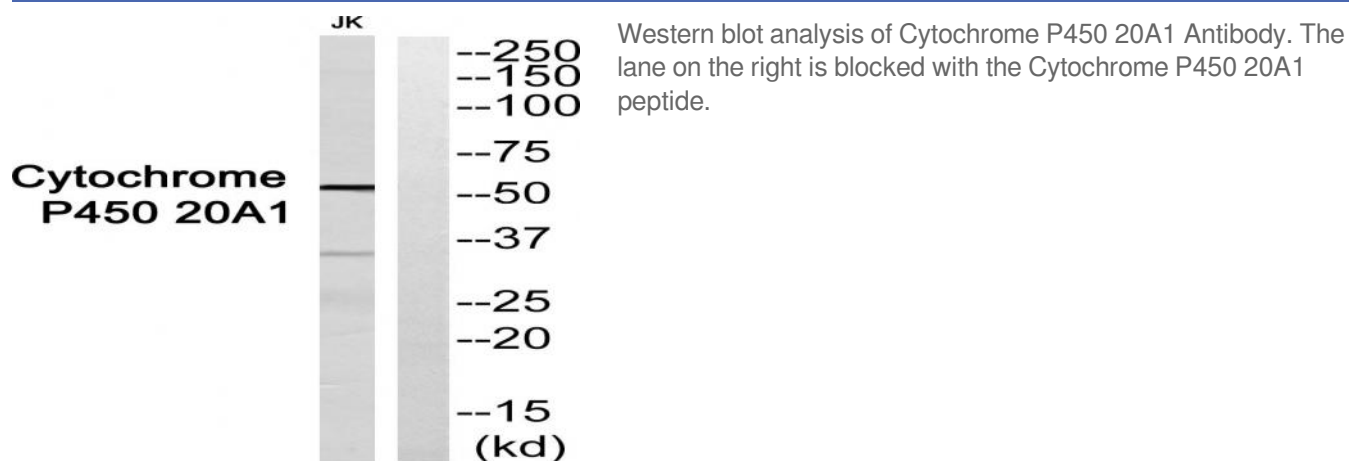
Background : cytochrome P450 family 20 subfamily A member 1 (CYP20A1) Homo sapiens
 This gene encodes a member of the cytochrome P450 superfamily of enzymes. The cytochrome P450 proteins are monooxygenases that catalyze many reactions involved in drug metabolism and synthesis of cholesterol, steroids and other lipids. This protein lacks one amino acid of the conserved heme binding site. It also lacks the conserved I-helix motif AGX(D,E)T, suggesting that its substrate may carry its own oxygen. [provided by RefSeq, Jul 2008],

Function : catalytic activity:RH + reduced flavoprotein + O(2) = ROH + oxidized flavoprotein + H(2)O.,cofactor:Heme group.,similarity:Belongs to the cytochrome P450 family.,

Subcellular Location : Membrane ; Single-pass membrane protein .

Expression : Blood,Lung,Pheochromocytoma,Placenta,Stomach,

Products Images



Western blot analysis of the lysates from HUVEC cells using Cytochrome P450 20A1 antibody.