

**CGREF1 Polyclonal Antibody**

<b>Catalog No :</b>	YT0893
<b>Reactivity :</b>	Human;Rat;Mouse;
<b>Applications :</b>	WB;IHC;IF;ELISA
<b>Target :</b>	CGREF1
<b>Gene Name :</b>	CGREF1
<b>Protein Name :</b>	Cell growth regulator with EF hand domain protein 1
<b>Human Gene Id :</b>	10669
<b>Human Swiss Prot No :</b>	Q99674
<b>Mouse Swiss Prot No :</b>	Q8R1U2
<b>Immunogen :</b>	The antiserum was produced against synthesized peptide derived from human CGREF1. AA range:241-290
<b>Specificity :</b>	CGREF1 Polyclonal Antibody detects endogenous levels of CGREF1 protein.
<b>Formulation :</b>	Liquid in PBS containing 50% glycerol, 0.5% BSA and 0.02% sodium azide.
<b>Source :</b>	Polyclonal, Rabbit,IgG
<b>Dilution :</b>	WB 1:500 - 1:2000. IHC 1:100 - 1:300. ELISA: 1:40000.. IF 1:50-200
<b>Purification :</b>	The antibody was affinity-purified from rabbit antiserum by affinity-chromatography using epitope-specific immunogen.
<b>Concentration :</b>	1 mg/ml
<b>Storage Stability :</b>	-15°C to -25°C/1 year(Do not lower than -25°C)
<b>Observed Band :</b>	31kD

**Background :**

caution:The sequence shown here is derived from an Ensembl automatic analysis pipeline and should be considered as preliminary data.,function:Able to inhibit growth in several cell lines.,induction:By p53.,similarity:Contains 2 EF-hand domains.,

**Function :**

caution:The sequence shown here is derived from an Ensembl automatic analysis pipeline and should be considered as preliminary data.,function:Able to inhibit growth in several cell lines.,induction:By p53.,similarity:Contains 2 EF-hand domains.,

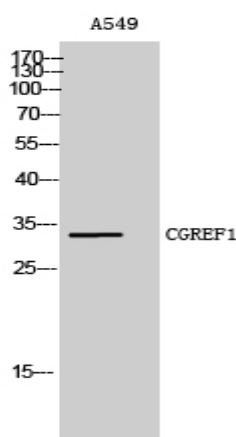
**Subcellular Location :**

Secreted .

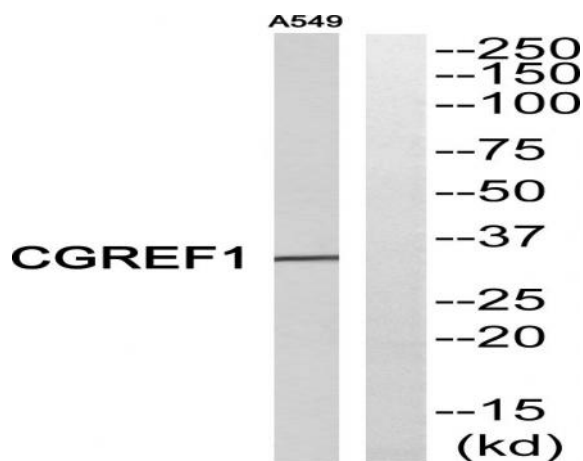
**Expression :**

Brain,Fetal brain,Testis,Thalamus,

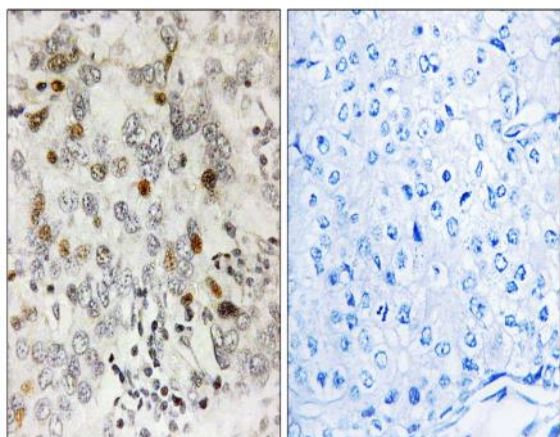
## Products Images



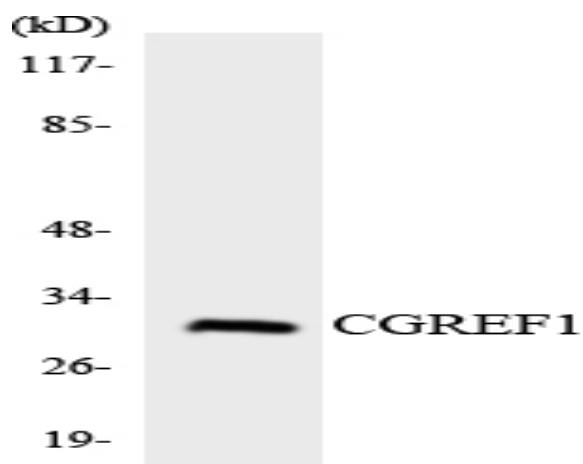
Western Blot analysis of A549 cells using CGREF1 Polyclonal Antibody



Western blot analysis of CGREF1 Antibody. The lane on the right is blocked with the CGREF1 peptide.



Immunohistochemistry analysis of paraffin-embedded human breast carcinoma, using CGREF1 Antibody. The lane on the right is blocked with the CGREF1 peptide.



Western blot analysis of the lysates from K562 cells using CGREF1 antibody.