

## CYB561D2 Polyclonal Antibody

<b>Catalog No :</b>	YT1164
<b>Reactivity :</b>	Human;Rat;Mouse;
<b>Applications :</b>	WB;ELISA
<b>Target :</b>	CYB561D2
<b>Gene Name :</b>	CYB561D2
<b>Protein Name :</b>	Cytochrome b561 domain-containing protein 2
<b>Human Gene Id :</b>	11068
<b>Human Swiss Prot No :</b>	O14569
<b>Mouse Swiss Prot No :</b>	Q9WUE3
<b>Immunogen :</b>	The antiserum was produced against synthesized peptide derived from human C56D2. AA range:55-104
<b>Specificity :</b>	CYB561D2 Polyclonal Antibody detects endogenous levels of CYB561D2 protein.
<b>Formulation :</b>	Liquid in PBS containing 50% glycerol, 0.5% BSA and 0.02% sodium azide.
<b>Source :</b>	Polyclonal, Rabbit,IgG
<b>Dilution :</b>	WB 1:500 - 1:2000. ELISA: 1:20000. Not yet tested in other applications.
<b>Purification :</b>	The antibody was affinity-purified from rabbit antiserum by affinity-chromatography using epitope-specific immunogen.
<b>Concentration :</b>	1 mg/ml
<b>Storage Stability :</b>	-15°C to -25°C/1 year(Do not lower than -25°C)
<b>Observed Band :</b>	24kD

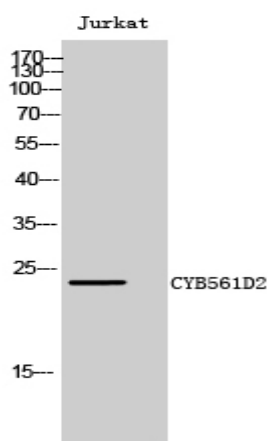
**Background :** cofactor: Binds 2 heme groups non-covalently., similarity: Contains 1 cytochrome b561 domain.,

**Function :** cofactor: Binds 2 heme groups non-covalently., similarity: Contains 1 cytochrome b561 domain.,

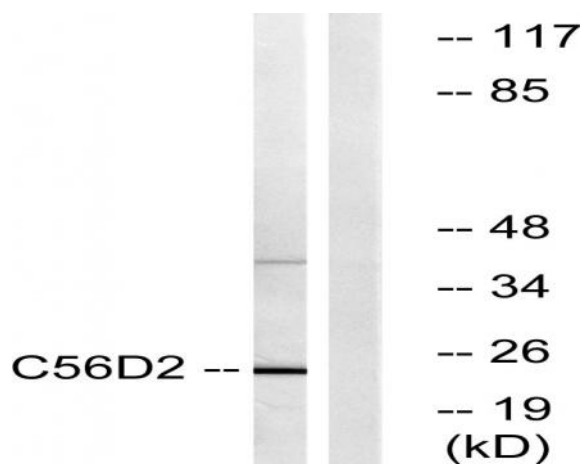
**Subcellular Location :** Endoplasmic reticulum membrane ; Multi-pass membrane protein . Cytoplasmic vesicle membrane ; Multi-pass membrane protein .

**Expression :** Pancreas,

## Products Images



Western Blot analysis of Jurkat cells using CYB561D2 Polyclonal Antibody



Western blot analysis of lysates from Jurkat cells, using C56D2 Antibody. The lane on the right is blocked with the synthesized peptide.