

Cerebellin 4 Polyclonal Antibody

Catalog No :	YT0871
Reactivity :	Human;Mouse;Monkey
Applications :	WB;IHC;IF;ELISA
Target :	Cerebellin 4
Gene Name :	CBLN4
Protein Name :	Cerebellin-4
Human Gene Id :	140689
Human Swiss Prot No :	Q9NTU7
Mouse Gene Id :	228942
Mouse Swiss Prot No :	Q8BME9
Immunogen :	The antiserum was produced against synthesized peptide derived from human CBLN4. AA range:141-190
Specificity :	Cerebellin 4 Polyclonal Antibody detects endogenous levels of Cerebellin 4 protein.
Formulation :	Liquid in PBS containing 50% glycerol, 0.5% BSA and 0.02% sodium azide.
Source :	Polyclonal, Rabbit,IgG
Dilution :	WB 1:500 - 1:2000. IHC 1:100 - 1:300. ELISA: 1:40000.. IF 1:50-200
Purification :	The antibody was affinity-purified from rabbit antiserum by affinity-chromatography using epitope-specific immunogen.
Concentration :	1 mg/ml
Storage Stability :	-15 °C to -25 °C/1 year(Do not lower than -25 °C)

Observed Band : 27kD

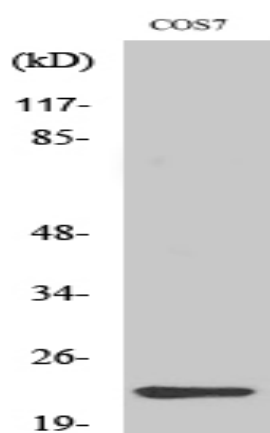
Background : This gene encodes a member of a family of small secreted proteins containing C1Q domains. Members of this family are involved in regulation of neurexin signalling during synapse development. The mouse homolog of the protein encoded by this gene competes with netrin to bind to the deleted in colorectal cancer receptor. [provided by RefSeq, Aug 2012],

Function : function:May be involved in synaptic functions in the CNS. Can enable ER export and secretion of CBLN3.,similarity:Contains 1 C1q domain.,subunit:Homo-hexamers; disulfide-linked homotrimers. The trimers are assembled via the globular C1q domains. The trimers associate via N-terminal cysteine residues to form disulfide-linked hexamers. May interact with CBLN1, CBLN2 and CBLN3.,

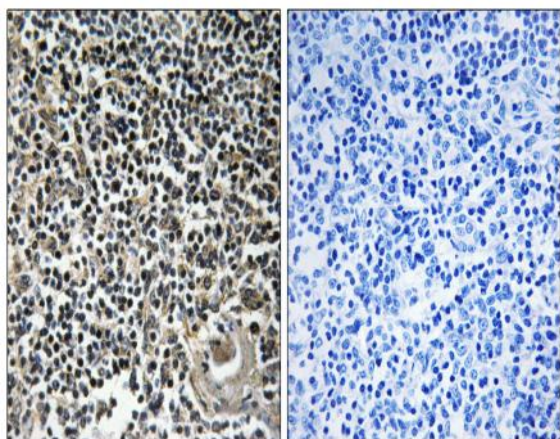
Subcellular Location : Secreted . Cell junction, synapse . Detected at GABAergic synapses. .

Expression : Brain,

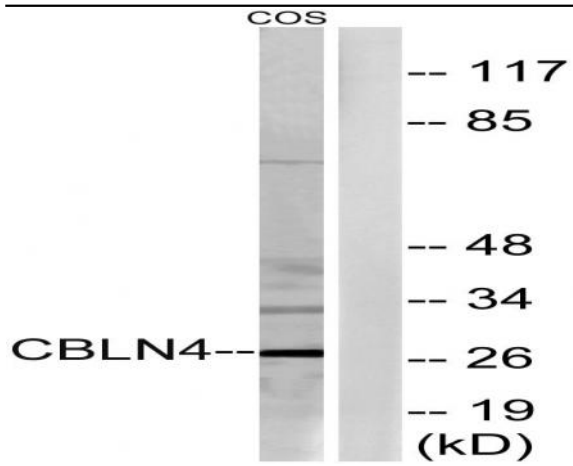
Products Images



Western Blot analysis of various cells using Cerebellin 4 Polyclonal Antibody



Immunohistochemistry analysis of paraffin-embedded human thymus gland tissue, using CBLN4 Antibody. The picture on the right is blocked with the synthesized peptide.



Western blot analysis of lysates from COS cells, using CBLN4 Antibody. The lane on the right is blocked with the synthesized peptide.