

## C-TAK1 Polyclonal Antibody

<b>Catalog No :</b>	YT1147
<b>Reactivity :</b>	Human;Mouse;Rat
<b>Applications :</b>	WB;IHC;IF;ELISA
<b>Target :</b>	C-TAK1
<b>Gene Name :</b>	MARK3
<b>Protein Name :</b>	MAP/microtubule affinity-regulating kinase 3
<b>Human Gene Id :</b>	4140
<b>Human Swiss Prot No :</b>	P27448
<b>Mouse Gene Id :</b>	17169
<b>Mouse Swiss Prot No :</b>	Q03141
<b>Rat Gene Id :</b>	170577
<b>Rat Swiss Prot No :</b>	Q8VHF0
<b>Immunogen :</b>	The antiserum was produced against synthesized peptide derived from human MARK3. AA range:1-50
<b>Specificity :</b>	C-TAK1 Polyclonal Antibody detects endogenous levels of C-TAK1 protein.
<b>Formulation :</b>	Liquid in PBS containing 50% glycerol, 0.5% BSA and 0.02% sodium azide.
<b>Source :</b>	Polyclonal, Rabbit,IgG
<b>Dilution :</b>	WB 1:500 - 1:2000. IHC 1:100 - 1:300. IF 1:200 - 1:1000. ELISA: 1:40000. Not yet tested in other applications.
<b>Purification :</b>	The antibody was affinity-purified from rabbit antiserum by affinity-chromatography using epitope-specific immunogen.

**Concentration :** 1 mg/ml

**Storage Stability :** -15°C to -25°C/1 year(Do not lower than -25°C)

**Observed Band :** 85kD

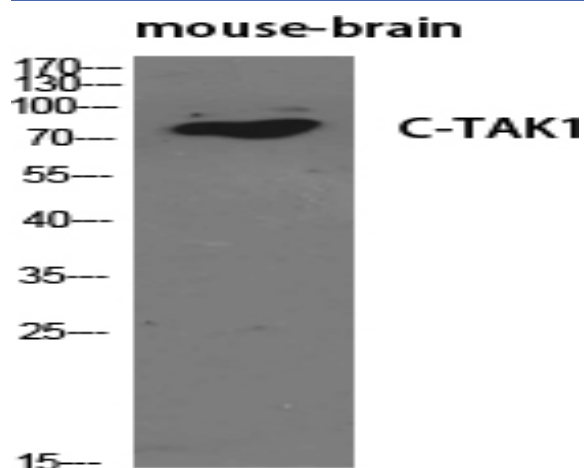
**Background :** microtubule affinity regulating kinase 3(MARK3) Homo sapiens The protein encoded by this gene is activated by phosphorylation and in turn is involved in the phosphorylation of tau proteins MAP2 and MAP4. Several transcript variants encoding different isoforms have been found for this gene. [provided by RefSeq, Oct 2011],

**Function :** catalytic activity:ATP + a protein = ADP + a phosphoprotein.,function:Involved in the specific phosphorylation of microtubule-associated proteins for tau, MAP2 and MAP4. Phosphorylates CDC25C on 'Ser-216'. ,similarity:Belongs to the protein kinase superfamily. CAMK Ser/Thr protein kinase family. MARK subfamily. ,similarity:Contains 1 KA1 (kinase-associated) domain. ,similarity:Contains 1 protein kinase domain. ,similarity:Contains 1 UBA domain. ,tissue specificity:Ubiquitous. ,

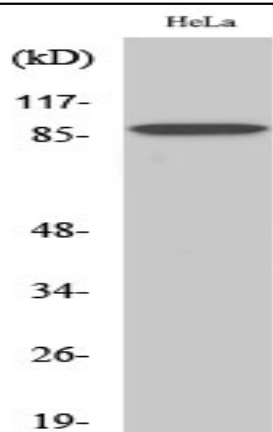
**Subcellular Location :** Cell membrane ; Peripheral membrane protein . Cell projection, dendrite . Cytoplasm .

**Expression :** Ubiquitous.

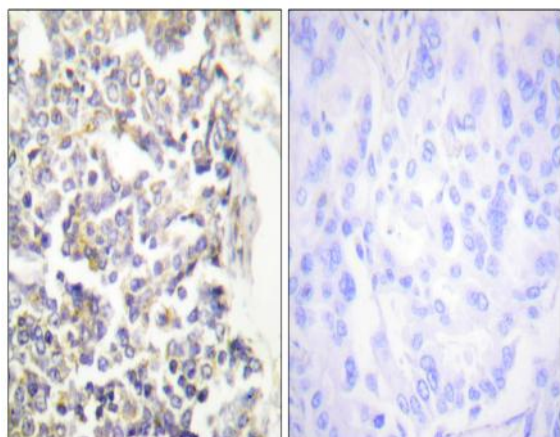
## Products Images



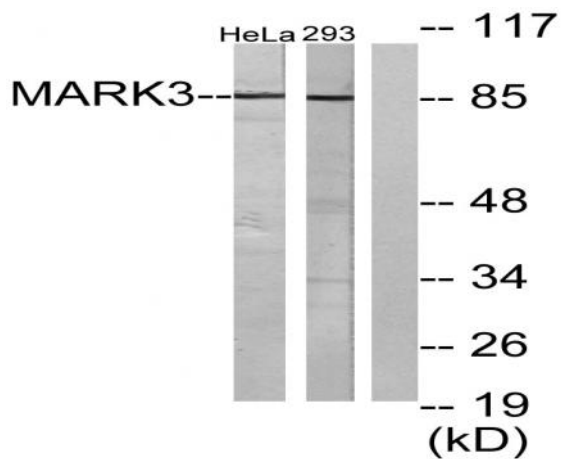
Western Blot analysis of various cells using C-TAK1 Polyclonal Antibody diluted at 1:500



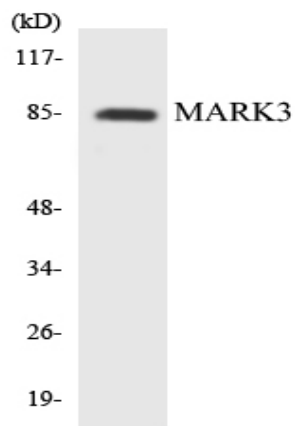
Western Blot analysis of 293 cells using C-TAK1 Polyclonal Antibody diluted at 1:500



Immunohistochemistry analysis of paraffin-embedded human lung carcinoma tissue, using MARK3 Antibody. The picture on the right is blocked with the synthesized peptide.



Western blot analysis of lysates from HeLa and 293 cells, using MARK3 Antibody. The lane on the right is blocked with the synthesized peptide.



Western blot analysis of the lysates from K562 cells using MARK3 antibody.