

CdkL4 Polyclonal Antibody

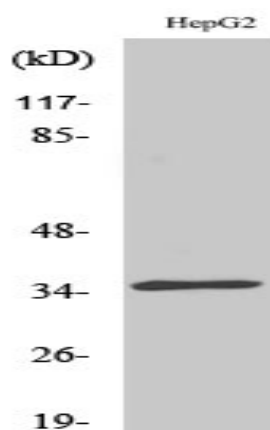
Catalog No :	YT0842
Reactivity :	Human;Mouse
Applications :	WB;IHC;IF;ELISA
Target :	CdkL4
Gene Name :	CDKL4
Protein Name :	Cyclin-dependent kinase-like 4
Human Gene Id :	344387
Human Swiss Prot No :	Q5MAI5
Mouse Swiss Prot No :	Q3TZA2
Immunogen :	The antiserum was produced against synthesized peptide derived from human CDKL4. AA range:266-315
Specificity :	CdkL4 Polyclonal Antibody detects endogenous levels of CdkL4 protein.
Formulation :	Liquid in PBS containing 50% glycerol, 0.5% BSA and 0.02% sodium azide.
Source :	Polyclonal, Rabbit,IgG
Dilution :	WB 1:500 - 1:2000. IHC 1:100 - 1:300. IF 1:200 - 1:1000. ELISA: 1:40000. Not yet tested in other applications.
Purification :	The antibody was affinity-purified from rabbit antiserum by affinity-chromatography using epitope-specific immunogen.
Concentration :	1 mg/ml
Storage Stability :	-15°C to -25°C/1 year(Do not lower than -25°C)
Observed Band :	36kD

Background : catalytic activity:ATP + a protein = ADP + a phosphoprotein.,domain:The [NKR]KIAxRE motif seems to be a cyclin-binding region.,similarity:Belongs to the protein kinase superfamily. CMGC Ser/Thr protein kinase family. CDC2/CDKX subfamily.,similarity:Contains 1 protein kinase domain.,

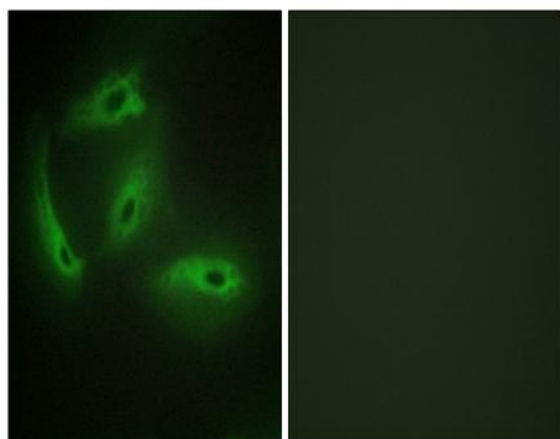
Function : catalytic activity:ATP + a protein = ADP + a phosphoprotein.,domain:The [NKR]KIAxRE motif seems to be a cyclin-binding region.,similarity:Belongs to the protein kinase superfamily. CMGC Ser/Thr protein kinase family. CDC2/CDKX subfamily.,similarity:Contains 1 protein kinase domain.,

Subcellular Location : Cytoplasm .

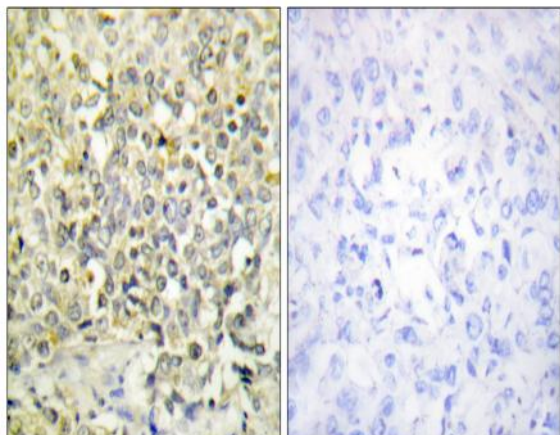
Products Images



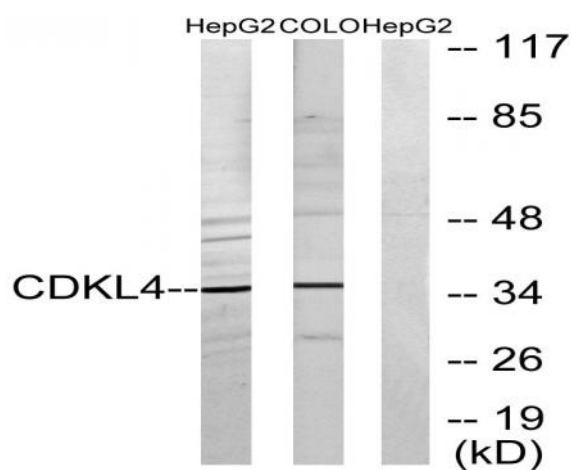
Western Blot analysis of various cells using CdkL4 Polyclonal Antibody diluted at 1:500



Immunofluorescence analysis of HeLa cells, using CDKL4 Antibody. The picture on the right is blocked with the synthesized peptide.



Immunohistochemistry analysis of paraffin-embedded human lung carcinoma tissue, using CDKL4 Antibody. The picture on the right is blocked with the synthesized peptide.



Western blot analysis of lysates from HepG2 and COLO205 cells, using CDKL4 Antibody. The lane on the right is blocked with the synthesized peptide.