

CRP1 Polyclonal Antibody

Catalog No :	YT1119
Reactivity :	Human;Mouse;Rat
Applications :	WB;IHC;IF;ELISA
Target :	CRP1
Gene Name :	CSRP1
Protein Name :	Cysteine and glycine-rich protein 1
Human Gene Id :	1465
Human Swiss Prot No :	P21291
Mouse Gene Id :	13007
Mouse Swiss Prot No :	P97315
Rat Gene Id :	29276
Rat Swiss Prot No :	P47875
Immunogen :	The antiserum was produced against synthesized peptide derived from human CRP1. AA range:51-100
Specificity :	CRP1 Polyclonal Antibody detects endogenous levels of CRP1 protein.
Formulation :	Liquid in PBS containing 50% glycerol, 0.5% BSA and 0.02% sodium azide.
Source :	Polyclonal, Rabbit,IgG
Dilution :	WB 1:500 - 1:2000. IHC 1:100 - 1:300. ELISA: 1:20000.. IF 1:50-200
Purification :	The antibody was affinity-purified from rabbit antiserum by affinity-chromatography using epitope-specific immunogen.

Concentration : 1 mg/ml

Storage Stability : -15°C to -25°C/1 year(Do not lower than -25°C)

Observed Band : 22kD

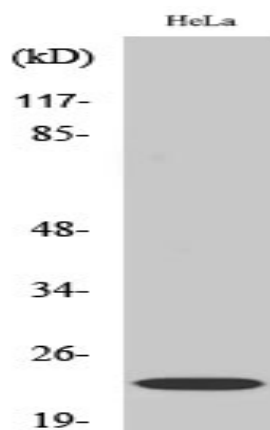
Background : This gene encodes a member of the cysteine-rich protein (CSRP) family. This gene family includes a group of LIM domain proteins, which may be involved in regulatory processes important for development and cellular differentiation. The LIM/double zinc-finger motif found in this gene product occurs in proteins with critical functions in gene regulation, cell growth, and somatic differentiation. Alternatively spliced transcript variants have been described. [provided by RefSeq, Aug 2010],

Function : function:Could play a role in neuronal development.,similarity:Contains 1 LIM zinc-binding domain.,similarity:Contains 2 LIM zinc-binding domains.,subunit:Monomer.,

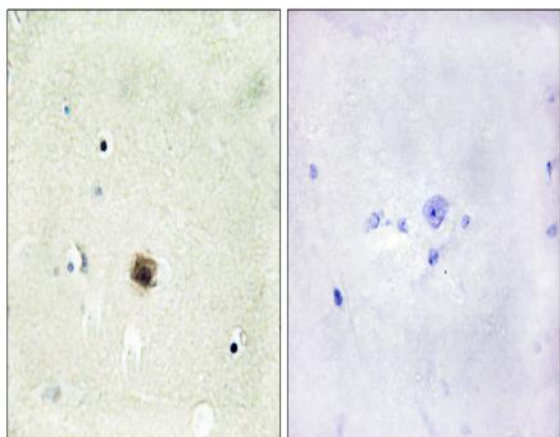
Subcellular Location : Nucleus .

Expression : Amygdala,Brain,Cervix,Epithelium,Pancreas,Term placenta,Trachea,Ute

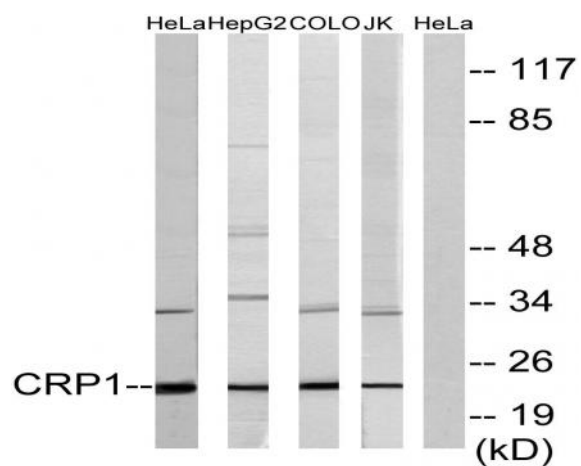
Products Images



Western Blot analysis of various cells using CRP1 Polyclonal Antibody diluted at 1:1000 cells nucleus extracted by Minute TM Cytoplasmic and Nuclear Fractionation kit (SC-003, Inventbiotech, MN, USA).



Immunohistochemistry analysis of paraffin-embedded human brain tissue, using CRP1 Antibody. The picture on the right is blocked with the synthesized peptide.



Western blot analysis of lysates from HeLa, HepG2, COLO, and Jurkat cells, using CRP1 Antibody. The lane on the right is blocked with the synthesized peptide.