

cPLA2- γ Polyclonal Antibody

Catalog No :	YT1085
Reactivity :	Human;Rat;Mouse;
Applications :	WB;ELISA
Target :	cPLA2- γ
Fields :	>>Glycerophospholipid metabolism;>>Ether lipid metabolism;>>Arachidonic acid metabolism;>>Linoleic acid metabolism;>>alpha-Linolenic acid metabolism;>>Metabolic pathways;>>MAPK signaling pathway;>>Ras signaling pathway;>>Phospholipase D signaling pathway;>>Necroptosis;>>Vascular smooth muscle contraction;>>VEGF signaling pathway;>>Platelet activation;>>Fc epsilon RI signaling pathway;>>Fc gamma R-mediated phagocytosis;>>Glutamatergic synapse;>>Serotonergic synapse;>>Long-term depression;>>Inflammatory mediator regulation of TRP channels;>>GnRH signaling pathway;>>Ovarian steroidogenesis;>>Oxytocin signaling pathway;>>Choline metabolism in cancer
Gene Name :	PLA2G4C
Protein Name :	Cytosolic phospholipase A2 gamma
Human Gene Id :	8605
Human Swiss Prot No :	Q9UP65
Immunogen :	The antiserum was produced against synthesized peptide derived from human PLA2G4C. AA range:301-350
Specificity :	cPLA2- γ Polyclonal Antibody detects endogenous levels of cPLA2- γ protein.
Formulation :	Liquid in PBS containing 50% glycerol, 0.5% BSA and 0.02% sodium azide.
Source :	Polyclonal, Rabbit,IgG
Dilution :	WB 1:500 - 1:2000. ELISA: 1:20000. Not yet tested in other applications.
Purification :	The antibody was affinity-purified from rabbit antiserum by affinity-

chromatography using epitope-specific immunogen.

Concentration : 1 mg/ml

Storage Stability : -15°C to -25°C/1 year(Do not lower than -25°C)

Observed Band : 70kD

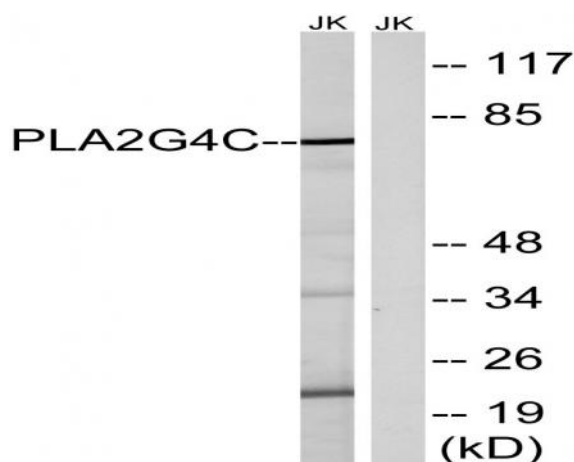
Background : This gene encodes a protein which is a member of the phospholipase A2 enzyme family which hydrolyzes glycerophospholipids to produce free fatty acids and lysophospholipids, both of which serve as precursors in the production of signaling molecules. The encoded protein has been shown to be a calcium-independent and membrane bound enzyme. Multiple transcript variants encoding different isoforms have been found for this gene. [provided by RefSeq, Apr 2009],

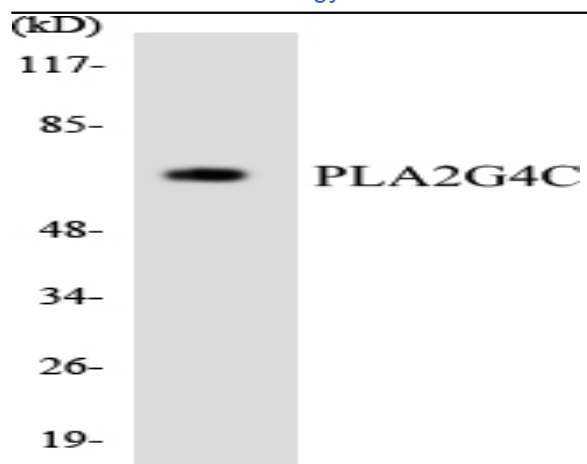
Function : catalytic activity:Phosphatidylcholine + H(2)O = 1-acylglycerophosphocholine + a carboxylate.,enzyme regulation:Not regulated by calcium.,function:Has a preference for arachidonic acid at the sn-2 position of phosphatidylcholine as compared with palmitic acid.,similarity:Contains 1 PLA2c domain.,tissue specificity:Highly expressed in heart and skeletal muscle.,

Subcellular Location : Cell membrane ; Lipid-anchor . Endoplasmic reticulum membrane ; Lipid-anchor. Mitochondrion membrane ; Lipid-anchor. Lipid droplet . Translocates from endoplasmic reticulum to lipid droplets in response to oleate. .

Expression : Highly expressed in heart and skeletal muscle.

Products Images





Western blot analysis of the lysates from HeLa cells using PLA2G4C antibody.