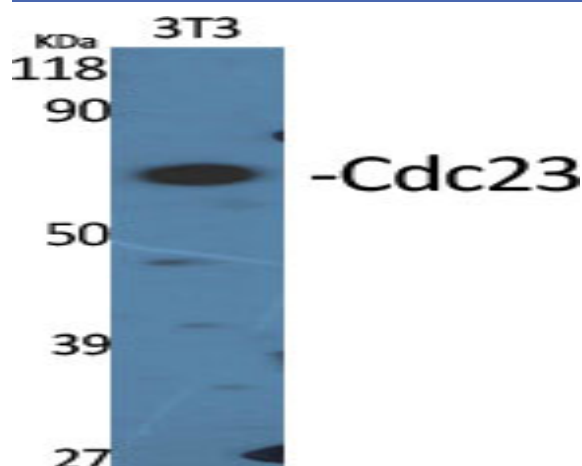


Cdc23 Polyclonal Antibody

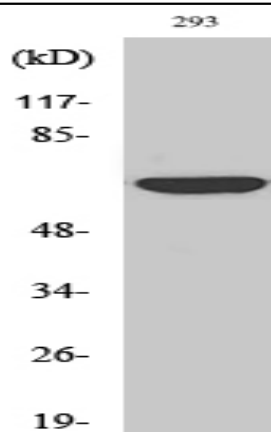
Catalog No :	YT0792
Reactivity :	Human;Mouse;Monkey
Applications :	WB;ELISA
Target :	Cdc23
Fields :	>>Cell cycle;>>Oocyte meiosis;>>Ubiquitin mediated proteolysis;>>Progesterone-mediated oocyte maturation;>>Human T-cell leukemia virus 1 infection
Gene Name :	CDC23
Protein Name :	Cell division cycle protein 23 homolog
Human Gene Id :	8697
Human Swiss Prot No :	Q9UJX2
Mouse Gene Id :	52563
Mouse Swiss Prot No :	Q8BGZ4
Immunogen :	The antiserum was produced against synthesized peptide derived from human APC8. AA range:251-300
Specificity :	Cdc23 Polyclonal Antibody detects endogenous levels of Cdc23 protein.
Formulation :	Liquid in PBS containing 50% glycerol, 0.5% BSA and 0.02% sodium azide.
Source :	Polyclonal, Rabbit,IgG
Dilution :	WB 1:500 - 1:2000. ELISA: 1:20000. Not yet tested in other applications.
Purification :	The antibody was affinity-purified from rabbit antiserum by affinity-chromatography using epitope-specific immunogen.

Concentration :	1 mg/ml
Storage Stability :	-15°C to -25°C/1 year(Do not lower than -25°C)
Observed Band :	69kD
Cell Pathway :	Cell_Cycle_G1S;Cell_Cycle_G2M_DNA;Oocyte meiosis;Ubiquitin mediated proteolysis;Progesterone-mediated oocyte maturation;
Background :	The protein encoded by this gene shares strong similarity with <i>Saccharomyces cerevisiae</i> Cdc23, a protein essential for cell cycle progression through the G2/M transition. This protein is a component of anaphase-promoting complex (APC), which is composed of eight protein subunits and highly conserved in eukaryotic cells. APC catalyzes the formation of cyclin B-ubiquitin conjugate that is responsible for the ubiquitin-mediated proteolysis of B-type cyclins. This protein and 3 other members of the APC complex contain the TPR (tetratricopeptide repeat), a protein domain important for protein-protein interaction. [provided by RefSeq, Jul 2008],
Function :	function:Component of the anaphase promoting complex/cyclosome (APC/C), a cell cycle-regulated ubiquitin ligase that controls progression through mitosis and the G1 phase of the cell cycle.,pathway:Protein modification; protein ubiquitination.,PTM:Phosphorylated. Phosphorylation on Thr-556 occurs specifically during mitosis.,similarity:Belongs to the APC8/CDC23 family.,similarity:Contains 9 TPR repeats.,subunit:The APC/C is composed of at least 11 subunits.,
Subcellular Location :	intracellular,nucleoplasm,anaphase-promoting complex,cytosol,
Expression :	Bone marrow,Brain,Duodenum,Epithelium,Pancreas,Placenta,

Products Images



Western Blot analysis of various cells using Cdc23 Polyclonal Antibody diluted at 1:2000



Western Blot analysis of COS7 cells using Cdc23 Polyclonal Antibody diluted at 1:2000