

COX19 Polyclonal Antibody

Catalog No :	YT1072
Reactivity :	Human;Mouse
Applications :	IHC;IF;ELISA
Target :	COX19
Fields :	>>Thermogenesis
Gene Name :	COX19
Protein Name :	Cytochrome c oxidase assembly protein COX19
Human Gene Id :	90639
Human Swiss Prot No :	Q49B96
Mouse Gene Id :	68033
Mouse Swiss Prot No :	Q8K0C8
Immunogen :	The antiserum was produced against synthesized peptide derived from human COX19. AA range:10-59
Specificity :	COX19 Polyclonal Antibody detects endogenous levels of COX19 protein.
Formulation :	Liquid in PBS containing 50% glycerol, 0.5% BSA and 0.02% sodium azide.
Source :	Polyclonal, Rabbit,IgG
Dilution :	IHC 1:100 - 1:300. ELISA: 1:20000.. IF 1:50-200
Purification :	The antibody was affinity-purified from rabbit antiserum by affinity-chromatography using epitope-specific immunogen.
Concentration :	1 mg/ml

Storage Stability : -15°C to -25°C/1 year(Do not lower than -25°C)

Molecularweight : 10kD

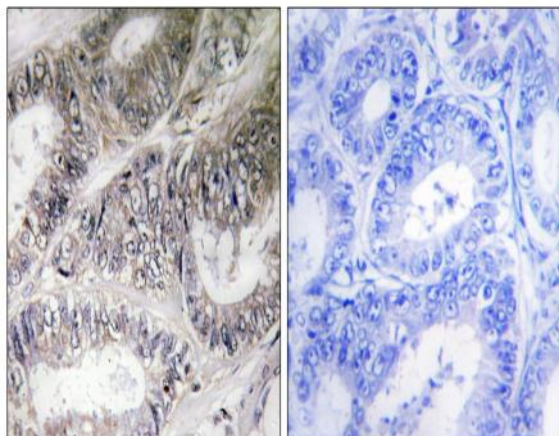
Background : COX19 encodes a cytochrome c oxidase (COX)-assembly protein. The S. cerevisiae Cox19 protein may play a role in metal transport to the mitochondrial intermembrane space and assembly of complex IV of the mitochondrial respiratory chain (Sacconi et al., 2005 [PubMed 16212937]).[supplied by OMIM, Mar 2008],

Function : function:May be required for the assembly of mitochondrial cytochrome c oxidase.,similarity:Belongs to the COX19 family.,similarity:Contains 1 CHCH domain.,tissue specificity:Ubiquitously expressed. Highly expressed in skeletal muscle.,

Subcellular Location : Cytoplasm, cytosol . Mitochondrion intermembrane space . Mitochondrion . Partitions between mitochondria and the cytosol in a copper-dependent manner. Enriched in the cytosol when intracellular copper concentrations are elevated. .

Expression : Ubiquitously expressed. Highly expressed in skeletal muscle.

Products Images



Immunohistochemistry analysis of paraffin-embedded human colon carcinoma tissue, using COX19 Antibody. The picture on the right is blocked with the synthesized peptide.