

## Connexin-45 Polyclonal Antibody

<b>Catalog No :</b>	YT1052
<b>Reactivity :</b>	Human;Mouse;Rat
<b>Applications :</b>	WB;IHC;IF;ELISA
<b>Target :</b>	Connexin-45
<b>Gene Name :</b>	GJC1
<b>Protein Name :</b>	Gap junction gamma-1 protein
<b>Human Gene Id :</b>	10052
<b>Human Swiss Prot No :</b>	P36383
<b>Mouse Gene Id :</b>	14615
<b>Mouse Swiss Prot No :</b>	P28229
<b>Rat Gene Id :</b>	266706
<b>Rat Swiss Prot No :</b>	A4GG66
<b>Immunogen :</b>	The antiserum was produced against synthesized peptide derived from human Connexin-45. AA range:312-361
<b>Specificity :</b>	Connexin-45 Polyclonal Antibody detects endogenous levels of Connexin-45 protein.
<b>Formulation :</b>	Liquid in PBS containing 50% glycerol, 0.5% BSA and 0.02% sodium azide.
<b>Source :</b>	Polyclonal, Rabbit,IgG
<b>Dilution :</b>	WB 1:500 - 1:2000. IHC 1:100 - 1:300. ELISA: 1:40000.. IF 1:50-200
<b>Purification :</b>	The antibody was affinity-purified from rabbit antiserum by affinity-chromatography using epitope-specific immunogen.

**Concentration :** 1 mg/ml

**Storage Stability :** -15°C to -25°C/1 year(Do not lower than -25°C)

**Observed Band :** 45kD

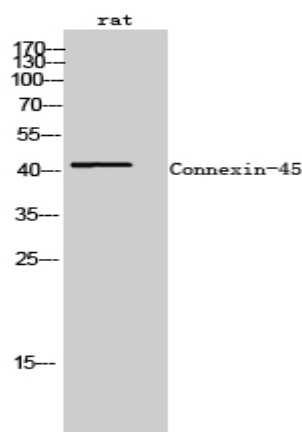
**Background :** This gene is a member of the connexin gene family. The encoded protein is a component of gap junctions, which are composed of arrays of intercellular channels that provide a route for the diffusion of low molecular weight materials from cell to cell. Alternatively spliced transcript variants encoding the same isoform have been described. [provided by RefSeq, Jul 2008],

**Function :** function:One gap junction consists of a cluster of closely packed pairs of transmembrane channels, the connexons, through which materials of low MW diffuse from one cell to a neighboring cell.,similarity:Belongs to the connexin family. Gamma-type subfamily.,subunit:A connexon is composed of a hexamer of connexins.,

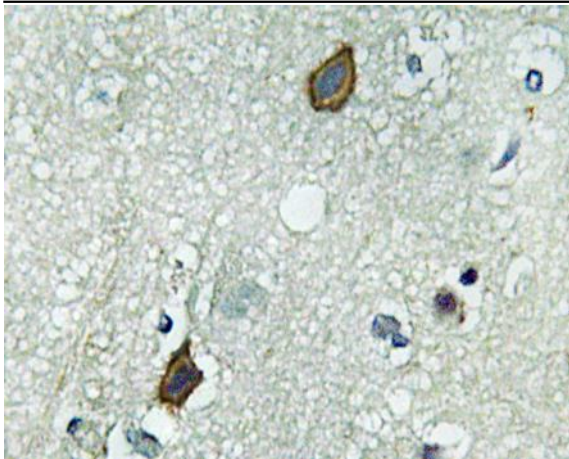
**Subcellular Location :** Cell membrane; Multi-pass membrane protein. Cell junction, gap junction.

**Expression :** Testis,Uterus,

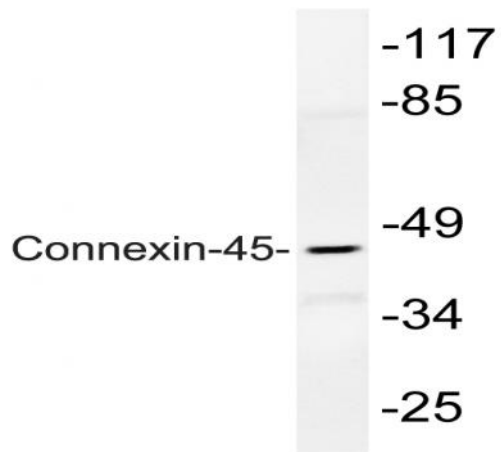
## Products Images



Western Blot analysis of rat cells using Connexin-45 Polyclonal Antibody



Immunohistochemistry analysis of Connexin-45 antibody in paraffin-embedded human brain tissue.



Western blot analysis of lysate from rat heart, using Connexin-45 antibody.