

COL20A1 Polyclonal Antibody

Catalog No :	YT1031
Reactivity :	Human;Mouse;Rat
Applications :	WB;IHC;IF;ELISA
Target :	COL20A1
Fields :	>>Protein digestion and absorption
Gene Name :	COL20A1
Protein Name :	Collagen alpha-1(XX) chain
Human Gene Id :	57642/1301/1289
Human Swiss Prot No :	Q9P218
Mouse Gene Id :	73368
Mouse Swiss Prot No :	Q923P0
Immunogen :	The antiserum was produced against synthesized peptide derived from human Collagen XX alpha1. AA range:1151-1200
Specificity :	COL20A1 Polyclonal Antibody detects endogenous levels of COL20A1 protein.
Formulation :	Liquid in PBS containing 50% glycerol, 0.5% BSA and 0.02% sodium azide.
Source :	Polyclonal, Rabbit,IgG
Dilution :	WB 1:500 - 1:2000. IHC 1:100 - 1:300. IF 1:200 - 1:1000. ELISA: 1:20000. Not yet tested in other applications.
Purification :	The antibody was affinity-purified from rabbit antiserum by affinity-chromatography using epitope-specific immunogen.
Concentration :	1 mg/ml

Storage Stability : -15°C to -25°C/1 year(Do not lower than -25°C)

Observed Band : 140kD

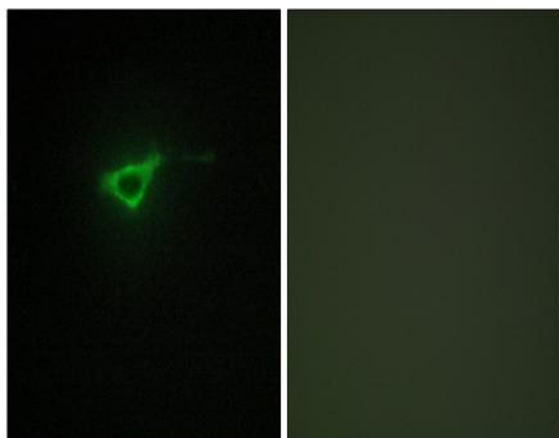
Background : COL20A1 (Collagen Type XX Alpha 1) is a Protein Coding gene. Among its related pathways are Collagen biosynthesis and modifying enzymes and ERK Signaling. An important paralog of this gene is MATN1.

Function : function:Probable collagen protein.,similarity:Contains 1 collagen-like domain.,similarity:Contains 1 TSP N-terminal (TSPN) domain.,similarity:Contains 1 VWFA domain.,similarity:Contains 6 fibronectin type-III domains.,tissue specificity:High expression in heart, lung, liver, skeletal muscle, kidney, pancreas, spleen, testis, ovary, subthalamic nucleus and fetal liver. Weak expression in other tissues tested.,

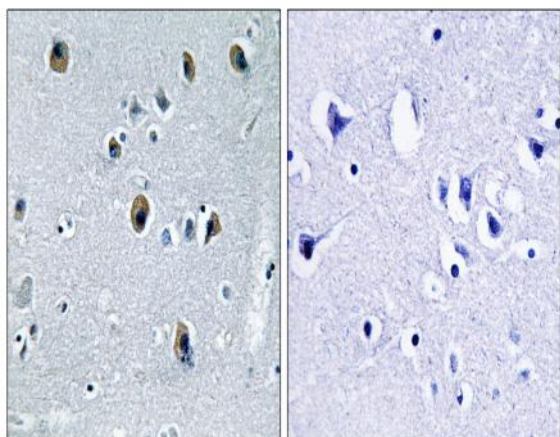
Subcellular Location : Secreted, extracellular space .

Expression : High expression in heart, lung, liver, skeletal muscle, kidney, pancreas, spleen, testis, ovary, subthalamic nucleus and fetal liver. Weak expression in other tissues tested.

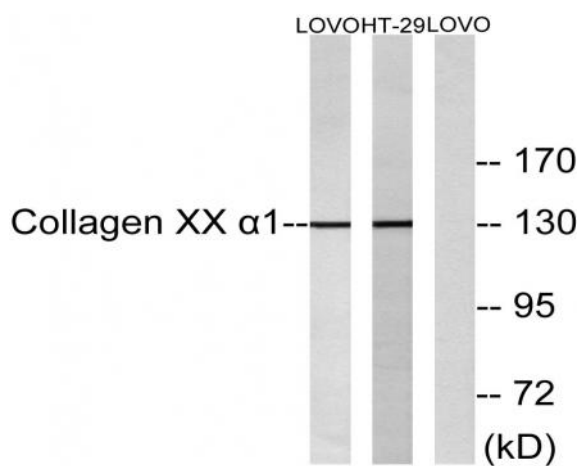
Products Images



Immunofluorescence analysis of NIH/3T3 cells, using Collagen XX alpha1 Antibody. The picture on the right is blocked with the synthesized peptide.



Immunohistochemistry analysis of paraffin-embedded human brain tissue, using Collagen XX alpha1 Antibody. The picture on the right is blocked with the synthesized peptide.



Western blot analysis of lysates from LOVO and HT-19 cells, using Collagen XX alpha1 Antibody. The lane on the right is blocked with the synthesized peptide.