

## CCS Polyclonal Antibody

<b>Catalog No :</b>	YT0715
<b>Reactivity :</b>	Human;Rat;Mouse;
<b>Applications :</b>	WB;IHC;IF;ELISA
<b>Target :</b>	CCS
<b>Fields :</b>	>>Amyotrophic lateral sclerosis;>>Pathways of neurodegeneration - multiple diseases
<b>Gene Name :</b>	CCS
<b>Protein Name :</b>	Copper chaperone for superoxide dismutase
<b>Human Gene Id :</b>	9973
<b>Human Swiss Prot No :</b>	O14618
<b>Mouse Swiss Prot No :</b>	Q9WU84
<b>Immunogen :</b>	The antiserum was produced against synthesized peptide derived from human CCS. AA range:225-274
<b>Specificity :</b>	CCS Polyclonal Antibody detects endogenous levels of CCS protein.
<b>Formulation :</b>	Liquid in PBS containing 50% glycerol, 0.5% BSA and 0.02% sodium azide.
<b>Source :</b>	Polyclonal, Rabbit,IgG
<b>Dilution :</b>	WB 1:500 - 1:2000. IHC 1:100 - 1:300. ELISA: 1:10000.. IF 1:50-200
<b>Purification :</b>	The antibody was affinity-purified from rabbit antiserum by affinity-chromatography using epitope-specific immunogen.
<b>Concentration :</b>	1 mg/ml
<b>Storage Stability :</b>	-15°C to -25°C/1 year(Do not lower than -25°C)

**Observed Band :** 32kD

**Cell Pathway :** Amyotrophic lateral sclerosis (ALS);

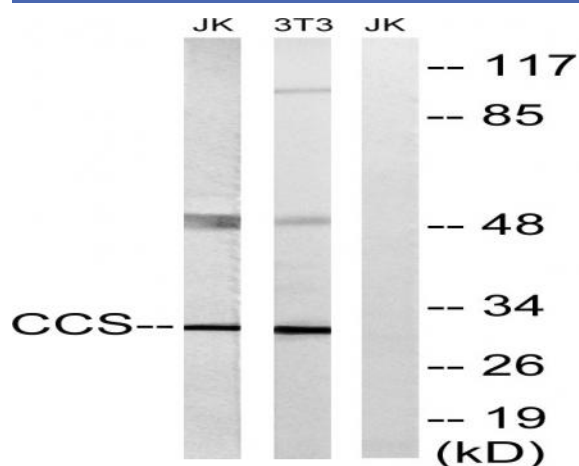
**Background :** Copper chaperone for superoxide dismutase specifically delivers Cu to copper/zinc superoxide dismutase and may activate copper/zinc superoxide dismutase through direct insertion of the Cu cofactor. [provided by RefSeq, Jul 2008],

**Function :** cofactor: Binds 1 zinc ion per subunit., cofactor: Binds 2 copper ions per subunit., function: Delivers copper to copper zinc superoxide dismutase (SOD1)., similarity: Contains 1 HMA domain., similarity: In the C-terminal section; belongs to the Cu-Zn superoxide dismutase family., subunit: Homodimer, and heterodimer with SOD1., tissue specificity: Ubiquitous.,

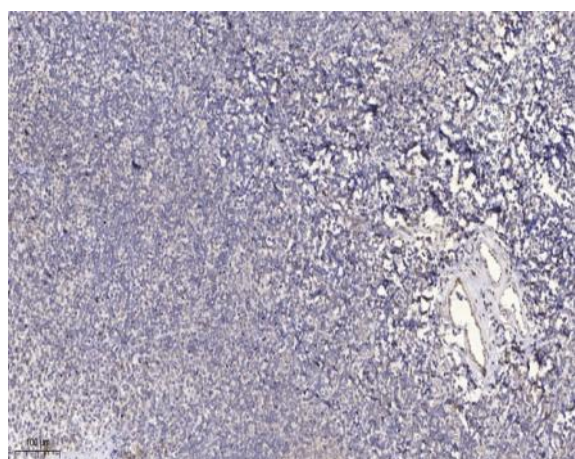
**Subcellular Location :** Cytoplasm .

**Expression :** Ubiquitous.

## Products Images



Western blot analysis of lysates from NIH/3T3 and Jurkat cells, using CCS Antibody. The lane on the right is blocked with the synthesized peptide.



Immunohistochemical analysis of paraffin-embedded human tonsil. 1, Antibody was diluted at 1:200(4° overnight). 2, Tris-EDTA, pH 9.0 was used for antigen retrieval. 3, Secondary antibody was diluted at 1:200(room temperature, 30min).