

## c-Myc Polyclonal Antibody

|                              |   |
|------------------------------|---|
| <b>Catalog No :</b>          | YT0991  |
| <b>Reactivity :</b>          | Human;Mouse;Rat   |
| <b>Applications :</b>        | WB;IHC;IF;ELISA   |
| <b>Target :</b>              | c-Myc   |
| <b>Fields :</b>              | >>MAPK signaling pathway;>>ErbB signaling pathway;>>Cell cycle;>>PI3K-Akt signaling pathway;>>Cellular senescence;>>Wnt signaling pathway;>>TGF-beta signaling pathway;>>Hippo signaling pathway;>>Signaling pathways regulating pluripotency of stem cells;>>JAK-STAT signaling pathway;>>Thyroid hormone signaling pathway;>>Salmonella infection;>>Hepatitis C;>>Hepatitis B;>>Human cytomegalovirus infection;>>Human T-cell leukemia virus 1 infection;>>Kaposi sarcoma-associated herpesvirus infection;>>Epstein-Barr virus infection;>>Pathways in cancer;>>Transcriptional misregulation in cancer;>>Proteoglycans in cancer;>>MicroRNAs in cancer;>>Chemical carcinogenesis - receptor activation;>>Colorectal cancer;>>Endometrial cancer;>>Thyroid cancer;>>Bladder cancer;>>Chronic myeloid leukemia;>>Acute myeloid leukemia;>>Small cell lung cancer;>>Breast cancer;>>Hepatocellular carcinoma;>>Gastric cancer;>>Central carbon metabolism in cancer |
| <b>Gene Name :</b>           | MYC   |
| <b>Protein Name :</b>        | Myc proto-oncogene protein  |
| <b>Human Gene Id :</b>       | 4609  |
| <b>Human Swiss Prot No :</b> | P01106  |
| <b>Mouse Gene Id :</b>       | 17869   |
| <b>Mouse Swiss Prot No :</b> | P01108  |
| <b>Rat Gene Id :</b>         | 24577   |
| <b>Rat Swiss Prot No :</b>   | P09416  |

|                            |   |
|----------------------------|---|
| <b>Immunogen :</b>         | The antiserum was produced against synthesized peptide derived from human MYC. AA range:386-435   |
| <b>Specificity :</b>       | c-Myc Polyclonal Antibody detects endogenous levels of c-Myc protein.   |
| <b>Formulation :</b>       | Liquid in PBS containing 50% glycerol, 0.5% BSA and 0.02% sodium azide.   |
| <b>Source :</b>            | Polyclonal, Rabbit,IgG  |
| <b>Dilution :</b>          | WB 1:500 - 1:2000. IHC 1:100 - 1:300. IF 1:200 - 1:1000. ELISA: 1:40000. Not yet tested in other applications.  |
| <b>Purification :</b>      | The antibody was affinity-purified from rabbit antiserum by affinity-chromatography using epitope-specific immunogen.   |
| <b>Concentration :</b>     | 1 mg/ml   |
| <b>Storage Stability :</b> | -15°C to -25°C/1 year(Do not lower than -25°C)  |
| <b>Observed Band :</b>     | 50,(also ~60KD in some samples)   |
| <b>Cell Pathway :</b>      | Stem cell pathway; Cell_Cycle_G1S;Cell_Cycle_G2M_DNA; WNT;WNT-T CELL;β-Catenin; ErbB/HER; MAPK_ERK_Growth;MAPK_G_Protein; PI3K/Akt; Protein_Acetylation   |
| <b>Background :</b>        | The protein encoded by this gene is a multifunctional, nuclear phosphoprotein that plays a role in cell cycle progression, apoptosis and cellular transformation. It functions as a transcription factor that regulates transcription of specific target genes. Mutations, overexpression, rearrangement and translocation of this gene have been associated with a variety of hematopoietic tumors, leukemias and lymphomas, including Burkitt lymphoma. There is evidence to show that alternative translation initiations from an upstream, in-frame non-AUG (CUG) and a downstream AUG start site result in the production of two isoforms with distinct N-termini. The synthesis of non-AUG initiated protein is suppressed in Burkitt's lymphomas, suggesting its importance in the normal function of this gene. [provided by RefSeq, Jul 2008], |
| <b>Function :</b>          | disease:A chromosomal aberration involving MYC may be a cause of a form of B-cell chronic lymphocytic leukemia. Translocation t(8;12)(q24;q22) with BTG1.,disease:Overexpression of MYC is implicated in the etiology of a variety of hematopoietic tumors.,function:Participates in the regulation of gene transcription. Binds DNA both in a non-specific manner and also specifically to recognizes the core sequence 5'-CAC[GA]TG-3'. Seems to activate the transcription of growth-related genes.,online information:Myc entry,PTM:Phosphorylated by PRKDC.,similarity:Contains 1 basic helix-loop-helix (bHLH) domain.,subunit:Efficient DNA binding requires dimerization with another bHLH  |

protein. Binds DNA as a heterodimer with MAX. Interacts with TAF1C and SPAG9. Interacts with PARP10. Interacts with KDM5A and KDM5B.,

**Subcellular Location :**

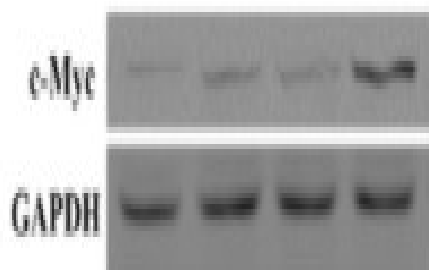
Nucleus, nucleoplasm . Nucleus, nucleolus .

**Expression :**

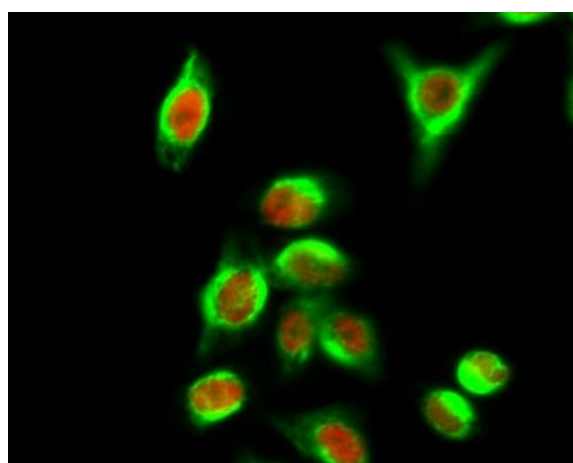
Cervix,Epithelium,Leukemia,Placenta,Promyelocytic I

## Products Images

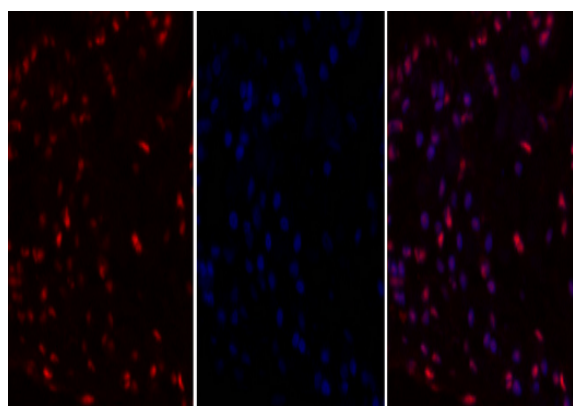
D



Ye, Zhengmeng, et al. "In Utero Exposure to Fine Particulate Matter Causes Hypertension Due to Impaired Renal Dopamine D1 Receptor in Offspring." *Cellular Physiology and Biochemistry* 46.1 (2018): 148-159.



Immunofluorescence analysis of HeLa cell. 1,c-Myc Polyclonal Antibody(red) was diluted at 1:200(4° overnight). CY5 Monoclonal Antibody(4B10)(green) was diluted at 1:200(4° overnight). 2, Goat Anti Rabbit Alexa Fluor 594 Catalog:RS3611 was diluted at 1:1000(room temperature, 50min). Goat Anti Mouse Alexa Fluor 488 Catalog:RS3208 was diluted at 1:1000(room temperature, 50min).

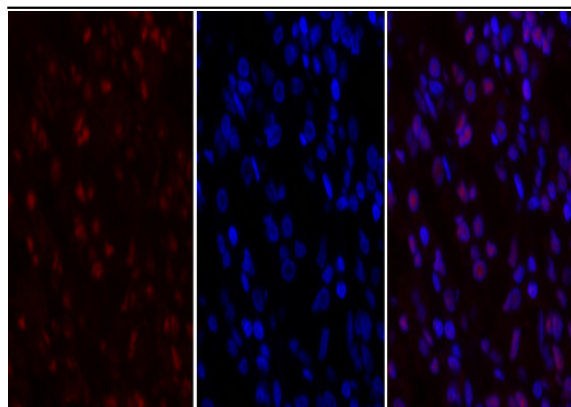


Immunofluorescence analysis of human-lung tissue. 1,c-Myc Polyclonal Antibody(red) was diluted at 1:200(4° C,overnight). 2, Cy3 labeled Secondary antibody was diluted at 1:300(room temperature, 50min).3, Picture B: DAPI(blue) 10min. Picture A:Target. Picture B: DAPI. Picture C: merge of A+B

A

B

C

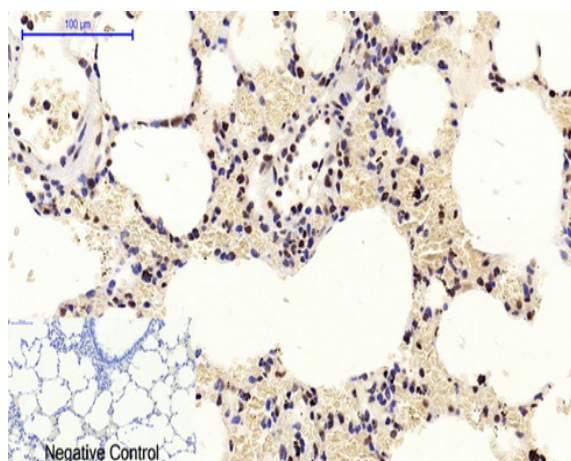


A

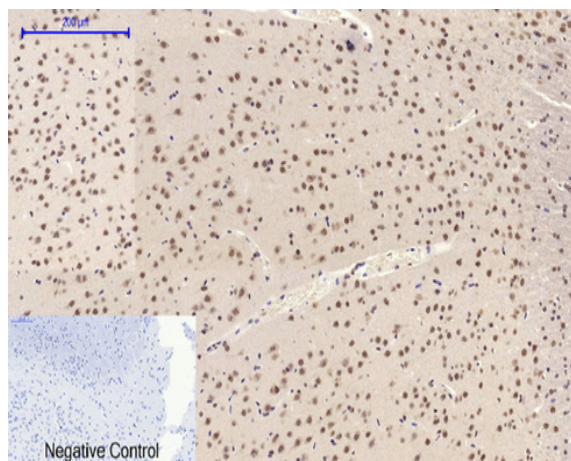
B

C

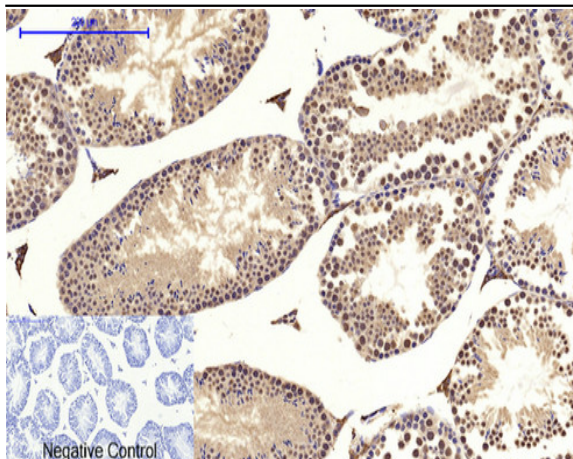
Immunofluorescence analysis of human-stomach tissue. 1,c-Myc Polyclonal Antibody(red) was diluted at 1:200(4 °C,overnight). 2, Cy3 labeled Secondary antibody was diluted at 1:300(room temperature, 50min).3, Picture B: DAPI(blue) 10min. Picture A:Target. Picture B: DAPI. Picture C: merge of A+B



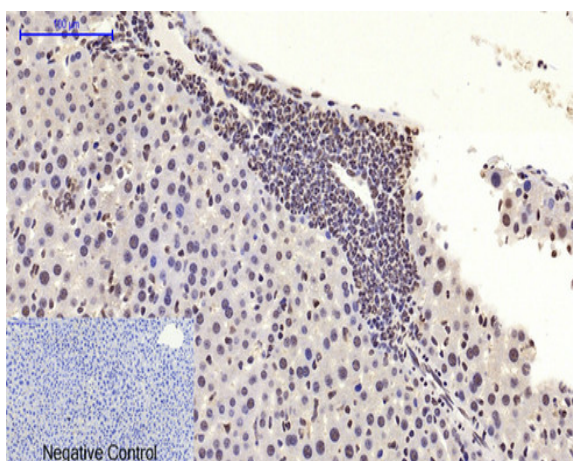
Immunohistochemical analysis of paraffin-embedded Rat-lung tissue. 1,c-Myc Polyclonal Antibody was diluted at 1:200(4 °C,overnight). 2, Sodium citrate pH 6.0 was used for antibody retrieval(>98 °C,20min). 3,Secondary antibody was diluted at 1:200(room temperature, 30min). Negative control was used by secondary antibody only.



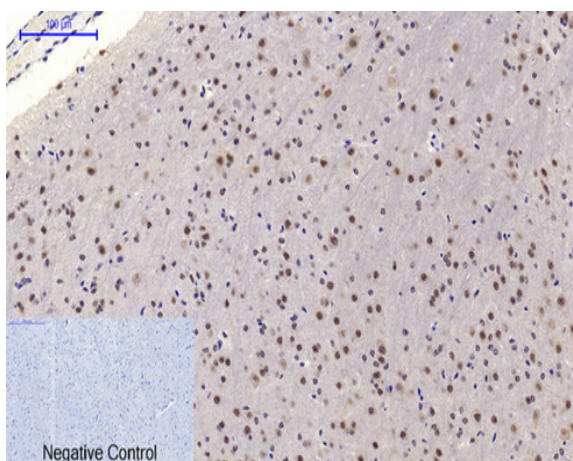
Immunohistochemical analysis of paraffin-embedded Rat-brain tissue. 1,c-Myc Polyclonal Antibody was diluted at 1:200(4 °C,overnight). 2, Sodium citrate pH 6.0 was used for antibody retrieval(>98 °C,20min). 3,Secondary antibody was diluted at 1:200(room temperature, 30min). Negative control was used by secondary antibody only.



Immunohistochemical analysis of paraffin-embedded Mouse-testis tissue. 1,c-Myc Polyclonal Antibody was diluted at 1:200(4 °C,overnight). 2, Sodium citrate pH 6.0 was used for antibody retrieval(>98 °C,20min). 3,Secondary antibody was diluted at 1:200(room tempeRature, 30min). Negative control was used by secondary antibody only.

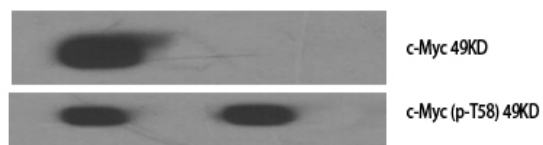


Immunohistochemical analysis of paraffin-embedded Mouse-liver tissue. 1,c-Myc Polyclonal Antibody was diluted at 1:200(4 °C,overnight). 2, Sodium citrate pH 6.0 was used for antibody retrieval(>98 °C,20min). 3,Secondary antibody was diluted at 1:200(room tempeRature, 30min). Negative control was used by secondary antibody only.

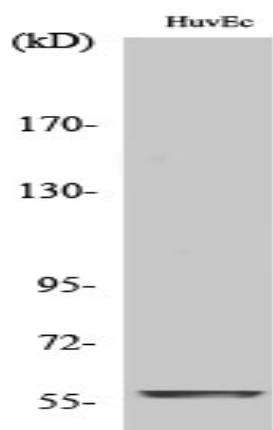


Immunohistochemical analysis of paraffin-embedded Mouse-brain tissue. 1,c-Myc Polyclonal Antibody was diluted at 1:200(4 °C,overnight). 2, Sodium citrate pH 6.0 was used for antibody retrieval(>98 °C,20min). 3,Secondary antibody was diluted at 1:200(room tempeRature, 30min). Negative control was used by secondary antibody only.

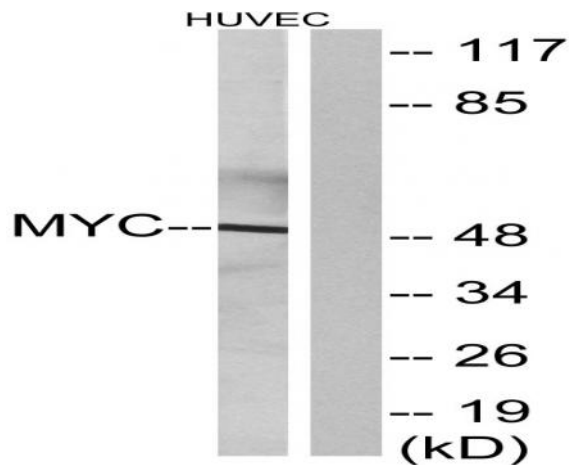
Western Blot analysis of various cells using c-Myc Polyclonal Antibody diluted at 1:1000



|   |   |                       |
|---|---|-----------------------|
| - | + | - phospho-peptide     |
| - | - | + non-phospho-peptide |



Western Blot analysis of HuvEc cells using c-Myc Polyclonal Antibody diluted at 1:1000



Western blot analysis of lysates from HUVEC cells, using MYC Antibody. The lane on the right is blocked with the synthesized peptide.